

**Brammer
Buck &
Hickman**

Powered by
RUBIX



Return to Work Safely

Products, Services and Solutions
to Help You Safely Return to Work



> no one
knows PPE
like us



Brammer Buck & Hickman – here to help you return to work safely. Adjusting to the new normal can be a complex route to navigate. We are faced daily with new challenges related to protection, safety and hygiene in order to protect our colleagues and workplace.

We've put together a guide to help you make choices to keep your people safe.

PPE specialists – *and more*

WE'RE HERE TO HELP

Working safely requires detailed planning to cover:

- Safeguarding employees health and wellbeing
- Ensuring social distancing is achievable
- Restarting production to meet your customer demand
- Working with customers and supply chains with new safety procedures

PUTTING YOUR EMPLOYEES FIRST

The health and safety of employees must take priority, and in developing a plan and undertaking the relevant risk assessments the following should be considered:

- SOCIAL DISTANCING MEASURES, flooring, matting, signs and screens
- Suitable HANDWASHING STATIONS and freely available HAND SANTISERS
- PPE – masks and visors, and if appropriate the correct gloves and aprons
- CLEANING EQUIPMENT with the right chemicals for each application

PPE AND PROTECTION EXPERTS

Our range of products help you quickly address these concerns and get your people working safely, efficiently and productively. Our Pre-packed PPE Kits contain everything you need – turn to page 6 to find out more, and how to order yours today.

Brammer Buck & Hickman has a specialist team to help you every step of the way, and our local branch support is at the heart of your business. Not just the parts, but the people too.

Social distancing in the workplace – the principles



Workplaces need to avoid crowding and minimise opportunities for the virus to spread. Brammer Buck & Hickman has put together a range of products that can help you keep people safe.

Government Advice	Products	See pages
All staff should have access to appropriate PPE	PPE Pre-packed Kits PPE Face masks	Page 6 & 7 Page 4 to 5
Staff should be reminded to wash their hands regularly using soap and water for 20 seconds.	Handwash, Cleaning and Sanitisers	Pages 17 to 43
Where facilities to wash hands are not available, hand sanitiser should be used.	Hand Sanitiser Cleaning and Sanitisers	Page 17 to 43
In washrooms and at hand wash stations, disposable paper towels should be used in preference to hand driers or cloth towels.	Disposable paper towels and dispensers	Page 41 to 43
Workplaces should provide additional pop-up handwashing stations or facilities if possible.	Portable handwash stations	Page 28 to 40
Where it is possible to remain metres apart, use floor markings to mark the distance.	Loose lay floor mats Floor marking kits	Page 58 to 60 Pages 61 & 62
Use signage to direct movement and maintain distance. Notices promoting hand hygiene and social distancing should be placed visibly.	Business signage	Page 65
Place plexiglass barriers at points of regular interaction as an additional element of protection for workers and customers.	Plexiglass and other barriers	Page 57

Contents

Face Mask Applications and Face Fit Testing	p. 4 to 5
Pre-packed PPE Kits	p. 6 & 7
Face Masks	p. 8 to 9
Gloves	p. 10
Coveralls	p. 11 to 13
3M Litecom Headsets	p. 14
Sanitising Range	p. 18 to 25
Portable Handwash Stations	p. 28 to 40
Paper Towels and Dispensers	p. 41 to 43

Kärcher Cleaners	p. 44 to 49
Foggers	p. 50 to 55
Numatic Misting Disinfection	p. 56
Social Distancing Screens	p. 57
Social Distancing Signs & Mats	p. 58 to 60
Social Distancing Stencil Kits	p. 61 to 62
Social Distancing Seat Markers	p. 63 to 64
Signage	p. 65

Face Mask Applications and Face Fit Testing

Since the Coronavirus pandemic many people are reaching for Personal Protective Equipment, PPE, and in particular face masks as a form of protection. There are many questions and often conflicting advice.

We always recommend a full risk assessment should be carried out in the workplace in line with HSE guidelines.



FFP2 ▲

Next is FFP2 and these offer more protection than FFP1, and protect against materials at concentrations up to 12x OEL or 10x APF. They are the European equivalent of the N95 respirator masks used in the USA and meet the guidance from the World Health Organisation (WHO).

MEDICAL MASKS

Medical face masks are recommended as a means of source control, i.e. they decrease the transmission of a virus by preventing the spread of respiratory droplets produced by coughing or sneezing.

There are two types of medical face masks: Type I and Type II according to their Bacterial Filtration Efficiency (BFE). The BFE determines the amount of infective agent retained by the facemask and therefore directly relates to the number of bacteria released through the mask and into the environment.

Type II masks are further divided according to their Splash Resistance Pressure which determines the mask's resistance level to potentially contaminated fluid splashes.

A Type IIR mask is splash resistant, the letter 'R' signifies splash resistance.

A Type II mask is not splash resistant. Splash resistance is required in clinical settings to protect the wearer against splashes of blood or bodily fluids.

RESPIRATOR MASKS

Respirator masks (which means they are made of a fabric designed to filter the air or impurities) are based on a grading system do indicate how much protection they offer the user.



FFP1 ▲

A FFP1 mask it is the first rung on the ladder, which protects against materials in concentrations up to 4x OEL or 4x APF (assigned protection factor).



FFP3 ▲

These masks offer the highest level of protection and protect against materials in concentrations up to 50x OEL or 20x APF. This is substantially higher than FFP1 and they can block both liquid and solid aerosols.

Current NHS guidelines stipulate FFP3 face masks for virus and bacterial infection control when the contagion is spread through coughing and sneezing (such as with the Coronavirus). They are also often used by healthcare professionals when handling hazardous pharmaceutical chemicals.

VALVED OR UNVALVED MASKS?

As well as the level of protection that each kind of mask offers, there are also some design elements that you may want to consider.

UNVALVED MASKS

Unvalved masks mean that the filtration system is built into the fabric, and therefore can be lightweight and discreet. This can make the mask more comfortable to wear as they are non-bulky and don't feel heavy on the face.

VALVED MASKS

The alternative to an unvalved mask is a valved one. Although this can make the mask slightly bulkier and heavier, it allows air to be let out of the mask. Valved masks are typically less sweaty and stuffy, which can make them more breathable and often more comfortable to wear.

FACE FIT TESTING

With all the masks referenced above the wearer must be clean shaven to ensure they get the maximum seal possible around the face.

With any FFP mask, Half Mask or Full-Face Mask the wearer should have been face fit tested to the mask as per the HSE guidelines.

Training on how to fit the mask correctly should be performed either with by a supply chain partner, the manufacturer or face fit testing independent companies operate.

The face fit testing can be done by two methods, Qualitative or Quantitative. The Quantitative (PortaCount) method can be used to fit test all types of tight-fitting masks including disposable, half and full face masks.



The Quantitative tests give an objective assessment of facial fit and provide a direct numerical result called a Fit Factor.

For further information please access the HSE website
<https://www.hse.gov.uk/respiratory-protective-equipment/fit-testing-basics.htm>

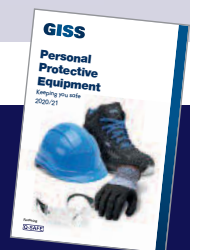


REUSABLE HALF MASK or FULL FACE MASK ▲

Another option to consider is a reusable mask, and these masks are used with a P3 filter fitted. These masks can be used more than once, and you could get up to 4 weeks use out of one set of filters. This of course would depend on many factors such as concentration levels of the contaminate and work rate. With this type of mask you would also need to keep a record which includes, identification of the mask, daily checks, maintenance and critically when the filters have been changed to compile with the HSE regulations.

For your own digital copy of the GISS PPE catalogue, visit

http://flipbook.brammer.biz/Giss_2020-2021/mobile/index.html#p=6



COVID-19 PPE Kits

PPE PREMIUM KIT

£59.99

- Suitable for front-line medical and care workers, or those working in high risk environments



DESCRIPTION	QUANTITY
REUSABLE HALF-MASK	1 Mask
REUSABLE FILTERS	1 Pair
CLEAR POLYCARBONATE SAFETY GLASSES	1
DISPOSABLE SURGICAL MASK	3 x Masks
SAFETY GOGGLES	1
DISPOSABLE GLOVES	10 pairs
ANTI SPLASH FACE SHIELD	1
DISPOSABLE APRON	5
FOAMING HAND SANITISER	2 x 50ml
ANTIBACTERIAL HANDWASH	1 x 500ml
ANTIBACTERIAL UNIVERSAL WIPES	1 pack x 72

ORDER CODE: 217A6072

PPE STANDARD KIT

£38.99

- Suitable for logistics and deliveries, or those working in support industries to medical facilities



DESCRIPTION	QUANTITY
DISPOSABLE FFP2 FACE MASK	3 x Masks
DISPOSABLE SURGICAL MASK	3 x Masks
CLEAR POLYCARBONATE SAFETY GLASSES	1
DISPOSABLE GLOVES	10 pairs
ANTIBACTERIAL UNIVERSAL WIPES	1 pack x 72
ANTIBACTERIAL HANDWASH	1 x 500ml
FOAMING HAND SANITISER	2 x 50ml

ORDER CODE: 217A6068

Brammer Buck & Hickman are offering a new range of pre-packed PPE Kits with all the products you need – easy and accessible to keep your people safe. All kits are supplied with a reusable drawstring tote bag except the premium pack which comes in a 38 litre cotton bag. Technical Sheets and Material Safety Data Sheets can be downloaded [here](#).

**PPE
ESSENTIAL
KIT**

£19.99

- Recommended for all industries, especially customer-facing role

DESCRIPTION	QUANTITY
DISPOSABLE SURGICAL MASK	5 x Masks
CLEAR POLYCARBONATE SAFETY GLASSES	1 pair
DISPOSABLE GLOVES	10 pairs
ANTIBACTERIAL UNIVERSAL WIPES	1 pack x 72
ANTIBACTERIAL HANDWASH	1 x 500ml
FOAMING HAND SANITISER	1 x 50ml

ORDER CODE: 217A6065



**PPE
STARTER
KIT**

£12.99

- Suitable for all industries

DESCRIPTION	QUANTITY
DISPOSABLE SURGICAL MASK	3 x Masks
DISPOSABLE GLOVES	10 pairs
ANTIBACTERIAL UNIVERSAL WIPES	1 pack x 72
FOAMING HAND SANITISER	1 x 50ml

ORDER CODE: 217A6064



> PPE Essentials – Masks



OTHER MASKS

GISS-GL001A-PK50

FFP2 NR Unvalved Fold Flat Disposable Mask – Pack of 50



SO SAFE SS4020 Unvalved FFP2 Disposable Mask Box of 20



FFP2 Masks	
K8 CODE	DESCRIPTION
217A1899	GISS GL001A FFP2 NR UNVALVED FOLD FLAT DISPOSABLE MASK PACK OF 50
217A3966	SO SAFE SS4020 UNVALVED FFP2 DISPOSABLE MASK BOX OF 20

> PPE Essentials – Coveralls, Visors, Goggles



VISORS/FACE SHIELDS

Face screen to protect against liquid splash

- Good anti fog performance
- Lightweight, ergonomic design, comfortable to wear – Please note this is not EN166 rated

K8 CODE	DESCRIPTION
216A7489	GISS 886037 ANTI FOG ANTI SPLASH FACE SHIELD



SAFETY GOGGLES

G13 is a pair of safety goggles accessible to all which is adapted to the most common industrial risks

- Simple and economic, G13 sealed goggles fit to all and can be worn over glasses
- Blue translucent sealed frame
- Anti-fog coating and adjustable strap
- Fits over prescription glasses
- EN166 Rated

K8 CODE	DESCRIPTION
216A9751	BOLLE G13 SAFETY GOGGLE

> PPE Essentials – Gloves



GISS Vinyl Nitrile Examination Glove

K8 CODE	DESCRIPTION
222A0543	GISS 886526 VINYL NITRILE BLUE EXAMINATION GLOVE SIZE M BOX OF 100
222A0544	GISS 886527 VINYL NITRILE BLUE EXAMINATION GLOVE SIZE L BOX OF 100



GISS Disposable G-Nitrile Powderfree Glove

K8 CODE	DESCRIPTION
200A3732	GISS 844950 DISPOSABLE G-NITRILE POWDERFREE GLOVES BLU S7 PACK OF 100
200A3733	GISS 844951 DISPOSABLE G-NITRILE POWDERFREE GLOVES BLU S8 PACK OF 100
200A3734	GISS 844952 DISPOSABLE G-NITRILE POWDERFREE GLOVES BLU S9 PACK OF 100
200A3730	GISS 844953 DISPOSABLE G-NITRILE POWDERFREE GLOVES BLU S10 PACK OF 100



TEGERA 846 Extended Cuff Disposable Glove

K8 CODE	DESCRIPTION
169A8572	TEGERA 846 EXTENDED CUFF DISPOSABLE GLOVES BLUE SIZE 8 PK50
169A8033	TEGERA 846 EXTENDED CUFF DISPOSABLE GLOVES BLUE SIZE 9 PK50
170A2175	TEGERA 846 EXTENDED CUFF DISPOSABLE GLOVES BLUE SIZE 10 PK50



Aurelia Powderfree Disposable Glove – Clear

REV7 CODE	K8 CODE	DESCRIPTION
AURELIA-38226-BX100	222A5621	AURELIA 38226 DELIGHT P/FREE VINYL DISPOSABLE GLOVES CLEAR SM BOX 100
AURELIA-38227-BX100	222A5624	AURELIA 38227 DELIGHT P/FREE VINYL DISPOSABLE GLOVES CLEAR MED BOX 100
AURELIA-38228-BX100	222A5625	AURELIA 38228 DELIGHT P/FREE VINYL DISPOSABLE GLOVES CLEAR LGE BOX 100
AURELIA-38239-BX100	222A5626	AURELIA 38239 DELIGHT P/FREE VINYL DISPOSABLE GLOVES CLEAR XL BOX 100

> Alphatec 2000 Ts PLUS – Model 111 Coverall

The coveralls have a 3-piece hood, single zipper with re-sealable storm flap, thumb loops and chin strap. Elasticated waist, tunnelled elasticated wrists, hood and ankles.

- Proven protective barrier to low concentration liquid chemicals, liquid and particulate biological hazards
- Comfortable to wear featuring moisture vapor permeable fabric (“breathable”) to help reduce the risk of heat stress
- Optimized body fit, improving wearer comfort and safety
- Ultra-Low Linting, reduced risk of contamination in critical areas
- Protection against many risks including protection against infective agents under the EN14126 standard
- Ideal for Life Sciences, Automotive, Metal Fabrication, Food Processing, Chemical



Coveralls are certified to:

- Type 4/5/6
- EN1149-5
- EN1073-2
- EN14126

Order Codes

K8 CODE	DESCRIPTION
218A2145	ALPHATEC WH20T-00111-02 2000 TS PLUS - MODEL 111 COVERALL WHITE SMALL
218A2146	ALPHATEC WH20T-00111-03 2000 TS PLUS - MODEL 111 COVERALL WHITE MEDIUM
218A2147	ALPHATEC WH20T-00111-04 2000 TS PLUS - MODEL 111 COVERALL WHITE LARGE
218A2149	ALPHATEC WH20T-00111-05 2000 TS PLUS - MODEL 111 COVERALL WHITE XL
218A2150	ALPHATEC WH20T-00111-06 2000 TS PLUS - MODEL 111 COVERALL WHITE 2XL

Ansell

> DuPont™ Tyvek® 500 Xpert Hooded Coverall

DuPont™ Tyvek® 500 Xpert. Hooded coverall. Ergonomic-protective design. Stitched external seams. Elasticated wrists, ankles and face. Elasticated waist (glued-in). Tyvek® zipper and flap. White.

- Tyvek® 500 coveralls are suitable for applications such as pharmaceutical handling, chemical processing, automatic spray painting, maintenance and many others
- Certified according to Regulation (EU) 2016/425
- Chemical protective clothing, Category III, Type 5-B and 6-B
- EN 14126 (barrier to infective agents), EN 1073-2 (protection against radioactive contamination)
- Antistatic treatment (EN 1149-5) – on both sides
- Stitched external seams
- Very low inward leakage thanks to optimised design
- Tyvek® auto-lock zipper and zipper flap for increased protection

Packed 100 per box, individually packed/100 per box, 4 units of 25 (EcoPack).



Order Codes

K8 CODE	DESCRIPTION
323654	TYVEK D14663953 HOODED SUIT 500 CLASSIC XPRT WHITE SIZE S
323655	TYVEK D14663967 HOODED SUIT 500 CLASSIC XPRT WHITE SIZE M
323656	TYVEK D14663977 HOODED SUIT 500 CLASSIC XPRT WHITE SIZE L
323657	TYVEK D14663986 HOODED SUIT 500 CLASSIC XPRT WHITE SIZE XL
328048	TYVEK D14663997 HOODED SUIT 500 CLASSIC XPRT WHITE SIZE 2XL

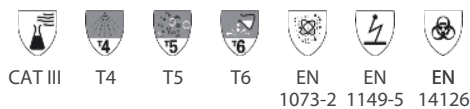


> DuPont™ Tyvek® 600 Plus Hooded Coverall

DuPont™ Tyvek® 600 Plus. Hooded coverall. Stitched and over-taped seams. Thumb loops. Tunnelled elastication at wrists, ankles and face. Elasticated waist (glued-in). Tyvek® zipper. Self-adhesive zipper and chin flap. White.

- Certified according to Regulation (EU) 2016/425
- Chemical protective clothing, Category III, Type 4-B, 5-B and 6-B
- EN 14126 (barrier to infective agents)
- Antistatic treatment (EN 1149-5) – on both sides
- Stitched and over-taped seams for protection and strength
- Tyvek® zipper and zipper flap for enhanced protection

Packed 100 per box, individually packed.



Order Codes

K8 CODE	DESCRIPTION
80183326	TYVEK CLASSIC PLUS WHITE TYPE 4/5/6 SIZE SMALL
80174475	TYVEK D13395307 CHA5A COVERALL C/W 3 PIECE HOOD (MEDIUM)
80174478	TYVEK D13395299 CHA5A COVERALL C/W 3 PIECE HOOD (LARGE)
80174479	TYVEK D13395284 CHA5A COVERALL C/W 3 PIECE HOOD (EXTRA LARGE)
80183327	TYVEK CLASSIC PLUS WHITE TYPE 4/5/6 SIZE 2XL



3M™ PELTOR™ LiteCom Headsets



Maintain production and communication at distance.

The 3M™ PELTOR™ LiteCom Headset series are developed for all environments where high safety must be combined with communication. Industrial environments, construction sites, agriculture and forestry are a few examples.

- Hands-free communication (Vox) allows you to speak through radio without pressing any button
- External microphones allow for talking and hearing warnings without removing headset



3M™ PELTOR™ LiteCom

- Hearing protector (SNR : 32dB)
- Pre-programmed analog two-way radio integrated
- 8 channels in the PMR 446MHz band
- 38 subchannels
- Range of up to 3km depending on conditions
- Voice operated transmission (VOX)
- Auto power off function
- Battery status indication
- Voice guided menu system



3M™ PELTOR™ WS™ LiteCom Plus

- Hearing protector
 - Built-in two-way radio communication
 - Connect different devices (radio, mobile phone) via Bluetooth® Multi-Point
 - 16 channels in the PMR 446 MHz band and 121 subchannels
 - IP54 certified
 - Range of up to 3km depending on conditions
 - Level dependent technology for situational awareness
 - A separate audio input
- enables connecting equipment such as mobile phones or external two-way radios
- Voice operated transmission (VOX)
 - Auto power off function
 - Voice guided menu system
 - Noise cancelling waterproof microphone (IP68)
- CONNECTS WITH**
- Bluetooth compatible devices
 - Two-way radio (via flex cable or Bluetooth®)



3M™ PELTOR™ WS™ LiteCom Pro III

- Pre-programmed analog two-way radio integrated
 - Connect different devices (radio, mobile phone) via Bluetooth® Multi-Point
 - 16 channels in the PMR 446 MHz band and 121 subchannels
 - P54 certified
 - Range of up to 3km depending on conditions
 - Level dependent technology for situational awareness
- A separate audio input enables connecting equipment such as mobile phones or external two-way radios
- Voice operated transmission (VOX)
 - Auto power off function
 - Voice guided menu system
 - Noise cancelling waterproof microphone (IP68)
- Connects with**
- Two-way radio (via flex cable)

Order Codes

K8 CODE	DESCRIPTION
80133086	3M PELTOR LITECOM EAR DEFENDERS WITH COMMS RADIO SNR32
216A7650	3M PELTOR WS LITECOM PLUS COMMS HEADSET
2518962	3M PELTOR WS LITECOM PRO III COMMS HEADBAND



Invend™

automatic dispensing at its best

We provide a full PPE vending solution ensuring your people can access the right PPE at all times

Permanently stocked with your most in-demand PPE and industrial consumables, Brammer Buck & Hickman's Invend™ industrial vending machines provide 24/7 line-side access to the products your team needs to get the job done. No fuss, no waiting and no need to replenish – we keep track of everything and keep your Invend™ machine fully stocked for you.

Of course, Invend™ is completely tailored to your needs. We help you select your stock from our comprehensive range of PPE and industrial consumables and work with you to create a machine and product profile that's exactly right for your business.

Once operational, Brammer Buck & Hickman is automatically notified when machine stock is running low. We'll then deliver the necessary replenishments ourselves, from one of our national distribution centres, within a day.

Invend™ takes care of everything for you

We'll help you choose the PPE and industrial consumables that go into your Invend™ machine and the levels of stock you carry, simply pick the items that your operation uses the most. We'll fill your machine, set it up, create users and employee access via unique PIN codes and you're ready to go. Full visibility, full control.

Simple process, exceptional benefits

Invend™ brings convenient controlled access to PPE and industrial supplies while an automated process allows fast, efficient replenishment – and all the reporting you need to keep you firmly in control.



Choose Invend™ and benefit from a constant availability of the right PPE for your people, as well as reduced inventory costs and improved productivity.

Products are available when and where you need them with no time wasted visiting stores to restock

With Invend™ there's no need to carry the cost of inventory you only pay for the items you use, along with a small monthly service fee

Reduced stock-outs, better stock control, no more stockpiling

Product consumption is reduced by up to 40% by controlling the use of industrial consumables

Supplies shift to one supplier so there's less time and money spent negotiating multiple contracts and supplies

Your whole inventory and entire management system is condensed down into one machine

Comprehensive usage reports ensure greater traceability of your consumables and create greater accountability by employees

Only controlled and approved PPE equipment is available on the shop floor

Full audit trails of issued stock



Experience Invend™ through our national demonstration vehicles

See first-hand how Invend™ can revolutionise your business. A visit from a Brammer Buck & Hickman Invend™ demonstration vehicle allows you to fully experience our unique machinery and software using live equipment.

This hands-on demonstration provides the opportunity for staff from all functions to review and evaluate the benefits of having Invend™ line-side at your plant and provides a great opportunity for your team to identify suitable vending items that will save you money and downtime.

Find out more about Invend™ today – contact our team on 0870 240 2100 or email us at vms@bbh-rubix.com

> Invend™ Machine Cleaning Solutions

Coronavirus can transfer from people to surfaces. It can be passed on to others who touch the same surfaces.

Keeping your workplace clean and frequent handwashing reduces the potential for coronavirus to spread. We've developed a range of products to help you keep your Invend™ machines clean and Covid-secure and to get your people working safely, efficiently and productively.



ARROW SANIFOAM 400ml

Aerosol is a foaming bactericidal cleaner designed to clean and sanitise surfaces. Sanifoam's foam action improves cling on vertical surfaces and acts as a visual indicator ensuring even coverage.

- Convenient ready to use aerosol cleaner.
- Foaming action clings to vertical surfaces and provides clear, visual indication that surfaces have been treated.
- Controlled collapse of foam allows easy wipe and rinse.
- Un-fragranced to reduce the risk of surface taint.
- Contains a broad spectrum biocide.



WORKLINE-CBL150 Blue Roll

Workline 2 ply blue centrefeed rolls are perfect as a general tissue wipe, they're strong and absorbent, offering great soak-up properties to make drying and cleaning jobs fast and fuss-free in any professional setting.



WORKLINE WIPES 4 AntiVirus Hand and Surface Wipe

Sheet Size: 270 x 200mm, 100 sheets per pack

Tested against Coronavirus Approved to European standards: EN1276, EN1650, EN14476

Cleaning your vending machines

- Using Sanifoam hold can 6-9 inches away from area to be cleaned, spray evenly over the exterior of the machine (excluding the touch screen display)
- Allow a short contact time for the foam to collapse (agitate stubborn deposits). Wipe clean using Workline CBL150 blue roll
- Use a Workline AntiVirus Hand and Surface Wipe to clean the touch screen display and stylus

Order Codes

K8 CODE	DESCRIPTION
216A7728	ARROW A044400AM 400ML SANIFOAM
212A6459	WORKLINE CBL150 2 PLY BLUE CENTREFEED 150m 175mm PACK OF 6
217A7489	WORKLINE WIPES 4 ANTI-VIRUS WIPES PACK OF 100

Professional Sanitising Range



Brammer Buck & Hickman are offering a range of products that protect against 99.99% of all known bacteria and viruses.

Produced by Arrow Solutions, a company with over 50 years of commercial and industrial expertise in chemical manufacturing, the new range of products rapidly and effectively clean, sanitise and protect against 99.99% of all known bacteria and viruses.



TERMINEX RTU

NEW, READY TO USE

Highly effective multi-surface infection control with a combined terminal bactericide and virucide disinfectant. Can be used prior to deep cleaning and is non-caustic and non-bleaching.



5lt

KR9 ANTI BACTERIAL SOAP

GENTLE CLEANSING

Unperfumed and undyed, gentle cleansing handwash with terminal anti-bacterial action. Suitable for catering and food preparation areas.



5lt

KR10 HAND SANITISER FOAM

NOW AVAILABLE IN 50ml

A safe and fast acting, foaming hand sanitiser for frequent use. Kills 99.999% of bacteria in accordance with EN1276.



50ml pump 500ml pump

QUAT FREE

HARD SURFACE SANITISER

NEW, READY TO USE

EN1276 non-caustic and ammonia free multi-surface terminal biocidal cleaner. Non-perfumed and highly effective disinfectant.



5lt

SANIFOAM

UNFRAGRANCED

Unfragranced terminal virucidal and bactericidal foaming aerosol cleaner designed for fast and effective multi-surface cleaning and sanitising.



400ml aerosol

HANDISAN

UNFRAGRANCED

An unperfumed, thickened hand sanitiser designed for use where a high standard of personal hygiene is required. 70% alcohol by volume.

- Denatured alcohol-based hand sanitiser. Non perfumed.
- Effective and quick dryin. Evaporates quickly on the hands, requires no additional drying.
- Contains skin conditioners and moisturisers.



500ml 5lt

Order Codes

K8 CODE	DESCRIPTION
216A7717	Terminex 5ltr RTU L3525XXNA
216A7749	KR9 Bactericidal Hand Soap 5ltr
215A6419	KR10 Foaming Hand Sanitiser 500ml
216A8490	C915050AU KR10 50ml
216A7726	Quat Free Hard Surface Sanitiser 5ltr RTU C8275XXAM
216A7728	400ml Sanifoam A044400AM
217A1297	C126 Handisan 70% Alcohol Hand Sanitiser Gel 5ltr
217A1300	ARROW C178500AM Handisan sanitiser 500ml
218A6362	ARROW EQ219 4ML DOSING STALK

FACT CHECKER

Chemical disinfectants and antiseptics. Quantitative suspension test for the evaluation of bactericidal activity of chemical disinfectants and antiseptics used in food, industrial, domestic and institutional areas.

DOSING STALK

4ml Dosing Stalk pump fits any 5 Litre Container. Perfect for dispensing chemicals/liquid from any 5L container.



Soap/Sanitiser Dispenser

Soap/Sanitiser Dispenser Bulk Fill 800ml Plastic

Lid easily lifts up to fill the dispenser.
Dispenser will carry sanitiser/liquid soap

Order Code

K8 CODE	DESCRIPTION
218A8851	WORKLINE DIS012SP 800ML SOAP / SANITISER DISPENSER



SUITABLE FOR USE WITH THIS DISPENSER.....

ARROWCHEM-C1785XXAM Handisan Sanitiser 70% Gel 5L

HANDISAN is an unperfumed, thickened hand sanitiser designed for use where a high standard of personal hygiene is required. 70% alcohol by volume.

- Denatured alcohol-based hand sanitiser.
- Effective quick drying sanitiser.
- Handisan evaporates quickly on the hands and requires no additional drying.
- Non perfumed.
- Contains skin conditioners and moisturisers to prevent dryness.



5lt

ARROW KR9 BACTERICIDAL HAND SOAP 5L

Unperfumed and undyed, gentle cleansing handwash with terminal anti-bacterial action. Suitable for catering and food preparation areas.

Sale Price £12.32 each



5lt



For these and other products, see page 18

Order Codes

K8 CODE	DESCRIPTION
217A1297	C126 HANDISAN 70% ALCOHOL HAND SANITISER GEL 5ltr
216A7749	ARROW KR9 BACTERICIDAL HAND SOAP 5ltr

> BioHygiene Sanitiser

BioHygiene's eco friendly sanitiser range provides a complete virucidal and bactericidal solution. Approved to EN14476 for enveloped viruses, including coronaviruses, e.g. SARS-CoV-2.

Available in ready to use and 'super concentrate' platforms

- Effective cleaning: Clean, Descale, Deodourise and Disinfect
- Eco friendly, naturally derived ingredients
- Approved to EN14476, EN1276, EN13697, EN13623, EN1650
- UK Manufacturer
- Super concentrate can be diluted to make 666 Triggers or 500L of solution making it a cost-effective solution for high volume applications including scrubber drier and fogging
- Available unfragranced or with a pleasant citrus fragrance



Order Code

K8 CODE	DESCRIPTION
216A0397	BIO HYGIENE BH112 ALL PURPOSE SANITISER FRAGRANCE FREE 750ml
217A2026	WORKLINE BH115 ALL PURPOSE SANITISER CONC UNFRAGRANCED 5L



> Safeclean Surface Sanitiser Spray

Safeclean has been specially formulated to kill/inhibit both bacteria and viruses (including enveloped viruses such as coronavirus) for up to five hours on a variety of surfaces such as handles, handrails, doors, tables and desks, and other areas of frequent contact, with a single coating.

It is ideal for offices, packing areas, vehicles, meeting rooms, factories, canteens and production or warehousing equipment. It is safe to use on the skin and alcohol free, meaning that there is no drying or irritation to the skin.

- Safe on any Surface – Including Skin
- Alcohol Free
- BS EN 1276 Tested
- 5 Hours Protection
- Activates Instantly
- Easy to Use

Also available in 17kg Canister – please contact us for more details.



Order Codes

K8 CODE	DESCRIPTION
217A7301	SAFECLEAN SAF001 SANITISER SPRAY 500ml AEROSOL
217A9757	SAFECLEAN SAF002 SAFECLEAN ANTI-BACTERIAL SANITISER SPRAY 22 LITRE
217A9776	SAFECLEAN SAF003 SAFECLEAN 4m HOSE TO SUIT SAF002
217A9773	SAF004 SAFECLEAN SPRAY GUN TO SUIT SAF002

KONIX Hand Disinfectant Gel

KONIX Hand Disinfectant Gel has been tested in accordance with the EN 14476 standard and have been proven to show virucidal activity against MERS and SARS family viruses. Antiviral efficacy tests have proven the gel provides 99.99% protection against viruses.

- 65% ethyl alcohol provides proven infection prevention against a wide range of microorganisms.
- One-step waterless procedure requires no rinsing, saving time and costs associated with using paper towels and water.
- Moisture enhanced clear gel contains conditioners that help prevent irritation.
- Rapid antimicrobial action delivers immediate protection.
- Compatible with lotions and latex gloves.
- Leaves your hands soft and fragranced.

Waterless hand sanitizer formulated to promote skin health and reduce the spread of infections. Contains moisturizers to condition and protect the skin and contains 65% ethyl alcohol to provide fast, proven antimicrobial efficacy against a wide range of microorganisms. The formula is dye-free with a reduced fragrance for sensitive skin.



Order Codes

K8 CODE	DESCRIPTION
217A7315	MIHS500 KONIX HAND SANITISER GEL 70% 500ML

Sanitiser & Hand Wipes

Brammer Buck & Hickman are offering two hand sanitising products that help protect against transmission of COVID-19 virus and bacteria.

INSTANT HAND SANITIZER

236ml bottle

- Kills 99.9% of germs without water
- Moisturising with Vitamin E & Aloe
- 24 Bottles per case

REV7 CODE	SURESAN-OJH-13550
K8 CODE	217A0008
DESCRIPTION	SURESAN INSTANT HAND SANITIZER 236ml



ANTIBACTERIAL UNIVERSAL WIPES

72 Wipes per pack

- Kills bacteria and viruses
- Wipe Size: 17cm x 16cm
- 24 Packs per case

REV7 CODE	SURESAN-OJH-13559V
K8 CODE	219A3849
DESCRIPTION	SURESAN OJH-13559V SURESAN OJH-13559V



Tested to comply
with European standards
EN14476 (Viricidal),
EN1276 (Bactericidal)
and
EN1650 (Fungicidal)

KR10 Hand Sanitising Foam

KR10 Hand Sanitising Foam is a fast-acting, alcohol-free foam hand sanitiser which has been designed for frequent use and without the need to rinse.

Kills 99.999% of bacteria in accordance with EN1276
Approved to EN 14476 for enveloped viruses

- Alcohol-free, it's pH neutral and will not dry, damage or irritate skin
- Suitable for children, perfect for nurseries, schools, colleges and universities
- Simply apply to hands and rub in to protect
- Also effective against Norovirus and C. diff
- Suitable for all religious beliefs
- No rinse and no drip formula
- Provides residual protection against bacteria

Ideal for any areas requiring high standards of cleanliness whilst maintaining the integrity of the skin, such as, catering industry institutions, schools and universities, and healthcare.



KR10 Hand Sanitiser Foam 500ml



KR10 Hand Sanitiser Foam 50ml

Order Codes

K8 CODE	DESCRIPTION
215A6419	ARROW C915500AU KR10 HAND SANITISER FOAM 500ml
216A8490	ARROW C915050AU KR10 FOAMING HAND SANITISER 50ml



> Workline Personal Sanitiser with clip



This Antibacterial Hand Gel comes in a personal size which is ideal for attaching to a belt or loop for easy accessibility. The gel dries quickly, cleaning and sanitising in one step, so there is no need to rinse afterwards.

- Hand sanitiser certified to EN 1276, EN 1500 and EN 14476
- 50ml bottle is easily refillable making it a cost effective way to carry sanitiser with you at all times



Order Codes

K8 CODE	DESCRIPTION
221A7454	WORKLINE C053 PERSONAL 50ml 73% SANITISER WITH CLIP

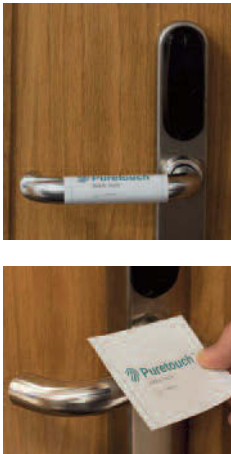
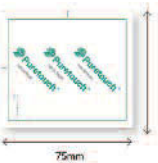
Puretouch™ Self-adhesive Antimicrobial Surface Wrap



Powered by Microbic™ Pull Handle Wrap Puretouch™ is a self-adhesive antimicrobial surface wrap. The active ingredient is Microbic™ AMS001. Wraps will last approximately 90 days depending on traffic. When it's time to replace, just peel off and stick on a new one.

PT01 – LEVER HANDLE WRAP Pack size 25

This self-adhesive lever handle wrap is 75 x 65mm which neatly fits the straight section of most U shaped lever handles. The easy to apply surfaces are a high quality composite fabric which is durable and soft to touch. The clear Puretouch™ graphics provides a clear message to everyone that this is a safe to touch surface. The surface should be washed or wiped with regular cleaners and will last approximately 90 days depending on traffic. When it's time to replace, just peel off and stick on a new one.



PT02 – WIDE PUSH PAD Pack size 25

This wide self-adhesive push pad is 150 x 250mm giving a generous area to place your hand. The easy to apply surfaces are a high quality composite fabric which is durable and soft to touch. The clear Puretouch™ graphics provides a clear message to everyone that this is a safe to touch surface. The surface should be washed or wiped with regular cleaners and will last approximately 90 days depending on traffic. When it's time to replace, just peel off and stick on a new one.



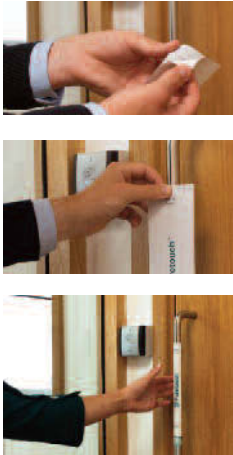
PT03 – PUSH PLATE WRAP Pack size 25

This self-adhesive push plate is 75 x 345mm this is 75mm wide and is the same width as the most common stainless steel push plates. The easy to apply surfaces are a high quality composite fabric which is durable and soft to touch. The clear Puretouch™ graphics provides a clear message to everyone that this is a safe to touch surface. The surface should be washed or wiped with regular cleaners and will last approximately 90 days depending on traffic. When it's time to replace, just peel off and stick on a new one.



PT04 – PULL HANDLE WRAP Pack size 25

This self-adhesive pull handle wrap is 75 x 250mm this is wide enough to fit round the two most common diameters, 19mm and 22mm and long enough to provide a good area to grip. The easy to apply surfaces are a high quality composite fabric which is durable and soft to touch. The clear Puretouch™ graphics provides a clear message to everyone that this is a safe to touch surface. The surface should be washed or wiped with regular cleaners and will last approximately 90 days depending on traffic. When it's time to replace, just peel off and stick on a new one.



K8 CODE	DESCRIPTION
219A6739	PUREHOLD PT01 ANTI-MICROBIAL LEVER HANDLE WRAP SIZE 65mm x 65mm PK25
219A6733	PUREHOLD PT02 ANTI-MICROBIAL PUSH PAD, SIZE 150mm x 250mm PK25
219A6736	PUREHOLD PT03 ANTIMICROBIAL PUSH BAR/WIDE HANDLE WRAP 345mm x 75mm PK25
219A6732	PUREHOLD PT04 ANTI-MICROBIAL MEDIUM HANDLE WRAP SIZE 250mm x 75mm PK25

Clean Tools

Reduce the Risk of COVID-19

As we return to work and introduce additional safety measures in the workplace, it's important to think about tool usage and ownership more closely. Issuing toolkits to each employee and implementing hygiene routines to keep tools clean between shifts are straightforward measures to introduce to help keep your employees safe.

TAKING ORDERS NOW – CONTACT YOUR LOCAL BRANCH

Reduce or Eliminate Tool Sharing

- Issue employees with their own tool kits, to reduce the use of shared workshop tools
- Avoid tools being shared by many people across social distancing boundaries
- Use stainless steel tools, that are easy to clean between shifts

Reduce Cross Contamination

- Have tools clearly marked, we have tool kit etching facilities
- Use tool storage, use stainless steel tool trolleys and units for easy cleaning
- Consider using easy to clean Plexiglass pre cut tool trays (these are also washable)

Clean Tools in between use

- Provide wipes with each kit
- Wipe before and after each shift using antibacterial wipes
- Wipes available to kill 99.9% of germs, with alcohol free options available too



Hand Wash Stations

Hand wash station – designed to meet new safety guidelines in the workplace

Safe, healthy working environments are now more important than ever, the care point offers a solution, providing mobile hand washing facilities for employees within their working environment. The easy access stations can be placed in the working area, this reduces the need to travel to and enter confined washrooms and encourages regular sanitation.

Hand Wash Station

Hand wash station for health & safety within the workplace

- Wash basin with tap and plug fittings
- Fresh and waste water connection
- Hot water via small boiler
- Through worktop waste disposal with removable bin in the right-hand cupboard
- Worktop: light grey HPL coated – easy to clean and disinfect
- Double lockable doors
- Rear frame with perforated panel
- Paper roll holder
- A4 Drawing pocket for employee information
- Storage shelf
- TiltBox
- Twin document holders

OPTIONAL:

- LED light with support frame
- 4 x swivel & brake castors for the mobile station

COLOUR VERSIONS AVAILABLE:

- RAL 7016 – anthracite grey (.19)
- RAL 7035 – light grey (.16)
- RAL 5010 – gentian blue (.11)
- RAL 3004 – crimson red (.24)



Order Codes

K8 CODE	MODEL No.	DESCRIPTION
217A6378	41003606.11v	41003606.11V STATIC CARE POINT 1500 X 670 X 1800 LIGHT GREY/BLUE
217A6379	41003607.11v	41003607.11V MOBILE CARE POINT 1500 X 670 X 1800 LIGHT GREY/BLUE
217A6380	41003608.11v	41003608.11V STATIC CARE POINT + LIGHT 1500 X 670 X 2200 LIGHT GREY/BLUE
217A6382	41003609.11v	41003609.11V MOBILE CARE POINT + LIGHT 1500 X 670 X 2200 LIGHT GREY/BLUE

Care Trolleys & Care Station



Care Trolley

The mobile care trolley enables sanitising and cleaning facilities to be available throughout your working environment.

- Double sided for safe distanced access
- 1000mm Wide x 650mm Deep x 1600mm High
- Panels may be fitted vertically or at an incline
- 125mm diameter castors and push - pull handle
- Handy base tray for additional storage
- RAL 7035 light grey epoxy powdercoat paint finish

Supplied empty, choose accessories from below, left:

Accessories



- Paper towel holder with cutter



- Bin bag holder



- Shelf (450mmW x 70mmD)



- Big wipes tub and holder



- A4 Information pocket



- Glove box holder



- Tiltbox and holder

Care Station



Wall mounted sanitisation station for easy access to cleaning or sanitising materials.

- Wall panel 750mm W x 1981mm H
- Twin adjustable height bin bag holder with lower support 335mm W x 325mm D x 665 - 855mm H
- RAL 7035 light grey epoxy powdercoat paint finish. Includes:
 - Paper towel holder
 - A4 information pocket
 - Big wipes tub and holder
 - Shelf

Order Codes

K8 CODE	MODEL No.	DESCRIPTION
217A6383	14026025.16v	14026025.16V MOBILE CARE TROLLEY 1000MM X 650 X 1600 LIGHT GREY 1000 X 650 X 1600 LIGHT GREY
217A6384	14030230.16v	14030230.16V WALL MOUNTED CARE STATION 750X340X1981 LIGHT GREY 750 X 340 X 1981 LIGHT GREY
80102424	14022038.16v	14022038.16V PAPER TOWEL HOLDER & CUTTERLIGHT GREY
217A6385	14014009.16v	14014009.16V A4 INFORMATION POCKETLIGHT GREY
217A6386	14022057.16v	14022057.16V BIN BAG HOLDERLIGHT GREY
217A6387	14014034.16v	14014034.16V SHELF 450X170MMLIGHT GREY
217A6388	14022056.16v	14022056.16V GLOVE BOX HOLDER
217A6389	16514180.19V	16514180.19V TILTBOX & HOLDER

Portable Hand-wash Station H-WASH 45

Supporting
MADE BLUE
For every H-WASH product sold, we donate enough clean water for two people, in a developing country to wash their hands for 365 days!

The ultimate portable hand-wash station that can be literally used anywhere. No plumbing, no electrics.

Built-to-last and easy to move around, the unit is ideal for a wide range of industries, and the capacity of 225 x 20 second washes per fill makes it perfect for high-footfall environments.

- Highly durable unit made from 70% recycled plastic
- Suitable for external/outdoor environments
- Hands-free water supply with foot operated tap
- Self-contained unit with easy- fill 45L storage tank, providing enough water for up to 225x 20 second hand washes
- Grey water is drained into a removable collection drum, removing the risk of contamination.
- Unit includes 5litre Soap dispenser, Paper towel dispenser, 25L Grey/waste water collection drum and waste bin
- Storage for extra consumables makes it easy to maintain the unit.
- Full forearm sink, meets HSE regulations

Weight: 25kg (without consumables)

Dimensions: 596 x 1555 x 470mm (WxHxD)



KR9 ANTI BACTERIAL SOAP

GENTLE CLEANSING

Unperfumed and undyed, gentle cleansing handwash with terminal anti-bacterial action. Suitable for catering and food preparation areas.



ANTIBACTERIAL HAND SOAP

K8 CODE

216A7749

1 PLY BLUE INTER-FOLD TOWELS

WORKLINE-HTBI500

1 Ply Blue Inter-Fold Towel 5000 Sheets
Packed 250 x 20
250mm Long x 210mm Wide

1 PLY BLUE INTER-FOLD TOWEL 5000 SHEETS

K8 CODE

213A3072

Order Codes

K8 CODE	DESCRIPTION
217A7957	HWASH 45 HAND WASH STATION 45LTR1450H X 620W X 560D

K8 CODE	213A3072
---------	----------

Hand Sanitisation Station H-WASH 45V

Supporting
MADE BLUE
For every H-WASH product sold, we donate enough clean water for two people, in a developing country to wash their hands for 365 days!

All-in-one unit, for hand sanitisation anywhere.

A slimline, hand-washing facility for internal use. Ideal for the back of large vans or trucks, and other internal environments where space is limited. Everything is accessible from the front of the unit, including the waste water tank and waste bin.

- Manufactured from 70% recycled plastic
- Slimline and compact making it suitable for delivery vehicles
- Can be wall mounted in an internal environment
- Hands-free water supply with foot operated tap
- Self-contained unit with easy-fill 45L storage tank, providing enough water for up to 225x 20 second hand washes
- Grey water is drained into a removeable collection drum
- Unit includes Soap bottle holder, Paper towel dispenser, 25L grey/waste water collection drum and waste bin
- Can be branded with your own logo (min quantity x25)
- Total weight – 20KG (not inc. water and consumables)

Weight: 22kg

Dimensions: 680 x 1410 x 310mm (WxHxD)



Order Codes

K8 CODE	DESCRIPTION
217A7958	HWASH 45V HAND WASH STATION 45LTR SLIMLINE 1320H X 720W X 220D

KR9 ANTI BACTERIAL SOAP

GENTLE CLEANSING

Unperfumed and undyed, gentle cleansing handwash with terminal anti-bacterial action. Suitable for catering and food preparation areas.



5lt

ANTIBACTERIAL HAND SOAP

K8 CODE

216A7749

2-PLY BLUE CENTREFEED ROLLS

WORKLINE-CBL150

2 ply blue centrefeed rolls.
150m Long x 175mm Wide 70mm Core
417 sheets Case of 6

2 PLY BLUE CENTREFEED ROLLS

K8 CODE

212A6459

Hand Sanitisation Station H-WASH 45H – 110 & 240 Volt

Supporting
MADE BLUE
For every H-WASH product sold, we donate enough clean water for two people, in a developing country to wash their hands for 365 days!

The ultimate portable hand-wash station that can be literally used anywhere. No plumbing, no electricians.

Built-to-last and easy to move around, the unit is ideal for a wide range of industries, and the capacity of 225 x 20 second washes per fill makes it perfect for high-footfall environments.

- Manufactured from 70% recycled plastic – lightweight and suitable for use in high footfall environments
- Suitable for external/outdoor environments
- 'Hands-free' water supply with foot operated tap
- Self-contained unit with easy-fill 45L storage tank, providing enough water for up to 225x 20 second hand washes
- Grey water is drained into a removeable collection drum
- Unit includes Soap dispenser, Paper towel dispenser, 25L Grey/waste water collection drum and waste bin
- Can be branded with your own logo (min quantity x25)
- Water heats to set temperature of 38 degrees
- Available in 110 or 240V – has to be selected at the time of order
- Weather-proof design

Dimensions: 596 x 1555 x 470mm (WxHxD)

Order Codes

K8 CODE	DESCRIPTION
223A7441	H WASH 45 H 240V H WASH HOT WATER STATION 240V 596 x 1555 x 470mm
223A7442	H WASH 45 H 110V H WASH HOT WATER STATION 110V 596 x 1555 x 470mm



KR9 ANTI BACTERIAL SOAP

GENTLE CLEANSING

Unperfumed and undyed, gentle cleansing handwash with terminal anti-bacterial action. Suitable for catering and food preparation areas.



5lt



2-PLY BLUE CENTREFEED ROLLS

WORKLINE-CBL150

2 ply blue centrefeed rolls.
150m Long x 175mm Wide 70mm Core
417 sheets Case of 6

2 PLY BLUE CENTREFEED ROLLS

K8 CODE 212A6459

ANTIBACTERIAL HAND SOAP

K8 CODE 216A7749

Hand-wash Unit for Vans and Trucks H-WASH 5

Supporting
MADE BLUE
For every H-WASH product sold, we donate enough clean water for two people, in a developing country to wash their hands for 365 days!

All-in-one sink unit for commercial vehicles and areas with limited space.

The slimline unit gives people the access to an effective hand wash in the most restricted circumstances. Ideal for the busy engineers and drivers of fleet vehicles across a wide range of industries.

Weight: 8kg (not including consumables)
Dimensions: 480 x 660 x 143mm (WxHxD)



KR9 ANTI BACTERIAL SOAP

GENTLE CLEANSING

Unperfumed and undyed, gentle cleansing handwash with terminal anti-bacterial action. Suitable for catering and food preparation areas.



ANTIBACTERIAL HAND SOAP

K8 CODE

216A7749

1 PLY BLUE INTER-FOLD TOWELS

WORKLINE-HTBI500

1 Ply Blue Inter-Fold Towel 5000 Sheets
Packed 250 x 20
250mm Long x 210mm Wide

1 PLY BLUE INTER-FOLD TOWEL 5000 SHEETS

K8 CODE

213A3072

Order Codes

K8 CODE	DESCRIPTION
217A7959	HWASH 5 HAND WASH STATION 5LTR660H X 483W X 148D

Hand Sanitisation Station H-WASH SS

Supporting
MADE BLUE
For every H-WASH product sold, we donate enough clean water for two people, in a developing country to wash their hands for 365 days!

Lockable dispenser holds 5L hand sanitiser container, and connects directly to the neck of the container

Brand the units with your company logo

Easy to clean – with removeable drip plate

Compact 300x300mm footprint – overall dimensions of: 300x1530x300mm (w x h x d)



Robust design, comes fully assembled with 12x units to a pallet

Paper-tissue or antibacterial wipes dispenser included

Integrated waste bin, which is emptied from the back of the unit

Storage for extra 5L container



All-in-one unit, for hand sanitisation anywhere.

Manufactured from 70% recycled durable material, these sturdy units are ideal for a wide range of industries and applications. The unit holds 1x 5 litre hand gel container, tissue or wipes, a waste bin and storage of 1x 5 litre hand gel refill. Ideal for spaces where soap and water is not convenient.

Weight: 10kg
Dimensions: 300 x 1530 x 300mm (WxHxD)

Order Codes

K8 CODE	DESCRIPTION
217A7960	HWASH SS HAND SANITISATION STATION 1530H X 300W X 300D

HANDISAN

UNFRAGRANCED

An unperfumed, thickened hand sanitiser designed for use where a high standard of personal hygiene is required. 70% alcohol by volume.

- Denatured alcohol-based hand sanitiser. Non perfumed.
- Effective and quick dryin. Evaporates quickly on the hands, requires no additional drying.
- Contains skin conditioners and moisturisers. 5lt



ANTIBACTERIAL HAND SOAP

K8 CODE 217A1297

2-PLY BLUE CENTREFEED ROLLS

WORKLINE-CBL150

2 ply blue centrefeed rolls.
150m Long x 175mm Wide 70mm Core
417 sheets Case of 6

2 PLY BLUE CENTREFEED ROLLS

K8 CODE 212A6459

Hand Sanitisation Station H-WASH RS

Supporting
MADE BLUE
For every H-WASH product sold, we donate enough clean water for two people, in a developing country to wash their hands for 365 days!

All-in-one battery operated unit, for hand sanitisation anywhere.

- Fast, effective, high volume hand sanitisation station – 12000 uses
- Battery, sensor operated unit, for hand sanitisation anywhere
- Manufactured from 70% recycled durable material, these sturdy units are ideal for a wide range of industries and applications. The unit holds a Ramsol hand sanitiser canister giving you 12000 uses before refilling.
- Touch free operated unit
- Kills 99.9% of bacteria
- Children friendly, hand friendly, wheelchair user friendly
- Battery powered with recharge option by mains
- Easily moved using wheels
- Lockable access panel
- Unit is sensor operated by motion within the hand sanitise compartment
- Supplied fully assembled with first canister ready to use. Canisters can be recycled after use.
- Weight: 10kg (without canister)
- Dimensions: 440 x 1350 x 440mm

The unit can be fully branded – minimum quantity of 25 units



Order Codes

K8 CODE	DESCRIPTION
220A3095	H-WASH RS SANITISATION STATION 440 X 440 X 1350mm (W X D X H)

Armorgard SaniStation Mini™

The Armorgard SaniStation Mini™ is a range of robust hand sanitiser stations with an anti-theft system for internal high-traffic environments.



Key features

- Compatible with standard 5L bottles
- Free-standing, fixed to the floor or castors available for mobility
- Built-in secure storage for extras (S10HF, S10P)
- Low dosage 5L bottle pump (2ml) to reduce spillage
- Up to 2,000 portions per bottle
- No installation required (S10HF, S10P, S10S)
- Simple, wall-mounted bracket (S10WM)

MODEL	DESCRIPTION	EXTERNAL DIMENSIONS	WEIGHT (kg)
		W x D x H (mm)	
S10HF	SaniStation Mini Hands Free (base plate:400mm)	150 x 200 x 1000	15
S10P	SaniStation Mini Premium (base plate: 400mm)	150 x 200 x 1000	15
S10S	SaniStation Mini Standard (base plate: 400mm)	200 x 1000	-12
S10WM	SaniStation Mini Wall Mounted	200 x 240	-2

K&B CODE	DESCRIPTION
219A6098	ARMORGARDS10HF SANISTATION MINI HANDSFREE
221A1252	ARMORGARDS10P SANISTATION MINI PREMIUM
221A1253	ARMORGARDS10S SANISTATION MINI STANDARD
221A1254	ARMORGARDS10WM SANISTAION MINI WALL MOUNTED

> Armorgard SaniStation S20™

The SaniStation S20™ is an exclusive solution for the deployment of a central hand sanitising unit.

Key features

- Both sides can be utilised
- Sealed lockable compartment, with padlock facility
- Complies with EN 1276, EN 13704, EN 14476, and EN 1500
- Suitable for external use

Includes as standard

- 1 x pump dispensers
- 1 x 5L hand sanitiser
- Relevant sanitising signage

Optional extras

- A packet of 60 wipes
- A bucket of 500 wipes
- Additional 5L hand sanitiser refills
- Additional pump dispensers
- Upgrade to automatic dispensers
- Padlocks for lockable compartment



MODEL	DESCRIPTION	EXTERNAL DIMENSIONS W x D x H (mm)	WEIGHT (kg)
S20	SaniStation	700 x 600 x 1725	26.5

K8 CODE	DESCRIPTION
221A1248	ARMORGARDS20 SANISTATION S20

Armorgard SaniStation Pro™

The SaniStation Pro™:
An all in one, mobile solution for
sanitising and hand washing.

Key features

- Tank fed water with self-contained waste or mains water and waste
- 25L capacity
- 2 x hands-free swing bins
- Foot pump operated tap
- Easily relocatable – fitted with castors
- Complies with EN 1276, EN 13704, EN 14476, and EN 1500
- Two-sided unit - one side for hand washing, the other side for sanitising
- Suitable for external use
- Lockable compartment

Includes as standard

- 1 x soap pump dispenser
- 1 x paper towel dispenser
- 1 x 5L non-alcohol sanitiser
- Stainless steel sink and tap
- Relevant signage

Optional extras

- A packet of 60 wipes
- A bucket of 500 wipes
- Additional 5L hand sanitiser
- Additional pump dispensers
- Upgrade to automatic dispensers
- Additional paper towel dispensers

MODEL	DESCRIPTION	EXTERNAL DIMENSIONS	WEIGHT (kg)
		W x D x H (mm)	
SP140	SaniStation Pro – Tank Fed	1725 x 700 x 600	172
SP160	SaniStation Pro – Mains Fed	1725 x 700 x 600	170

K8 CODE	DESCRIPTION
221A1250	ARMORGARDSP140 SANISTATION PRO – TANK FED
221A1251	ARMORGARDSP160 SANISTATION PRO – MAINS FED



> Armorgard SkrubKart™

SkrubKart™ is the mobile, instant, warm water hand washing solution, purpose-built for construction sites.

Key features

- Boiler with hot water reservoir for instant supply
- Up to 120 hand washes per tank
- Solid rubber tyres for rough terrains
- Easily manoeuvred by one individual
- Weather-proof, wipe-clean, durable surface
- Foot pump operated tap

Includes as standard

- 1 x soap dispenser
- 1 x paper towel dispenser
- Stainless steel sink and tap
- 2 x 25L tanks
- 1 x hands-free swing bin
- Relevant signage
- SBK1T/SKB2T include water heater

Ticks the box for

- Instant warm water hand washing facility (110V or 240V power)
- No plumbing with tank fed water and self-contained waste
- Mobile, robust, heavy-duty, long-term solution for construction sites



MODEL	DESCRIPTION	EXTERNAL DIMENSIONS W x D x H (mm)	WEIGHT (kg)
SBK1T	ScrubKart 110V Tank Fed	790 x 870 x 1450	-120
SBK2T	ScrubKart 240V Tank Fed	790 x 870 x 1450	-120

K8 CODE	DESCRIPTION
221A1255	ARMORGARDBK1T 110V TANK FED SCRUBKART
221A1256	ARMORGARDBK2T 240V TANK FED SCRUBKART

Armorgard ScrubHub™

A self-contained,
cold water hand
washing unit.

Key features

- Lightweight yet durable, easy to move to where footfall needs it
- Provides up to 225 hand washes (SH45, SH45V)
- Ideal for vehicles or confined spaces (SH45V)
- Suitable for both internal and external locations
- Manufactured from 70% recycled plastic
- Includes 5L soap dispenser, paper towel dispenser, 25L waste water tank and waste bin

Ticks the box for

- No need for plumbing or electricity
- Slimline design
- Hands-free water supply (SH45, SH45V)



Rear view



Dispenser, open

MODEL	DESCRIPTION	EXTERNAL DIMENSIONS	WEIGHT (kg)
		W x D x H (mm)	
SH45	ScrubHub with 45L Tank for Internal/External Use	596 x 470 x 1555	25
SH45V	ScrubHub with 45L Tank for Vehicle	680 x 310 x 1410	20

K8 CODE	DESCRIPTION
221A1259	ARMORGARDSH45 SCRUBHUB 45L FLOOR STANDING
221A1260	ARMORGARDSH45V SCRUBHUB 45L FOR COMMERCIAL VEHICLES

Paper Hand Towels and Dispensers

Recent government advice suggests turning off hand driers, removing cloth towels, and using paper towels in all washroom and canteen areas.

Workline Paper hand towels form a key product range for any washroom environment, and as they are supplied by esp you can be assured they will be of the highest quality.



WORKLINE-DIS09P
Workline universal hand towel dispenser

WORKLINE-HTWM230
2 Ply White Multi-Fold Towel
3000 Sheets Packed 20 X 150
240mm Long x 240mm Wide

WORKLINE-HTBM300
1 Ply Blue Multi-Fold Towel
3000 Sheets Packed 200 x 15
242mm Long x 240mm Wide

WORKLINE-HTG2880
1 Ply Green C-Fold Hand
Towel 2880 Sheets Packed
192 x 15
310mm Long x 225mm Wide

WORKLINE-HTBI500
1 Ply Blue Inter-Fold Towel
5000 Sheets Packed 250 x 20
250mm Long x 210mm Wide

WORKLINE-HTW240
2 Ply White C-Fold Hand
Towel 2400 Sheets Packed
15 x 160
310mm Long x 230mm Wide

WORKLINE-HTGI360
1 Ply Blue Inter-Fold Towel
5000 Sheets Packed 250 x 20
250mm Long x 210mm Wide

K8 CODE	DESCRIPTION
213A8807	WORKLINE DIS09P UNIVERSAL HAND TOWEL DISPENSER
213A3339	WORKLINE HTG2880 1 PLY GREEN C FOLD HAND TOWEL 15X192 SHEET
213A3352	WORKLINE HTW240 2 PLY LUXURY C FOLD HAND TOWELS 15 X 160
213A3337	WORKLINE HTBM300 1 PLY BLUE Z FOLD TOWEL 15X200 SHEETS RECYCLED
213A3072	WORKLINE HTBI500 1PLY BLUE INTERFOLD HAND TOWEL 20 SLEEVES
213A3351	WORKLINE HTGI360 1 PLY GREEN I FOLD TOWEL 15X240 SHEETS RECYCLED
213A3382	WORKLINE HTWM230 2 PLY WHITE M FOLD TOWEL 15X200 SHEETS PURE

Workline centrefeed rolls are suitable for busy washroom, catering and healthcare environments. These rolls are ideal for both drying hands and soaking up spills.



WORKLINE-DIS005
Workline DIS005
Centrefeed dispenser
plastic white



WORKLINE-CBL150
2 ply blue centrefeed rolls.
150m Long x 175mm Wide 70mm Core 417 sheets Case of 6

WORKLINE-CBL373
3 ply blue centrefeed rolls.
135m Long x 220mm Wide 70mm Core 375 Sheets Case of 6

WORKLINE-CBL300
1-ply blue centrefeed rolls.
300m Long x 190mm Wide 70mm Core Case of 6

WORKLINE-CWH150
2 ply white centrefeed rolls.
150m Long x 175mm Wide 70mm Core 417 sheets Case of 6

CENTRE FEED	
K8 CODE	DESCRIPTION
213A8861	WORKLINE DIS005 CENTREFEED DISPENSER PLASTIC WHITE
212A6459	WORKLINE CBL150 2 PLY BLUE CENTREFEED 150M 175MM PACK OF 6
212A6470	WORKLINE CBL300 1 PLY BLUE CENTREFEED 300M X 190MM PACK OF 6
212A6473	WORKLINE CBL373 3 PLY BLUE CENTREFEED 135M X 190MM PACK OF 6
212A6481	WORKLINE CWH150 2 PLY WHITE CENTREFEED 150M X 175MM PACK OF 6

WypAll® Reach Centrefeed System

Helping you drive hygiene throughout your facility

WypAll® centrefeed rolls, designed for light duty hygiene wiping and perfect for tasks like cleaning food preparation and service surfaces in retail and service environments.



WYPALL REACH WIPING PAPER CENTREFEED ROLL BLUE
(430 sheets) KC-6223 212A007

Designed for light duty hygiene wiping and perfect for tasks like cleaning food preparation and service surfaces. Compatible with the portable WypAll® Reach™ dispenser (6221) which ensures rolls remain enclosed to help prevent against transmission of food-borne bacteria.



WYPALL REACH WIPING PAPER CENTREFEED ROLL WHITE
(430 sheets) KC-6222 212A006

Designed for light duty hygiene wiping and perfect for tasks like cleaning food preparation and service surfaces. Compatible with the portable WypAll® Reach™ dispenser (6221) which ensures rolls remain enclosed to help prevent against transmission of food-borne bacteria.



WYPALL WIPING PAPER CENTREFEED ROLL BLUE
(280 sheets) KC-6220 212A0083

Blue roll designed for light duty hygiene wiping and designed for use in retail and service environments. Compatible with the portable WypAll® Reach™ dispenser (6221) which ensures rolls remain enclosed to help prevent against transmission of food-borne bacteria.



WYPALL WIPER DISPENSER

Transparent black, portable, single-sheet wiper dispenser. Ensures rolls remain clean and enclosed to help prevent transmission of food-borne bacteria. Bracket included for wall mounting the dispenser. Fits Service & Retail Centrefeed Rolls (6220) and Food & Hygiene centrefeed rolls (6222 & 6223).

K8 CODE	DESCRIPTION
212A0071	WYPALL 6223 REACH WIPING PAPER CENTREFEED BLUE 6 ROLLS X 430 SHEETS
212A0065	WYPALL 6222 REACH WIPING PAPER CENTREFEED WHITE 6 ROLLS X 430 SHEETS
212A0083	WYPALL 6220 REACH WIPING PAPER CENTREFEED BLUE 6 ROLLS X 280 SHEETS
212A0055	WYPALL 6221 REACH CENTREFEED WIPER DISPENSER BLACK

> Tork Handtowels and Dispensers

Tork PeakServe® Continuous™ Hand Towel

Tork PeakServe®: the latest innovation designed for high-traffic washrooms where staff need to maximise cleaning time and maintain a good flow of people. Compatible with Tork PeakServe® Continuous™ hand towels, the system has a very high capacity of 2100 towels, which can be dispensed quickly and without interruption to keep the flow. The compressed refills are fast to load, can be topped up at any time and are easy to store and transport, enabling staff to focus on cleaning, not refilling.



K8 CODE	DESCRIPTION
2591234	TORK 100585 TORK PEAKSERVEE CONTINUOUS HANDTOWEL WHITE

Tork PeakServe® Mini Continuous™ Hand Towel Dispenser White/Black

Tork PeakServe® Mini the latest innovation designed for high-traffic washrooms where staff needs to maximise cleaning time and maintain a good flow of people. Compatible with Tork PeakServe® Continuous™ hand towels, the system has a very high capacity of 1230 towels, which can be dispensed quickly and without interruption to keep the flow. The compressed refills are fast to fill, can be topped up at any time and are easy to store and transport, enabling staff to focus on cleaning, not refilling.



K8 CODE	DESCRIPTION
215A8357	TORK 552550 PEAKSERVE MINI CONTINUOUS HAND TOWEL DISPENSER WHITE
215A8360	TORK 552558 PEAKSERVE MINI CONTINUOUS HAND TOWEL DISPENSER BLACK

Tork PeakServe® Continuous™ Hand Towel Dispenser White/Black

Tork PeakServe® the latest innovation designed for high-traffic washrooms where staff needs to maximise cleaning time and maintain a good flow of people. Compatible with Tork PeakServe® Continuous™ hand towels, the system has a very high capacity of over 2100 towels, which can be dispensed quickly and without interruption to keep the flow. The compressed refills are fast to fill, can be topped up at any time and are easy to store and transport, enabling staff to focus on cleaning, not refilling.



K8 CODE	DESCRIPTION
2591239	TORK 552500 TORK PEAKSERVEE DISPENSER WHITE
219A1506	TORK 552508 TORK PEAKSERVE HAND TOWEL DISPENSER BLACK

> Kärcher steam cleaners to combat viruses

KÄRCHER

Kärcher arranged to have its steam cleaners tested in an independent laboratory for effectiveness in fighting viruses.

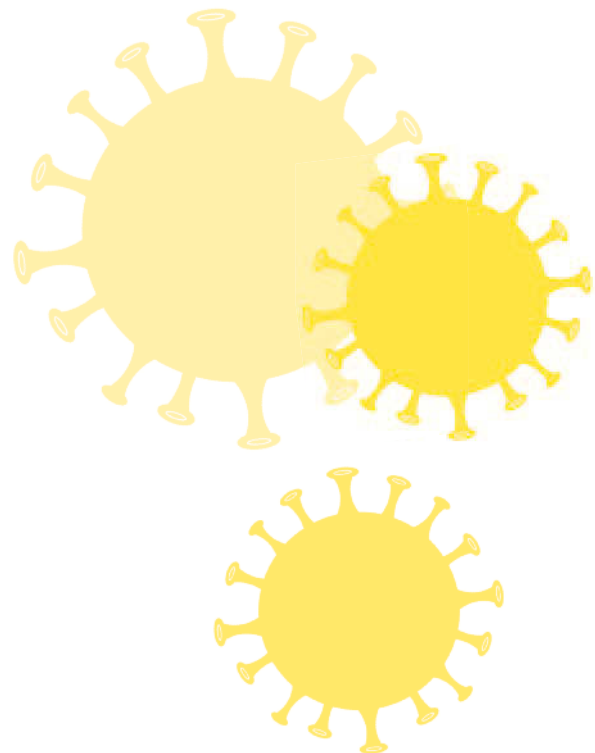
The result: if used properly, the machines remove up to 99.999% of enveloped viruses*, such as the coronavirus or influenza, and 99.99% of common household bacteria** from hard surfaces. At the present time, disinfectants are to be reserved primarily for outpatient and inpatient care, but steam cleaners can make a valuable contribution to general hygiene – both in private households and in commercial and industrial use.

The laboratory test

Kärcher tested steam cleaners for domestic use as well as machines for professional use. Whether the steam is produced in a boiler or in a water heater, it doesn't affect the result in combating the virus; both technologies achieved a comparable result in the laboratory.

Enveloped viruses such as the coronavirus can be neutralised with high temperatures. As viruses are not germs or living organisms, experts also talk about virus inactivation.

In the laboratory a certified test virus (Modified-Vaccinia-Ankara-Virus), which is representative for enveloped viruses, was distributed on a hard surface. This area was then cleaned with the hand nozzle of a steam cleaner and the appropriate microfibre pad. It was demonstrated that a significant reduction of up to 99.999% of the viruses could be achieved at maximum steam pressure and with a cleaning duration of 30 seconds on one area.



*Tests have shown that with spot cleaning of 30 secs at max. steam level with the Kärcher home steam cleaner 99.999% of enveloped viruses such as coronavirus or influenza (excluding the Hepatitis-B virus) can be removed on typical household smooth, hard surfaces (test-germ: Modified-Vaccinia-Ankara-Virus).

**When thoroughly cleaning with the Kärcher steam cleaner 99.99% of all common household bacteria will be killed on typical household smooth, hard surfaces, provided the cleaning speed of 30 cm/s at max. steam setting (test-germ: Enterococcus hirae). With Kärcher professional steam cleaners SG(V) this is 99.999%, according to EN 16615:2015-06, on PVC floors. (test germ: Enterococcus hirae ATCC 10541).

> Window and Hard Surface Cleaner

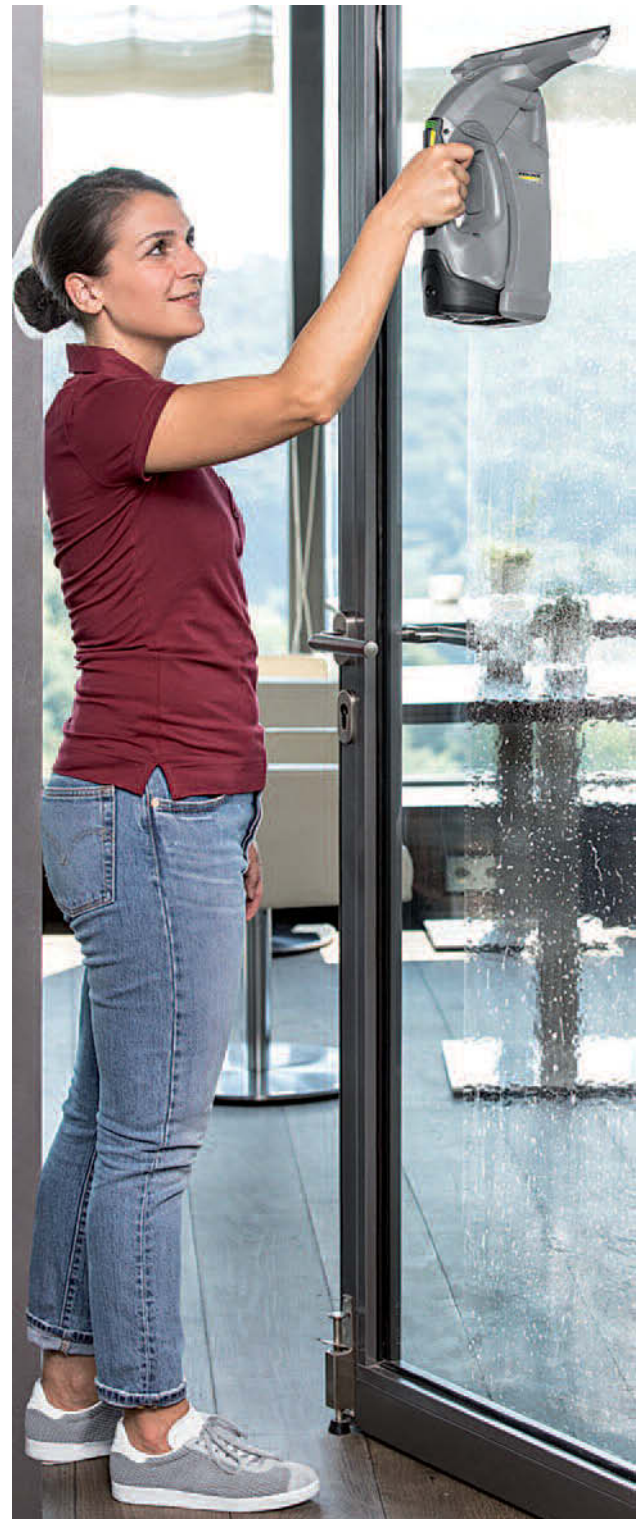
For smooth surfaces from windows to tiles: The battery-powered WVP 10 window and surface vacuum cleaner ensures perfect results without streaks, is comfortable to hold and even allows you to work overhead.

The professional window and surface cleaner, WVP 10 Adv, impresses with its streak free cleaning of flat surfaces. Designed for professional use, the robust and lightweight device is ideal for cleaning windows, tiles and table tops, plus a range of other flat surfaces. It has a large dirty water collection tank and can be used in a vertical and horizontal position, and even overhead thanks to its large non-return valve. The WVP 10 Adv, leaves surfaces and workspaces instantly dry and ready to use straight away, taking liquid collection to a different level.



Order Code

K8 CODE	DESCRIPTION
207A0775	WINDOW AND HARD SURFACE CLEANER



> Steam Cleaner

KÄRCHER

Hygienic and thorough cleaning with professional steam cleaners and steam vacuum cleaners.

Professional steam cleaners can effectively combat germs, bacteria and viruses on walls, floors or furniture. The steam emerges from the nozzle in very fine droplets and, depending on the type of appliance, at a temperature of around 100°C and a maximum pressure of up to 8 bar. The acceleration is about 170 km/h. Therefore, the steam reaches cracks or rubber folds where brushes or cloths cannot easily access, so hard-to-reach areas can be hygienically and thoroughly cleaned.



Order Code

K8 CODE	DESCRIPTION
80186525	STEAM CLEANER

> Contact your local branch to find out more 0870 240 2100

uk.rubix.com

> Steam Generating Vacuum

KÄRCHER

Hygienic and thorough cleaning with professional steam cleaners and steam vacuum cleaners.

Professional steam cleaners can effectively combat germs, bacteria and viruses on walls, floors or furniture. The steam emerges from the nozzle in very fine droplets and, depending on the type of appliance, at a temperature of around 100°C and a maximum pressure of up to 8 bar.

The acceleration is about 170 km/h. Therefore, the steam reaches cracks or rubber folds where brushes or cloths cannot easily access, so hard-to-reach areas can be hygienically and thoroughly cleaned.



Order Code

K8 CODE	DESCRIPTION
80175484	STEAM GENERATING VACUUM

> Hot Water Pressure Washer with Steam Function

KÄRCHER

The use of hot water high-pressure washers speeds up cleaning by up to 40 percent compared to cold-water units, especially due to the faster drying time of the clean surfaces.

In addition to better results and a faster cleaning and drying time, a measurable reduction of bacteria, germs and viruses can be achieved when using hot water, high-pressure cleaners and a water temperature of at least 85°C. With the help of the steam setting it is even possible to clean at temperatures of up to 155°C.



Order Code

K8 CODE	DESCRIPTION
80356383	HOT WATER PRESSURE WASHER WITH STEAM FUNCTION

> Contact your local branch to find out more 0870 240 2100

uk.rubix.com

> Scrubber Drier

KÄRCHER

As easy to use as an upright vacuum cleaner, the 30/4 thoroughly cleans and dries floors in a single pass, and can also be used for deep cleaning.

Using a BR 30/4 C is faster, easier, more hygienic and safer for operators and the public than mopping, leaving floors instantly clean, safe and usable.



Order Code

K8 CODE	DESCRIPTION
80102895	SCRUBBER DRIER

> Contact your local branch to find out more 0870 240 2100

uk.rubix.com

> Hydro-Fog & Whole Room Disinfection

Fogging of surfaces with suitable disinfectants is proven to be effective against bacteria and viruses including Coronavirus. Our cleaning practices meet Public Health England guidance and methodologies.

- A 3% solution of Hydrogen Peroxide will inactivate Bacteria and Viruses within 1-30 minutes of contact.
- Hydro-X offers fogging services that can disinfect whole rooms, including hard to reach areas using disinfectant fog, spray and manual cleaning methods. Most services will be complete on the same day with full same day reporting by our MDS system.
- The service uses chemical dosing skids, mobile fogging units and disinfectant sprayers that will reach all areas that wouldn't be reached by manual cleaning techniques alone. An operator wearing suitable PPE will direct the fogger or spray unit to all desired areas to ensure disinfection.

Contact us now to discuss how our fogging services can assist your business.

HYDRO-FOG BENEFITS

- Room back in use same day
- Whole room disinfection including hard to reach areas
- Flexible service to ensure all rooms / areas can be disinfected
- Effective against bacteria and viruses including Coronavirus
- Same day disinfection reporting
- Full UK based chemical production with consistently available stock

Ordering – Price available on request

Please contact:

> Caroline Farley
Cleaning and Hygiene
Product Manager,
Mobile: 07484 922483,
caroline.farley@bbh-rubix.com

Or our supply partner:

> Katy Coxall,
Business Development Coordinator
Mobile: 07917 890210
Katy.Coxall@hydro-x.co.uk



Antibacterial Room and Car Foggers



ProXL Anti-Bacterial Room Fogger Aerosol (200ml)

- Contains over 90% alcohol
- Tested to BS EN 1276, BS EN 1650 and BS EN 14476
- Total release fills areas up to 100m³
- Leaves an anti-bacterial layer on all surfaces

ProXL Anti-Bacterial Room Fogger Aerosol fully conforms to BS EN 1276, BS EN 1650 and BS EN 14476 with an alcohol content above 90% giving a clean and fresh fragrance.

ProXL Anti-Bacterial Room Fogger Aerosol is a perfect solution where an area of up to 100m needs to be sanitized quickly such as vehicles, public transport, medical areas and offices. Within 15 minutes, all surfaces will have an anti-bacterial layer and the air will have been sanitized.

K8 CODE	DESCRIPTION
219A7172	ANTI-BACTERIAL FOGGER ROOM SANITIZER 200ml



ProXL Anti-Bacterial Car Fogger Aerosol (100ml)

- Contains over 90% alcohol
- Tested to BS EN 1276, BS EN 1650 and BS EN 14476
- Ideal for small areas such as vehicles
- Leaves an anti-bacterial layer on all surfaces

ProXL Anti-Bacterial Car Fogger Aerosol fully conforms to BS EN 1276, BS EN 1650 and BS EN 14476 with an alcohol content above 90% giving a clean and fresh fragrance.

ProXL Anti-Bacterial Car Fogger Aerosol is a perfect solution for small areas such as vehicles, taxis and rental vehicles.

Within 15 minutes, all surfaces will have an anti-bacterial layer and the air will have been sanitized.

K8 CODE	DESCRIPTION
219A7175	ANTI-BACTERIAL FOGGER CAR SANITIZER 100ml

ProXL Power Blast 95 Disinfectant Spray

ProXL Power Blast 95 Aerosol (750ml)

- Over 95% alcohol
- Conforms to BS EN 1276, 1650 and 14476
- Ideal for very large areas
- Covers 40 to 60m²
- ProXL Power Blast 95 is formulated for very high coverage, with a unique nozzle capable of spraying 40ml per second.
- Highly suitable for large areas such as warehouses, store rooms and conference rooms.

K8 CODE	DESCRIPTION
220A1733	PROXL HEAPBS95750 PROXL POWER BLAST 95 AEROSOL (750ml)



> Airofog Professional Cold Fogger U240

Airofog professional cold fogger U240 is a portable ULV applicator. A reliable and powerful electric high speed (35,000 rpm) AC induction motor and fan create very small spray droplets, in the 15-30um droplet size range, by using a vertical air shear nozzle. The fine aerosol droplets will remain airborne for an extended period of time and are dispersed over an extensive area by the powerful air outlet at the nozzle. Airofog ULV (ultra-low volume) cold fogger model U240 is in CE conformity in scope of EMS Directive.



- Powerful portable fogging device with up to 6m projection
- Precise controlled fog particle size for maximum efficiency
- Compact ergonomic design
- Separate filling aperture for ease of use
- Quick change large air filter cartridge
- Simple variable flow control with finger operated dial
- 5L graduated translucent solution tank
- Designed for professional use

K8 CODE	DESCRIPTION
223A9024	SOLO SPRAYERS U240HHCF 5L COLD FOGGER 220-240V 800W BLUE

> Airofog Professional Cold Fogger U260

Airofog professional cold fogger U260 is a portable ULV applicator. A reliable and powerful electric high speed (35,000 rpm) AC induction motor and fan create very small spray droplets, in the 15-30um droplet size range, by using a vertical air shear nozzle. The fine aerosol droplets will remain airborne for an extended period of time and are dispersed over an extensive area by the powerful air outlet at the nozzle.



The U260 model has an extendable hose that allows the operator to direct the fog into difficult to reach areas and spot treat where necessary. Airofog ULV (ultra-low volume) cold fogger model U260 is in CE conformity in scope of EMS Directive. of EMS Directive.

- Powerful portable fogging device with 50cm extendable hose, for easier application.
- Precise controlled fog particle size for maximum efficiency
- Compact ergonomic design
- Separate filling aperture for ease of use
- Quick change large air filter cartridge
- Simple variable flow control with finger operated dial
- 5L graduated translucent solution tank
- Designed for professional use

K8 CODE	DESCRIPTION
223A9146	SOLO SPRAYERS U260 5L COLD FOGGER WITH HOSE 220-240V 800W RED

> Airostar Professional Cold Fogger (Battery)

Airostar professional cold fogger is a battery operated portable ULV applicator. The Battery option allows the Airostar to run continuously for 1 hour at high velocity. Taking air velocity and battery run time into consideration Airostar's performance is outstanding. The fine aerosol droplets will remain airborne for an extended period of time and are dispersed over an extensive area by the powerful air outlet at the nozzle.

The Airostar model has an extendable hose that allows the operator to direct the fog into difficult to reach areas and spot treat where necessary.

Airofog ULV (ultra-low volume) cold fogger model is in CE conformity in scope of EMS Directive.

- Powerful portable fogging device with 50cm extendable hose, for easier application.
- Precise controlled fog particle size for maximum efficiency
- Compact ergonomic design
- Separate filling aperture for ease of use
- Quick change large air filter cartridge
- Simple variable flow control with finger operated dial
- 2.5L graduated translucent solution tank
- Designed for professional use



K8 CODE	DESCRIPTION
223A9153	SOLO SPRAYERS AIROSTAR 2.5L BATTERY OPERATED COLD FOGGER W/HOSE

Numatic NSU370 High-Pressure Misting Disinfection System

Numatic NSU370 High-Pressure Misting Disinfection System

A high-pressure misting disinfection system, the NSU370 Sanitise Pro delivers 99.999% efficiency in inactivating and destroying pathogens.

- Stainless Steel misting nozzle
- Easy use hand-trigger
- Heavy-duty, hard-wearing hose
- Large rear wheels for stability
- Huge 5L capacity
- Long 10m Hi-Vis cable
- High-pressure 217psi mist pump
- Use in conjunction with our surface sanitisers on page 15



Order Code

K8 CODE	DESCRIPTION:
221A9262	NUMATIC NSU370 HIGH-PRESSURE MISTING DISINFECTION SYSTEM S

Suitable for use with these surface sanitisers:

TERMINEX RTU

NEW, READY TO USE

Highly effective multi-surface infection control with a combined terminal bactericide and virucide disinfectant. Can be used prior to deep cleaning and is non-caustic and non-bleaching.



5lt



QUAT FREE

HARD SURFACE SANITISER

NEW, READY TO USE

EN1276 non-caustic and ammonia free multi-surface terminal biocidal cleaner. Non-perfumed and highly effective disinfectant.



5lt



Order Codes

K8 CODE: 216A7717
DESCRIPTION:
TERMINEX 5ltr RTU L3525XXNA

K8 CODE: 216A7726
DESCRIPTION:
QUAT FREE HARD SURFACE SANITISER
5ltr RTU C8275XXAM

SafeScreen Pro Protective Screens



SafeScreen Pro U-Shape



SafeScreen Pro L-Shape

Protect employees and customers from airborne contamination.

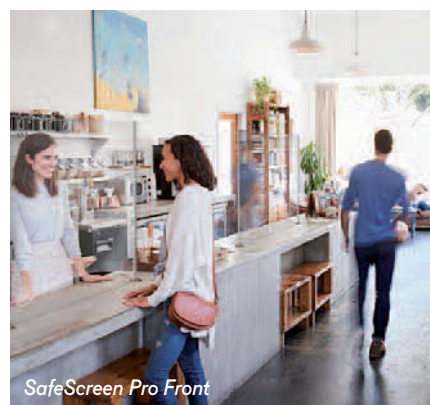
- Simple to assemble and quick to install, no measuring required.
- Provides an effective yet simple barrier against germs spread by talking, coughing or sneezing.
- An economical covid-19 solution manufactured in the UK.
- Strong magnetic fixings combined with self-adhesive pads provide stability and reliability.
- Clear plastic allows employees to communicate and minimises disruption.
- Flexible – shields can be positioned to suit desks of different shapes and sizes.
- Ideal for use in offices, receptions, restaurants, schools and more.
- Screens are 100% recyclable.



SafeScreen Pro Front

Order Codes

K8 CODE	DESCRIPTION
218A7725	SAFESCREEN PRO FRONT SMALL 650mm HIGH X 850mm LENGTH
218A7726	SAFESCREEN PRO FRONT MEDIUM 850mm HIGH X 1800mm LENGTH
218A7727	SAFESCREEN PRO L-SHAPE MEDIUM 850mm HIGH X 1800mm LENGTH
218A7728	SAFESCREEN PRO L-SHAPE LARGE 850mm HIGH X 2600mm LENGTH
218A7729	SAFESCREEN PRO U-SHAPE MEDIUM 850mm HIGH X 1800mm LENGTH
218A7730	SAFESCREEN PRO U-SHAPE LARGE 850mm HIGH X 2600mm LENGTH



SafeScreen Pro Front

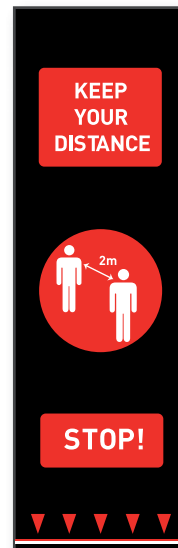
Social Distancing Floor Mats



A range of loose lay floor mats to promote social distancing available in bespoke designs and sizes.

- Communicate social distancing rules to your staff or customers to reduce coronavirus spread
- Standard and bespoke sizes and designs available
- Ideal for all public buildings including hospitals, supermarkets, offices
- Cost effective and durable way to demonstrate that you take health and safety seriously
- Printed digitally for superb colour reproduction and definition
- Machine washable at 30°C
- Mats stay in place thanks to vinyl backing, but can also be relocated and washed unlike floor stickers
- Product Height: 6mm

SOCIAL DISTANCING FLOOR MATS 0.65m X 2.0m PEOPLE



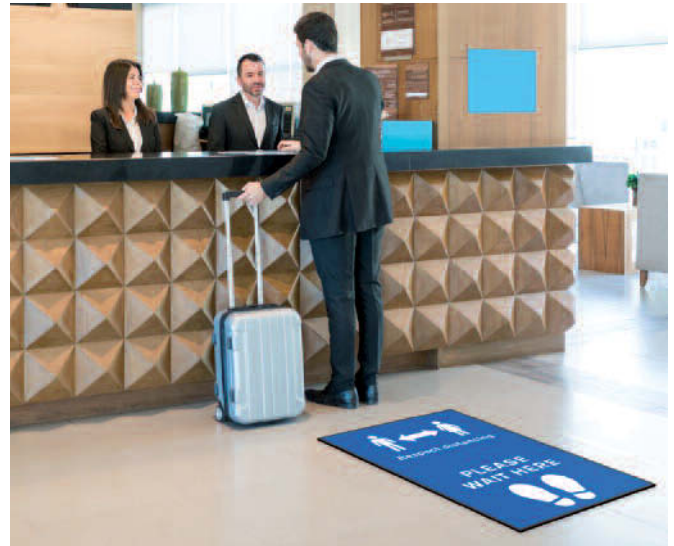
SOCIAL DISTANCING FLOOR MATS 0.65m X 2.0m FOOTPRINTS



Order Codes

K8 CODE	DESCRIPTION
216A9463	COBA SDM010001 SOCIAL DISTANCING FLOOR MATS 0.65m X 2.0m PEOPLE, RED 0.65 X 2.0m RED
216A9464	COBA SDM030001 SOCIAL DISTANCING FLOOR MATS 0.65m X 2.0m PEOPLE, BLUE 0.65 X 2.0m BLUE
216A9465	COBA SDM010002 SOCIAL DISTANCING FLOOR MATS 0.65m X 2.0m FOOTPRINTS, RED 0.65 X 2.0m RED
216A9466	COBA SDM030002 SOCIAL DISTANCING FLOOR MATS 0.65m X 2.0m FOOTPRINTS, BLUE 0.65 X 2.0m BLUE
216A9467	COBA DST0001 DISTANCING MAT DOUBLE SIDED TAPE 50mm X 50m 50mm X 50m

Social Distancing & Sign Mats



Communicate hygiene and social distancing rules to your staff or customers to limit the spread of Coronavirus.

- Ideal for all public buildings including retail, hospitality, healthcare, supermarkets, and offices.
- A cost effective and durable way to demonstrate that your business is 'COVID-19 Secure.'
- No more expensive than floor stickers but can be relocated and washed with ease.
- Printed digitally for superb colour reproduction and definition.
- Low profile borders to reduce the risk of trips.
- Machine washable at 30°C.
- Product Weight: 3 kg.
- Product Height: 6 mm.



Order Codes

K8 CODE	DESCRIPTION
218A4897	COBA EUROPE SDM020005 0.6m x 0.95m PLEASE WAIT HERE (PACK OF 2) BLUE
218A4898	COBA EUROPE SDM010201 0.6m x 0.95m FOOTPRINTS (PACK OF 2) BLACK/BLUE
218A4899	COBA-SDM010202 0.95m x 0.6m PLEASE RESPECT LANDSCAPE (PK 2) BLK/BL
218A4900	COBA EUROPE SDM010203 0.6m x 0.95m PLEASE RESPECT PORTRAIT PK 2) BLK/BL
218A4901	COBA EUROPE SDM020006 0.65m x 0.9m PLEASE WASH HANDS (PACK OF 2) BLUE
218A4902	COBA EUROPE SDM020007 0.6m x 0.95m PLEASE SANITISE HANDS (PK 2) BLUE
218A4903	COBA EUROPE SDM020008 0.95m x 0.6m PLEASE RESPECT & WAIT (PK 2) BLUE
218A4904	COBA-SDM010301 0.6m x 0.95m STOP KEEP YOUR DISTANCE (PK 2) BLK/RED
218A4905	COBA EUROPE SDM010204 0.6m x 0.95m ONE WAY ARROW (PACK OF 2) BLACK/BLUE

Orthomat® Social Distancing Mats



Reduce standing fatigue and highlight social distancing

- Reduce strain and tiredness from standing with these comfortable foam mats.
- Keep employees safe by communicating social distancing rules clearly.
- Premium option has two layers for extended comfort and durability, and is suitable when workers are moving and turning more frequently.
- Insulate standing workers against the impact of concrete floors.
- Lightweight, so easy to transport and reposition.
- Best suited to dry environments.
- Textured surface provides attractive appearance.
- Tapered edges to reduce trip hazards.
- Fire tested to BS EN 13501-1.



Mat Size	Type	Product Height	Colour
0.9m x 1.5m	Orthomat®	Standard 9.5mm	Black/Blue
0.9m x 1.5m	Orthomat®	Premium 12.5mm	Black/Blue



Order Codes

K8 CODE	DESCRIPTION
218A4906	COBA EUROPE AF010004SD ORTHOMAT SD BLACK 0.9M X 1.5M BLACK
218A4907	COBA EUROPE FF010008SD ORTHOMAT PREMIUM SD 0.9M X 1.5M BLACK

> Social Distancing Stencil Kits

Highly visible floor stencil kits to easily and clearly highlight social distancing in external areas. Help keep people two metres apart in outside public queues and workplaces.

Each kit is available with 1 stencil, 1 ruler, 2 cans of paint and a hand held applicator. Choose from 4 different stencils and 3 different paint colours – red, yellow or white. Dimensions of the stencils are 400mm x 500mm overall.

Ideal for outside retailers, supermarkets, post offices, banks, pharmacies, public parks, bus stops and many more...

- Easy to use social distance floor stencils
- Choose from 4 stencil kits
- Each stencil is 400mm x 500mm overall
- Reusable and long lasting
- Cost-effective way to practice social distancing
- Easily measure out 2 metres with the flexible social distance ruler
- 3 different paint colours - red, yellow, white
- Ideal for external areas

SEE FOLLOWING PAGES FOR AVAILABLE KITS



› Social Distancing Stencil Kits

Kit 1 KIT CONTENTS: 1 Stencil, 1 Ruler, 2 cans of paint, 1 Hand Held Applicator



MODEL No.	K8 CODE	DESCRIPTION
STVKIT01/YE	217A5298	STVKIT01/YE YELLOW STENCIL KIT 1 - 2M
STVKIT01/RE	217A6483	STVKIT01/RE RED STENCIL KIT 1 - 2M
STVKIT01/WH	217A6484	STVKIT01/WH WHITE STENCIL KIT 1 - 2M

Kit 2 KIT CONTENTS: 1 Stencil, 1 Ruler, 2 cans of paint, 1 Hand Held Applicator



MODEL No.	K8 CODE	DESCRIPTION
STVKIT02/YE	217A6485	STVKIT02/YE YELLOW STENCIL KIT 1-KEEP YOUR DISTANCE
STVKIT02/RE	217A6486	STVKIT02/RE RED STENCIL KIT 1 - KEEP YOUR DISTANCE
STVKIT02/WH	217A6488	STVKIT02/WH WHITE STENCIL KIT 1-KEEP YOUR DISTANCE

Kit 3 KIT CONTENTS: 1 Stencil, 1 Ruler, 2 cans of paint, 1 Hand Held Applicator



MODEL No.	K8 CODE	DESCRIPTION
STVKIT03/YE	217A6489	STVKIT03/YE YELLOW STENCIL KIT 3 - 2M
STVKIT03/RE	217A6490	STVKIT03/RE RED STENCIL KIT 3 - 2M
STVKIT03/WH	217A6491	STVKIT03/WH WHITE STENCIL KIT 3 - 2M

Kit 4 KIT CONTENTS: 1 Stencil, 1 Ruler, 2 cans of paint, 1 Hand Held Applicator



MODEL No.	K8 CODE	DESCRIPTION
STVKIT04/YE	217A6492	STVKIT04/YE YELLOW STENCIL KIT 3-PLEASE STAND HERE
STVKIT04/RE	217A6493	STVKIT04/RE RED STENCIL KIT 3 - PLEASE STAND HERE
STVKIT04/WH	217A6494	STVKIT04/WH WHITE STENCIL KIT 3 - PLEASE STAND HERE



Seat Markers

Help maintain social distancing and encourage people not to sit within 2 metres of each other in public places with these Social Distancing Seat Markers.

Ideal for buses, trains, stadiums, restaurants, cafeterias, waiting rooms, schools, airports, conference rooms and many more.

With 4 different designs of social distance labels, choose whether to stick the label straight onto the chair or use the plastic disk and cord to tie it around the seat. These markers will stand the test of time as the labels are highly durable with a strong aggressive adhesive to stop them peeling or lifting.

Each label has a diameter of 125mm and an overall diameter with disk of 150mm. The black cord is 1 metre long to accommodate most chairs.

- Encourage people not to sit within 2 metres of each other in public places
- Premium quality and highly durable labels
- Highly visible to highlight the seats not to sit on
- Made up of a label, white disk and cord
- Overall diameter of 150mm
- Can be moved and used time and time again
- Black elasticated cord is UV resistant, waterproof and hard-wearing
- Labels are also sold separately



> Seat Markers

SDS01



Label 1, White Disk and 1 Metre Black Cord

K8 CODE: 217A9563

SDS02



Label 2, White Disk and 1 Metre Black Cord

K8 CODE: 217A9585

SDS03



Label 3, White Disk and 1 Metre Black Cord

K8 CODE: 217A9586

SDS04



Label 4, White Disk and 1 Metre Black Cord

K8 CODE: 217A9587

Labels also sold separately



SDL01/14
SDL01/70



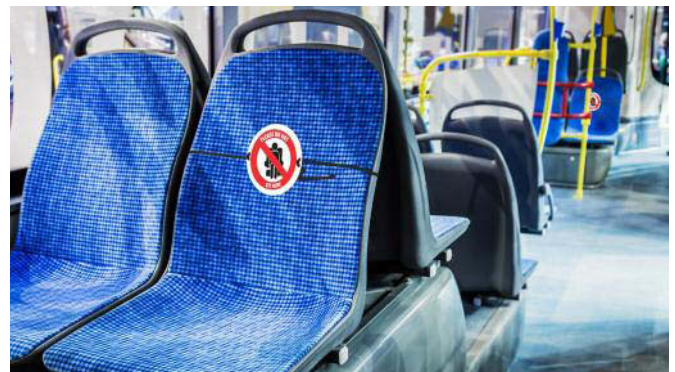
SDL02/14
SDL02/70



SDL03/14
SDL03/70



SDL04/14
SDL04/70



MODEL No.	K8 CODE	DESCRIPTION
SDL01/14	217A9564	SDL01/14 SOCIAL DISTANCE SEAT LABEL ONLY PACK 14
SDL02/14	217A9565	SDL02/14 SOCIAL DISTANCE SEAT LABEL ONLY PACK 14
SDL03/14	217A9566	SDL03/14 SOCIAL DISTANCE SEAT LABEL ONLY PACK 14
SDL04/14	217A9567	SDL04/14 SOCIAL DISTANCE SEAT LABEL ONLY PACK 14
SDL01/70	217A9568	SDL01/70 SOCIAL DISTANCE SEAT LABEL ONLY PACK 70
SDL02/70	217A9569	SDL02/70 SOCIAL DISTANCE SEAT LABEL ONLY PACK 70
SDL03/70	217A9570	SDL03/70 SOCIAL DISTANCE SEAT LABEL ONLY PACK 70
SDL04/70	217A9571	SDL04/70 SOCIAL DISTANCE SEAT LABEL ONLY PACK 70

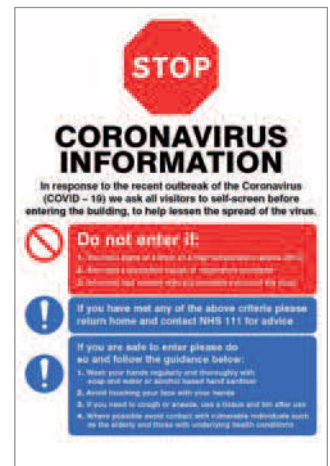
COVID-19 Signage: Information and Guidance



CALEDONIA-14997K
CALEDONIA-24997K
CALEDONIA-14997H
CALEDONIA-24997H
CALEDONIA-54997



CALEDONIA-55000



CALEDONIA-55021



CALEDONIA-15165H
CALEDONIA-25165H



CALEDONIA-14999H
CALEDONIA-14999K
CALEDONIA-24999H
CALEDONIA-24999K
CALEDONIA-54999

SNAP FRAME A-BOARD DOUBLE SIDED WITH 2x CORONAVIRUS POSTERS



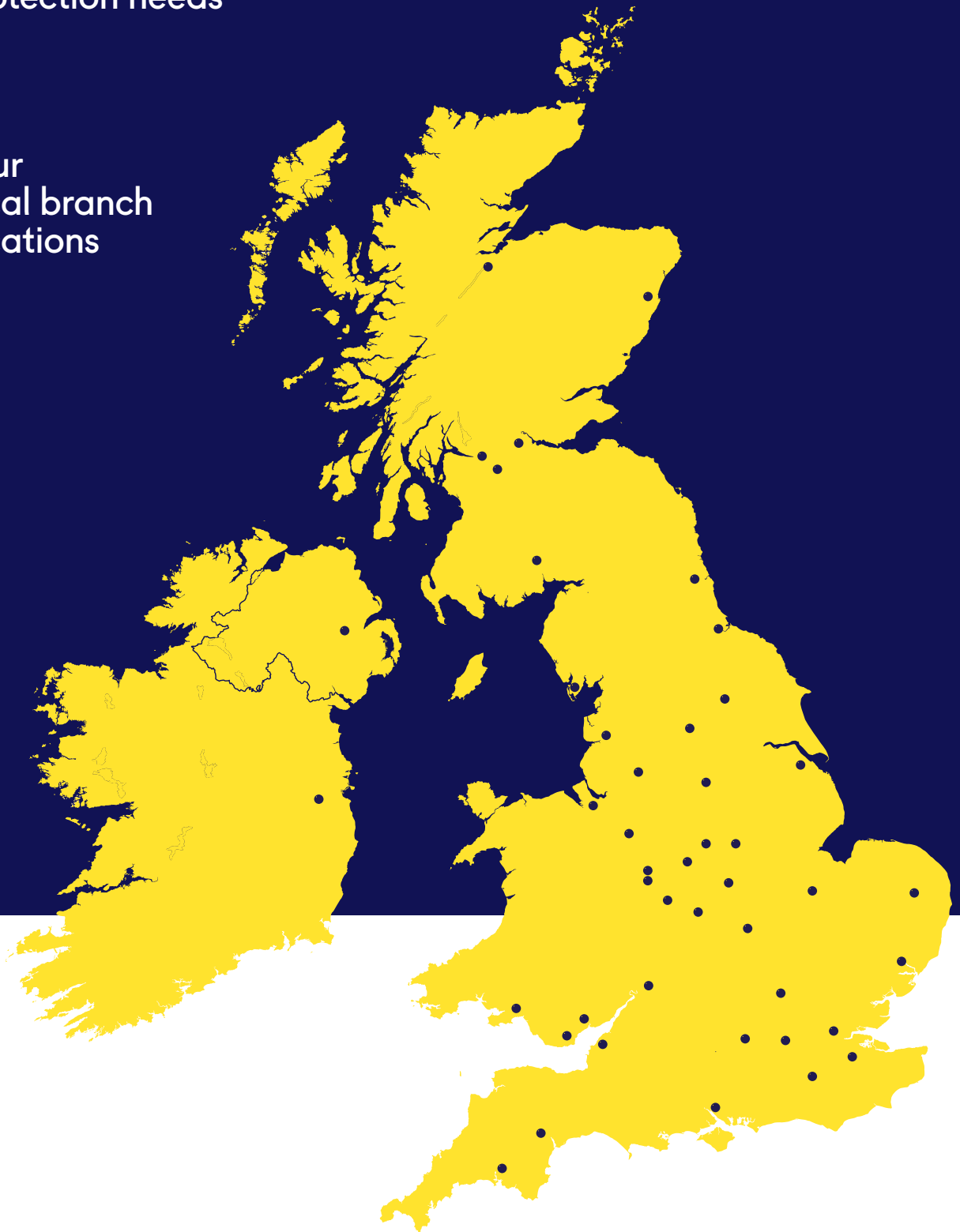
CALEDONIA-55168

K8 CODE	DESCRIPTION
219A3147	CALEDONIA SIGNS 14997K ATTENTION ALL VISITORS IN RESPONSE TO THE RECENT OUTBREAK OF THE CORONAVIRUS (400x300mm) 1: RIGID PLASTIC
219A3148	CALEDONIA SIGNS 24997K ATTENTION ALL VISITORS IN RESPONSE TO THE RECENT OUTBREAK OF THE CORONAVIRUS (400x300mm) 2: SELF ADHESIVE VINYL
219A3149	CALEDONIA SIGNS 14997H ATTENTION ALL VISITORS IN RESPONSE TO THE RECENT OUTBREAK OF THE CORONAVIRUS (300x250mm) 1: RIGID PLASTIC
219A3150	CALEDONIA SIGNS 24997H ATTENTION ALL VISITORS IN RESPONSE TO THE RECENT OUTBREAK OF THE CORONAVIRUS (300x250mm) 2: SELF ADHESIVE VINYL
219A3151	CALEDONIA SIGNS 54997 ATTENTION ALL VISITORS IN RESPONSE TO THE RECENT OUTBREAK OF THE CORONAVIRUS FLOOR GRAPHIC 600x400mm
219A3152	CALEDONIA SIGNS 14999H ATTENTION ALL STAFF AND VISITORS CATCH IT, BIN IT, KILL IT FLOOR GRAPHIC 400x600mm (300x250mm) 1: RIGID PLASTIC
219A3153	CALEDONIA SIGNS 14999K ATTENTION ALL STAFF AND VISITORS CATCH IT, BIN IT, KILL IT FLOOR GRAPHIC 400x600mm (400x300mm) 1: RIGID PLASTIC
219A3154	CALEDONIA SIGNS 24999H ATTENTION ALL STAFF AND VISITORS CATCH IT, BIN IT, KILL IT FLOOR GRAPHIC 400x600mm (300x250mm) 2: SELF ADHESIVE VINYL
219A3155	CALEDONIA SIGNS 24999K ATTENTION ALL STAFF AND VISITORS CATCH IT, BIN IT, KILL IT FLOOR GRAPHIC 400x600mm (400x300mm) 2: SELF ADHESIVE VINYL
219A3156	CALEDONIA SIGNS 54999 ATTENTION ALL STAFF AND VISITORS CATCH IT, BIN IT, KILL IT FLOOR GRAPHIC 400x600mm (400x600mm)
219A3157	CALEDONIA SIGNS 55000 CORONAVIRUS HELP STOP THE SPREAD POSTER 420x594mm SYNTHETIC PAPER (420x594mm)
219A3158	CALEDONIA SIGNS 55021 STOP ATTENTION ALL VISITORS IN RESPONSE TO THE RECENT OUTBREAK OF THE CORONAVIRUS POSTER 420x594mm SYNTHETIC PAPER
219A3159	CALEDONIA SIGNS 15165H BUSINESS OPEN PLEASE FOLLOW NHS GUIDELINES (300x250mm) 1: RIGID PLASTIC
219A3160	CALEDONIA SIGNS 25165H BUSINESS OPEN PLEASE FOLLOW NHS GUIDELINES (300x250mm) 2: SELF ADHESIVE VINYL
219A3161	CALEDONIA SIGNS 55168 SNAP FRAME A-BOARD DOUBLE SIDED WITH 2X CORONAVIRUS POSTERS (420x594mm) (680x940x465mm)



Your trusted
partner for your
protection needs

Your
local branch
locations



Contact your local branch
to find out more about our
products and services

0870 240 2100

uk.rubix.com

**Brammer
Buck &
Hickman**

Powered by
RUBIX