

Brammer
Buck &
Hickman

> part of
your
success.

Powered by
RUBIX

developing constructive
partnerships with the
building products
industry >

quality for building products



At Brammer Buck & Hickman we have extensive experience of working with some of the biggest names in building products. All across the UK, many businesses in the industry choose us for their industrial supplies and services because of our specific sector expertise.

Our vast experience means that we are able to better understand the unique needs that relate to your business and production processes.

We understand how important issues like availability, health & safety and energy conservation affect your business. We also understand what impact these issues have on your requirements and how we can apply our expertise in your industry to provide you with the best parts, products and support.

For example, we know how operating conditions can have a big impact on your production lines, such as wet and dusty conditions, vibration and extreme temperatures.

We also understand that heavy loads require the application of very high quality parts, and how in your drive for optimal energy efficiency, you want to find the most efficient products for your process.

We know that there are key issues that can impact the parts you use in your production:

- Availability
- Health & Safety
- Downtime
- Energy Conservation
- OEE
- Market Conditions

For businesses with a need to keep production lines running 24/7/365, always having the right part at the right time is vital – and we're here to help.



When work requires a specialist, look no further than our workshop services

Brammer Buck & Hickman operates four specialist engineering workshop centres. These engineering centres of excellence help minimise repair downtime thanks to the unrivalled levels of knowledge and engineering skill made available to all our customers – all geared towards saving you money. All work is quality assured (ISO 9001:2015, and fully accredited by the BFPA) and is carried out to the manufacturer's original specifications using genuine spares.

We're your specialists for:

- Gearbox repairs – we'll find the most cost-effective solution: repair, recondition or recommend a new unit
- Condition monitoring services
- CNC machining for one-offs or emergency replacements
- Customised chain cutting
- Pump repair and maintenance
- Kitting – bespoke tool kits to your exact specification

All the parts, all the protection

Site safety is paramount – a protected team is a productive team. As part of our services we offer one of the UK's most comprehensive, compliant PPE clothing and equipment ranges to keep everyone working safely.

Plus we also provide a bespoke branded workwear solution for your workforce.



a heavyweight team ready to add tons of value to your business

Working with Brammer Buck & Hickman goes a lot further than simply delivering the right part at the right price at the right time.

We understand the pressures you face in relation to driving down costs while optimising production efficiency. This means that we can:

- Use our sourcing expertise and substantial international buying power to reduce your acquisition costs through OEM conversion
- Offer you the option of alternative quality branded parts, or suggest alternative products where appropriate
- Improve production line efficiencies through innovation, performance measurement and condition monitoring
- Promote best practice in industrial supplies management and even provide you with services within your plant
- Streamline and consolidate invoicing for more efficient purchasing processes
- Provide you with a dedicated, experienced resource with all the benefits of our huge buying power right where you need it – on your site
- Standardise your purchases and rationalise your choice of suppliers with our Vendor Managed Services; even getting suppliers to hold and manage inventory on your behalf, providing consignment stock where appropriate
- Profile stock holding against critical needs to eliminate over or under stocking
- Reduce costs in purchasing and invoicing through e-Commerce solutions including an Online Procurement Manager and EDI integration where possible

And all of this, of course, works like you do, 24/7/365



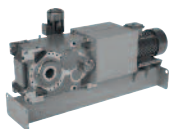
parts, products and services for the building products industry

Power Transmission and Fluid Power Products



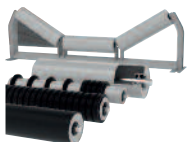
Submersible Contractor Pump

- Integrated on/off switch for automatic start and stop
- Heavy-duty, greased-for-life ball bearings
- Double shaft seal system, with intermediate oil chamber
- High alloyed cast iron (600HV) semi-open impeller
- Wear-resistant nitrile rubber diffuser and impeller back plate
- Rubber lined water channels where water velocity is at its highest



Industrial Gear Unit

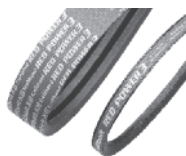
- Powerful – up to 250,000Nm
- Robust – high precision, rigidity and strength
- High torque from a compact size to fit in the footprint of existing units
- Long service life and low noise
- Flexible – numerous options



Rollers and Conveying

Rollers, idler sets and garlands comply with:

- ATEX 94/9/EC Directive
- Ex Group I Category M2 (for Mines)
- Ex Group II Category 2G (for Gas) and 2D (for Dust)
- Ex Group II Category 3G (for Gas) and 3D (for Dust)



High Power Belt

- High load carrying capacity
- Double fabric provides abrasion and wear resistance
- Shock, stretch, heat and oil resistant



Chain

- Link design improves fatigue resistance
- Able to withstand shock and heavy loads
- Controlled position of pin and bushing provides even wear



Seals and Gaskets

Wide range of sealing products and gasket materials:

- "O" Rings
- Rotary Shaft Seals (Oil Seals)
- Hydraulic/Pneumatic Seals
- Soft Cut Gaskets
- Metallic Gaskets
- Pump and Valve Packings
- Mechanical Seals
- Gasket and Seals Kits



Couplings

- Robust
- Reduced maintenance costs and downtime
- Application related design



Heavy Duty Crank Link Drive Chain

- Heat treated for maximum strength and integrity extends service life of the chain
- Increased bush wall thickness accommodates increased bearing pressures
- Grease facility through pin to allow introduction of lubrication into critical areas
- Anti-rotation flat to provide positive mechanical retention to pin



Pneumatic Cylinders with Scraper Nose Seals

- Suitable for harsh environments
- Also available with a modular sealing system – easy to replace in situ reducing downtime
- Sealing technology withstands dirt, extreme temperatures and chemicals



Hydraulic Solenoid Operated Directional Control Valves

- High working pressure
- High flow rates
- Low pressure drop
- With wet type solenoids, these valves ensure low noise and long life



Cast Iron Motor

- Solid and integrated feet for easier installation and alignment
- Reduced noise and vibration with lower energy consumption
- Reduced temperature on windings and bearings

work with us and take a load off your mind

Here is just one typical example of how we apply our specialist expertise to help companies in the building products sector across the UK every day.

We worked closely with our customer, a building insulation manufacturer, to solve their issue of constant downtime.

Our team of experts introduced a Russell Finex self-cleaning eco filter to filter out debris in the paint used to paint insulation slabs before it enters the system, which was continually becoming blocked and stopping production lines.

This highly effective solution has helped keep production running and also dramatically reduced maintenance costs, saving the customer an estimated saving of over £266,000.

Tools and Personal Protective Equipment



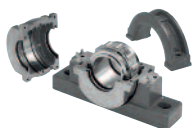
Spherical Roller Bearing Solid Block Housed Unit

- Solid cast steel housing with machined feet for maximised strength and one time alignment
- Completely sealed unit, with integrated fixed and float capability for quick and easy installation
- Six primary seal options, sealed on an extended inner ring provides maximum grease retention and minimised ingress of contamination



Self Lube – Triple Lip Seal Bearing

- Nitrile rubber triple lip seal bonded to protective pressed steel shield designed to stop ingress of contamination, maximising bearing life, for applications exposed to heavy dust and water contamination
- Extended relubrication intervals, reduced maintenance costs and increased productivity of machinery
- Interchangeable with standard self lube units, no extra time or machining costs and ready replacement for existing bearing units



Split Cylindrical Roller Bearing

- Totally split to the shaft arrangement allowing quick and easy installation and minimised downtime
- Externally self aligning – seals remain concentric to shaft extending bearing life in highly contaminated environments
- Angled support pedestals available for easier initial installation in space restricted applications or 'trapped' locations



Medium Weight Gloves

- Nitrile Foam/Waterbased PU Palm-dipped glove
- Withstands heat up to 100 degrees
- Prevents risks of scratches, lacerations, blisters, grazes, drying out, chapping, contact with dirt, abrasion injuries
- Designed for use in dirty, dry and moist environments



Tools at Height/Tethered Tooling

- Designed with a safety lock system for improved safety so tools aren't dropped at height causing potential injuries or damage
- Increased productivity with less time wasted trying to locate or recover dropped tools
- Improved savings, reduces the need to replace damaged tools



Gritty Power Foam Hand Cleaner

- Solvent-free foam hand cleaner with natural scrubbers for heavy industrial use
- Contains moisturisers to help prevent dryness
- Provides 43% more hand washes than traditional heavy duty hand cleansers
- Economical formula with only one shot required EU Ecolabel certified



Tool Control Systems

- See at a glance all tools are available for full accountability
- Our on-site tool audits assess tool sequences keeping you organised
- Reduces time wasted searching for the right tool
- World leading brands including Roebuck
- Laser etching available for total personalisation of tools
- Chemical/oil/dirt resistance foam in-lays

working
safely
on site

There's no compromise on health and safety in the workplace which is why Brammer Buck & Hickman stocks a wide choice of protective clothing, equipment, hygiene products and workplace signage to keep you and your employees comfortable and safe as well as productive.

We deliver a complete head-to-toe solution for fully-compliant high-quality personal protective equipment – all designed to fit safely within your budgets too.



GISS safety products have been designed to deliver a level of quality, comfortable fit and protection as good as the leading brands, so you can have confidence that you can improve your business' profitability without compromising on the safety and wellbeing of your most important assets.

GISS achieves this through a comprehensive range of head to toe safety products all certified against demanding European specifications. They are exclusive to Brammer Buck & Hickman in the UK and backed up by RUBIX, Europe's leading supplier of industrial services and products. When it comes to safety, GISS never compromises.



Site Safety expertise

We can help you avoid the top 5 common themes for site safety. Did you know 94% of fatalities in the industry fall within these 6 common themes:

- 22 % of injuries are the result of contact with moving machinery and failure to isolate sources of energy – our teams can provide advice on clear signage and guards on machinery
- 19% of fatalities in the industry involve workplace transport, often involving contact with pedestrians. Making sure the correct site safety is in place with correct PPE and signage works
- 17% of fatalities in the industry involve a fall from height. Discover the latest tool tethering and working at height solutions available
- Longterm exposure to silica particles, resulting in respiratory disease. Extraction solutions and the use of the effective RPE is critical to reducing exposure
- 31% of fatalities in the industry are associated with individuals being struck by moving or falling objects. Get updated on the latest PPE equipment and protective head and eyewear from our PPE specialists

Brands you can trust



tough
conditions
need robust
tools

Hand tools, machine tools, abrasives, adhesives... we hold over 13,000 tool products in stock from all the major brands including Roebuck, 3M, Lenox, Honeywell, Brady, Rocol, Bahco, Stanley, Irwin, Bosch and many more.

From cordless and precision multi-tools to grinders, generators and compressors, we've got the right tool for every application, with tool storage and all the advice you need too.

We are also exclusive suppliers of Roebuck professional tools, specifically designed for users working in demanding manufacturing and industrial environments.

Brands you can trust

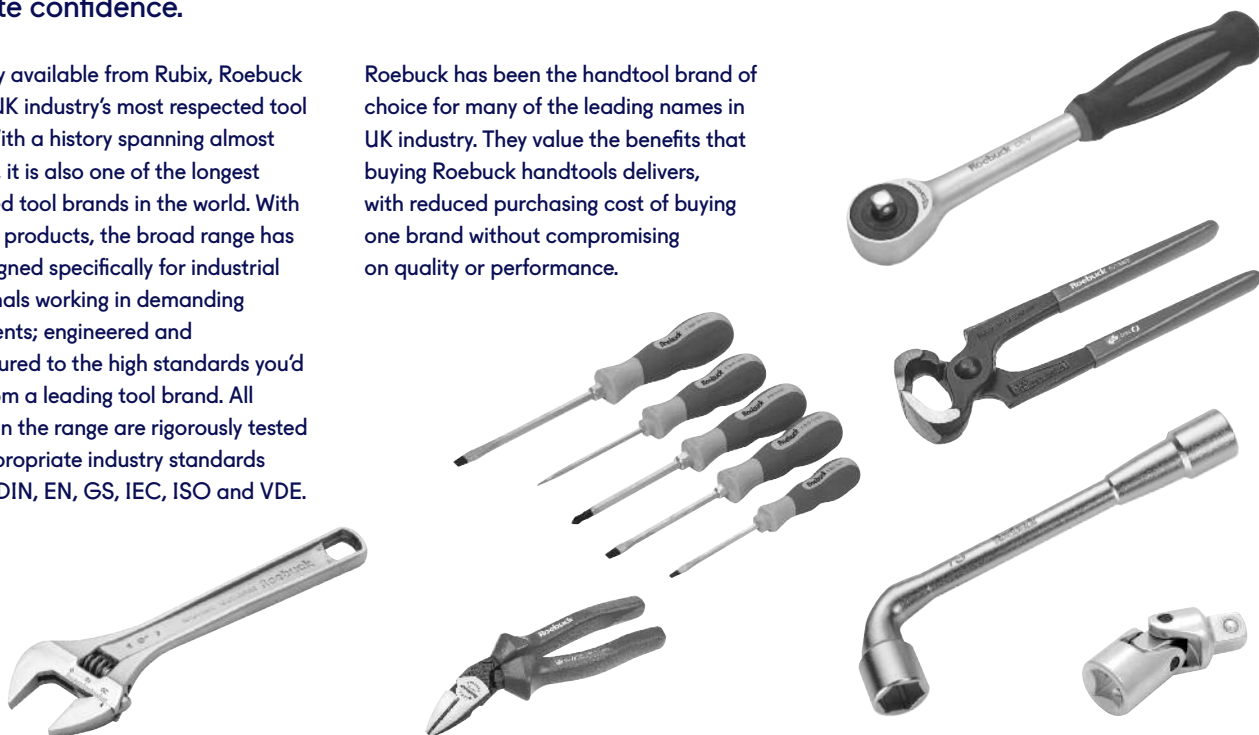


All the quality without the cost

Built to the same high specification – or often better – than the branded alternative, but without the high cost, the Roebuck range is backed by a Lifetime Warranty* so you can buy with absolute confidence.

Exclusively available from Rubix, Roebuck is one of UK industry's most respected tool brands. With a history spanning almost 150 years, it is also one of the longest established tool brands in the world. With over 1400 products, the broad range has been designed specifically for industrial professionals working in demanding environments; engineered and manufactured to the high standards you'd expect from a leading tool brand. All products in the range are rigorously tested to the appropriate industry standards including DIN, EN, GS, IEC, ISO and VDE.

Roebuck has been the handtool brand of choice for many of the leading names in UK industry. They value the benefits that buying Roebuck handtools delivers, with reduced purchasing cost of buying one brand without compromising on quality or performance.



bearing

the

load

Every year we sell over 25 million bearings from the largest, most comprehensive bearings range and stock. Our product knowledge and technical support is second to none, and advice is available to all customers at any time from our expert design and engineering specialists. Our expertise has delivered over £10 million in bearing cost savings to businesses over 10 years.

The expertise you can only get from an authorised distributor

As an authorised distributor, we've built up a huge amount of knowledge and technical expertise having worked with leading manufacturers for years. This includes any specific bearing advice or guidance you may need – and we can work directly with our manufacturer's technicians to provide brand specific technical solutions if necessary.

SECTOR	BEARING PRODUCT SOLUTION			
Aggregates	Split Cylindrical Roller Bearing	Vibratory Screen Spherical Roller Bearings	Spherical Roller Bearing Solid Block Housed Unit	Three Barrier Solution – Plummer Block Housings
Cement	Split Cylindrical Roller Bearing	Sealed Spherical Roller Bearing	Spherical Roller Bearing Solid Block Housed Unit	Self Lube – Triple Lip Seal Bearing
Building Products	Split Cylindrical Roller Bearing	Spherical Roller Bearing Solid Block Housed Unit	Sealed Spherical Roller Bearing	Self Lube – Triple Lip Seal Bearing



Split Cylindrical Roller Bearing

- Totally split to the shaft arrangement allowing quick and easy installation and minimised downtime
- Externally Self Aligning – seals remain concentric to shaft extending bearing life in highly contaminated environments
- Angled Support Pedestals available for easier initial installation in space restricted applications or ‘trapped’ locations



Vibratory Screen Spherical Roller Bearings

- Bearings designed specifically to withstand high loads, misalignment and vibration
- Increased service life of standard Spherical Roller Bearing based on robust bearing designs and materials
- A superior balance between hardness and toughness enables up to twice the life in leading market brands
- Excellent wear resistance, reduced noise and vibrations levels give improved reliability and increased uptime



Spherical Roller Bearing Solid Block Housed Unit

- Solid cast steel housing with machined feet for maximised strength and one time alignment
- Completely sealed unit, with integrated fixed and float capability for quick and easy installation
- Six primary seal options, sealed on an extended inner ring provides maximum grease retention and minimised ingress of contamination



Three Barrier Solution – SNL Plummer Block Housing

- Cost effective solution consisting of Bearing Housing, labyrinth S seals (or Taconite seals for ultimate protection) and a specially formulated lubricant to act as contamination barrier
- Featuring a sealed Explorer Spherical Roller Bearing it delivers superior operating performance that lasts significantly longer in contaminated environments
- Integral bearing seals keep bearing quality lubricant within the bearing and act as an extra line of defence against contaminants entering the bearing cavity



Sealed Spherical Roller Bearing

- Designed specifically to withstand high loads and misalignment
- Designed to increase bearing service life and production uptime in contaminated environments
- Reduced grease consumption and maintenance intervals
- Help to improve safety, lower costs and reduce environmental risks

Brands you can trust

We're the only pan European distributor of all the top bearing manufacturers

NSK

SKF

SCHAEFFLER

TIMKEN

NTN

CASE STUDY:

Bearing up to tough conditions: Timken' Solid Steel Housed Bearing

A site visit uncovered that the bearing used on the hopper tail drum for a conveyor were being replaced every 5 to 6 weeks. The team from Brammer Buck & Hickman and their supplier Timken discovered that sand was building up around the bearing, which was wearing away the bearing's seals causing contaminant to get in. This led to the bearing's lubrication being compromised which resulted in the failure. The frequent bearing changes were also damaging the shaft as the bearing inner races were cold welding to the shaft.

Our experts recommended Timken's Solid Steel Housed bearing DVP15K208SO (tapered lock) suitable for the limited space available to accommodate an eccentric lock. The bearing with their triple lip, high abrasion resistant urethane seal and the option to add end covers as a secondary barrier were lubricated with a suitable grease to add an extra layer of protection.

Taking into account the initial install costs this has saved the site **£1,729**



power

transmission

you can

trust

With over 7,000 product lines always in stock plus custom cutting capabilities, Brammer Buck & Hickman delivers complete drive chain and belt solutions.

Working with the world's leading manufacturers, including Gates, Renold, Optibelt, Mecaline and Tsubaki, we can help you minimise downtime, extend the period between planned maintenance, improve performance all round, and help to reduce your energy consumption.

With a comprehensive range of product lines from the world's leading brands, including Siemens and WEG, we are the UK's largest single-source supplier of motor and drive packages. Brammer Buck & Hickman will keep your production lines moving and running at their most efficient.



Brands you can trust



Best in class expertise for the Building Products Industry



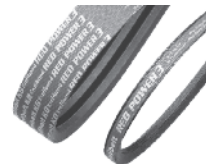
Heavy Duty Crank Link Drive Chains

- Heat treated for maximum strength and durability
- Increase bush wall thickness to accommodate increased bearing pressure
- Anti-rotation flat pins for positive mechanical retention of pins



Heavy Duty Robust Couplings

- Raise the performance of power transmission systems
- Shaft couplings to compensate misalignment
- Couplings to suit a wide range of applications
- HRC, shaft, Jaw and Tyre options



High Performance, High Power Belts

- Maintenance free
- Up to 50% more power
- Up to 97% efficiency
- Increased temperature range - 40°C – +100°C
- Drop in replacement
- SPZ, SPA, SPB, SPC, 3V, 5V, 8V and Kraftbands
- Lengths = 1200mm – 10,000mm
- UK stock



High Durability Roller Chain

- Deep waisted side plates for improved wear resistance
- Solid extruded bushes for improved wear resistance
- Triple punched holes for high accuracy and improved wear resistance
- Special pin profile and surface coating to improve wear resistance



The range combines quality and reliability backed by our extensive engineering expertise and services. Designed in collaboration with world-leading manufacturers in their respective fields, to very strict specifications, the Mecaline range features electric motors, gearboxes, chain drives, belts, couplings and a full range of ironware. Mecaline is exclusively available from Brammer Buck & Hickman in the UK providing power transmission you can trust.



CASE STUDY:

High Power, Maintenance Free Belt for Toughest Conditions

A customer in the aggregates sector was operating a tough crusher drive with a set of four belts which required re-tensioning every two months and had a lifetime of only 12 months. Engineers recommended replacing them with a set of Optibelt Red Power 3 belts which, after approximately five years, were still operating in good condition and had required no re-tensioning during the entire time.

Furthermore, the customer also measured an average 5% reduction in power consumption since switching to the Red Power 3 belts. The customer calculated total cost savings of £9,000 every four years including belt costs, maintenance and energy savings.

Total cost savings of **£9,000** every four years



first for fluid power

Hydraulics, Pneumatics, Process Valves & Pumps, including Filtration – across these specialist fluid power product categories we offer over 1 million individual lines from the world's leading manufacturers.

Such a huge range needs specialists to ensure customers receive the right advice, and Brammer Buck & Hickman's technical team is simply outstanding, able to provide on-site support and engineering solutions to

improve production efficiency. We'll help reduce your maintenance needs, increase your productivity, assist with energy efficiency audits and advise on possible product re-specifications.



Cost of generation per m³

1p-3p



Amount of compressed air wasted or used

30%



Cost saving for reducing pressure drop by 1 bar

7-10%

Pneumatics

Generating compressed air is an expensive business. Up to 73% of the total cost of ownership of compressed air installations can be attributed to the cost of energy consumed by the compressor and ancillary equipment over a ten-year period.

With decades of experience in this field, our fluid power team has gathered plentiful tips on money and energy savings that can be readily implemented by customers – small changes

that can have a big impact. We empower customers to identify these and make those changes through our Pneumatics training workshops.

Brands you can trust



High-quality, high-performance Pneumatics

GISS

The GISS range is made up of high-quality, high performance pneumatic parts and accessories, designed to deliver production efficiencies and reduce your working capital.

EXPERTISE FOR EVERY INDUSTRY

The range is exclusively available in the UK from Rubix, the leading industrial supplies specialist in Europe.

As well as the parts we pride ourselves on keeping your operation moving by offering specialist services, so you can focus on your business while we handle design, installation, alterations and more. Our product knowledge, sector-specific engineering expertise and a close working relationship with the brands we supply puts us in the best possible position to be able to reduce your acquisition costs, help make your production more efficient and reduce your working capital.

THE GISS PNEUMATICS RANGE

RANGE INCLUDES:

- Pneumatics fittings
- Tubing and hoses
- Couplings
- Air blow guns
- Valves and accessories
- Silencers
- Gauges

PNEUMATICS FITTINGS

with more than 2000 products to choose from:

- Push-in
- Push-on
- Threaded
- Functional
- Compression
- Technopolymer
- Stainless Steel
- Nickel Plated
- Brass



NEW

GISS Bi-Polymer Tubing Combining polyurethane and polyamide this flexible tubing provides:

- Excellent pressure resistance
- Extreme flexibility to remove risk of kinking
- Excellent resistance to abrasion, tearing, cuts and perforation
- Good resistance to hydrolysis
- Good chemical resistance

Silencers reduce contamination

Use a silencer in every port open to atmosphere to protect machinery and increase mean time between failure. Even if you have air preparation on site particles of dirt can still enter a valve by the exhaust port. This causes excess seal wear and premature failure, not just in the valve but on every component, all the way round the pneumatic circuit connected to the valve.

CASE STUDY:

Upgraded hydraulic power unit increases production output

An aggregates producer asked for help to upgrade their hydraulic power unit to help them increase production output. Working with Parker Hannifin, Brammer Buck & Hickman recommended a custom built solution to increase pressure and flow rate. They also suggested that repositioning the new pump away from the hopper would keep the new hydraulic power unit clean, dry, and temperature-controlled,

helping to maintain viscosity. The new position simplified maintenance as the power unit did not have to be dug out of aggregate dust by hand – saving time, prolonging equipment life and preventing contamination, as well as making maintenance safer. The hydraulic power unit could be controlled remotely for instant speed variation, and pre-warns operators of potential low oil levels or overheating

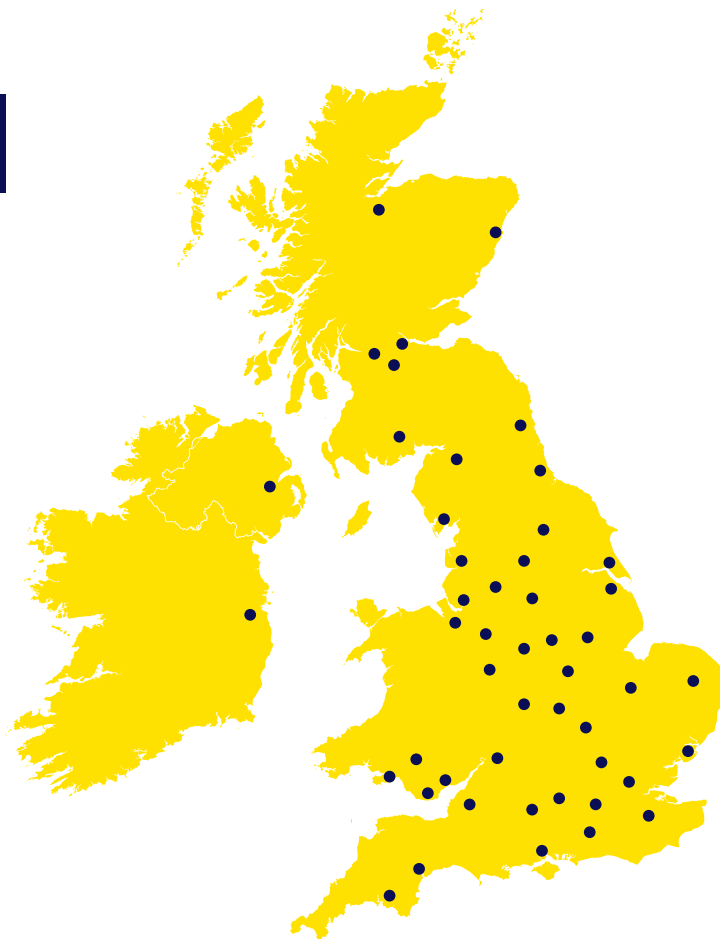


making maintenance planning far easier. The new system increased production output by 20% and significantly reduced downtime.

Increased production output by **20%**

we've got the building products industry covered

On both national and local levels, Brammer Buck & Hickman offers a comprehensive range of products and services to support the maintenance, repair and on-going operations of production machinery – keeping industry moving and running at optimum efficiency.



Our customers are buyers, engineers and plant managers who need the right product at the right time, and at the right price. They also want the kind of technical support that only true specialists can provide to make positive impacts on their businesses in terms of production efficiencies and significant cost reductions.

We offer more than 5 million different product lines – 500,000 of which are in stock at any one time, all available 24 hours a day, 365 days a year. Via our centrally-located National Distribution Centre in the Midlands, plus a network of branches across the UK, we'll get it to you on time, every time.

In addition we operate on-site at more than 200 customers' businesses – including full dedicated bespoke branches at over 100 customer Insite™ locations.

Larger customers with multi-site operations throughout the UK are provided with a dedicated Key Account service to add real value to your maintenance operations, to ensure that all aspects of a national agreement are implemented successfully across all sites, and that service level commitments are fully met.

With our specialist expertise, international strength and local presence – combined with our thorough understanding of the aggregates industry – we are ready to become your parts and products partner.

Brammer Buck & Hickman
National Distribution Centre
Headway Road
Wolverhampton
WV10 6PZ

☎ 0870 240 2100

☎ 08450 510 150

uk.rubix.com

**Brammer
Buck &
Hickman**

Powered by
RUBIX