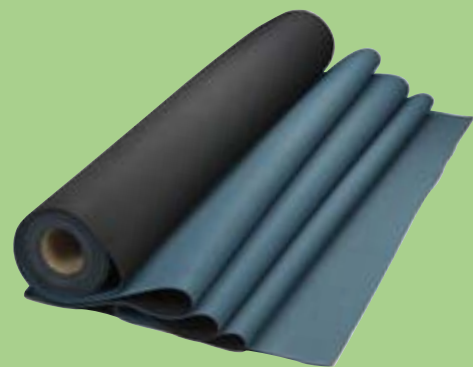
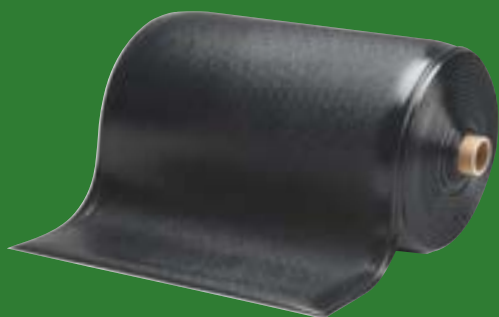
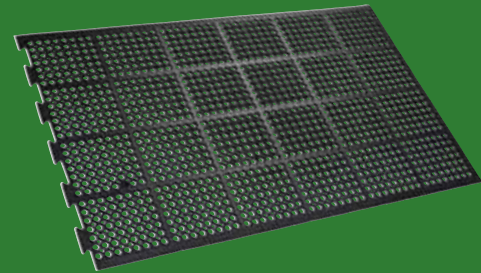
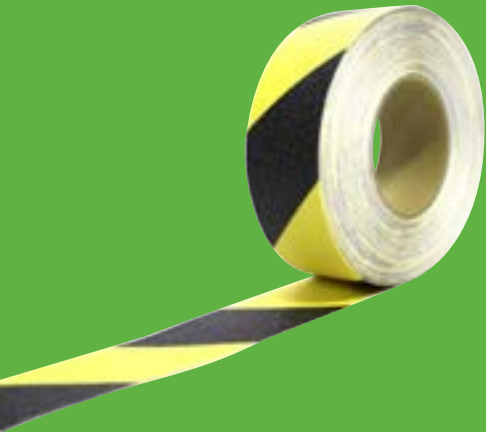
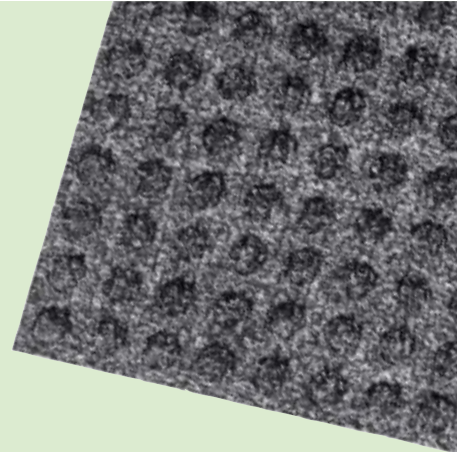
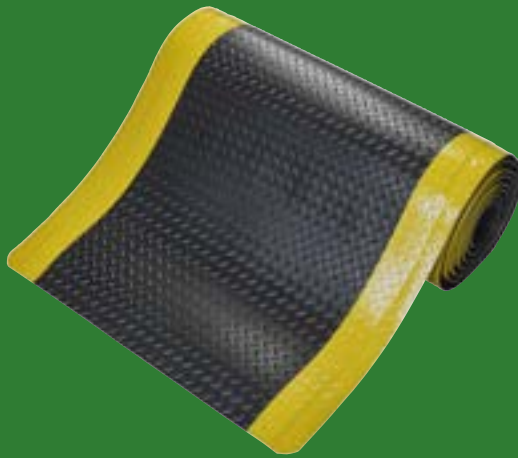


# Spartex

## Floor Level Safety Products





## THE ESSENTIAL CHOICE FOR FLOOR LEVEL SAFETY

Many workers have to stand for a long time in all sorts of industries, which if unchecked, can have a negative impact on overall health. If you don't have the right floor level safety solutions in place, it can have a huge impact on both wellbeing and productivity. Anti-fatigue mats are a great way to protect employees, increase productivity, and even reduce absenteeism.

**Over 45% of European workers complain about standing in tiring positions at work.**

Equally, other floor level hazards such as slips and trips or electric shocks, present businesses with an ever-present challenge to operations, their employees, and costs billions each year.

The good news is that SPARTEX can provide floor level safety solutions that combat these hazards and are suited to a wide variety of working environments. Our floor levels safety range includes everything from anti-fatigue mats, non-slip tape, and entrance mats.

## THE HIGHEST LEVELS OF QUALITY

The Spartex floor level safety range has been created with the goal of providing customers with one of the most diverse and comprehensive ranges available on the market. All products are carefully manufactured to ensure the highest levels of quality, performance and reliability. No matter what your floor level safety requirements, we have a product to meet those needs.

### WHY CHOOSE US?

Our products are tested to a range of standards for slip resistance, fire retardancy and electrical resistivity. These include BS 7976-2, BS EN 13501-1, DIN 51907, DIN 51130 and BSEN 61111.\*

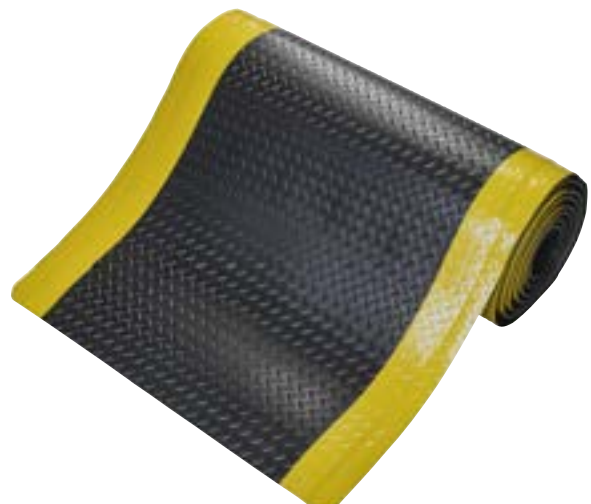
- All floor level safety products are manufactured to BS EN ISO 9001:2015 quality standards
- We provide immediate supply of the best quality and most cost-effective floor level safety products in the marketplace

\*please check the individual technical specifications of each product.

### SUPPORT

The Spartex range of floor level safety products also come with a range of support services. These ensure that the client receives market leading support to help them achieve their health and safety goals.

- Technical Support
- Site Surveys
- Virtual site visits



# THE RISKS OF PROLONGED STANDING

Prolonged standing can lead to fatigue, pain and serious health issues, such as MSDs.



## What are MSDs?

**Musculoskeletal Disorders** are injuries or conditions affecting the movement of the human body, or the **loco-motor apparatus**. They are problems that affect the muscles, tendons, ligaments, vascular system, nerves, soft tissues, bones and joints.



MSDs are currently the most common work-related condition in the EU. They are expected to affect some

**50%**

of the population by **2030.\***

**14** days

Average time lost due to each MSD case



Over **45%**

of European workers complain of standing in tiring positions at work.

**6.6** million

Working days lost due to MSD\*\*



**Anti-Fatigue Matting** • is Scientifically proven to reduce discomfort and fatigue.

## CHOOSING THE RIGHT MAT MATTERS

There is a suitable tool for every task. If you don't have the right tool, it can affect the quality of your work and incur additional costs for your business.

Business owners, health and safety officers and production managers are all responsible for the health and safety of employees in the workplace. However, without a clear understanding of how different substances affect different materials, the effects of employee movements on mat wear or other important conditions, choosing the most suitable workplace mat becomes a challenge.

Our team of mat experts has first-hand experience in solving real-world problems in the industry. Added to this experience is the comprehensive training that SPARTEX provides to its employees to ensure that customers receive the best possible advice. We are committed to always offer the most suitable product for your workplace, based on the facts at hand, not the most expensive.

## Workplace safety matting key

Workplace safety matting products offer numerous benefits from fatigue relief, to slip, fire or electrical resistance. With many industries using oils and chemicals daily, it is also important to ensure mats have the right level of durability and resistance for each particular workplace.

Use the key opposite to determine whether each product has the right features for the workplace in question. Consider whether people are moving around vs standing, and the impact this will have on wear and tear. As above, also consider whether the mat needs to be oil resistant or have a high comfort factor for users stood in static positions all day.



### COMFORT FACTOR

We grade the comfort level of our workplace mats from 1-5. A higher score represents better levels of comfort when standing for extended periods.



### WEAR RATING

We grade the durability of our workplace mats from 1-5 based on several factors from material to thickness. A higher score represents a more hard-wearing product.



### SLIP RATING

We grade the slip rating of our workplace mats from 1-5 based primarily on the results of slip testing. A higher score represents better slip resistance.



### SUITABLE FOR WET ENVIRONMENTS

This product is suitable for use in areas regularly exposed to water.



### SUITABLE FOR OILY ENVIRONMENTS

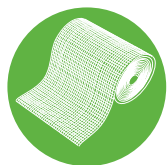
This product has a level of oil resistance that make it more suitable for engineering workshops or catering locations.



### FIRE TESTED

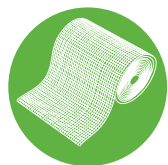
This product has been tested to BS EN 13501-1. Please ask for a copy of the certificate if required.

## Contents



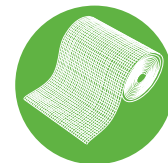
**Foam Mats  
For Dry Areas**

..... p7



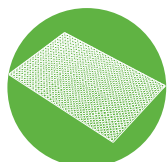
**Dual Layer Mats**

..... p12



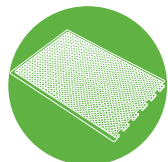
**Rubber Floor Mats  
For Dry Areas**

..... p14



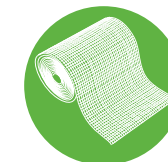
**Rubber Floor Mats  
For Wet Areas**

..... p15



**Interlocking  
Rubber Mats**

..... p18



**Rubber and  
Vinyl Runners**

..... p20



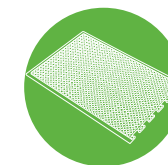
**Electrical Insulation  
Matting**

..... p22



**ESD Matting**

..... p24



**Interlocking  
Floor Tiles**

..... p26



**Site Safety Matting**

..... p28



**Floor Tape**

..... p29

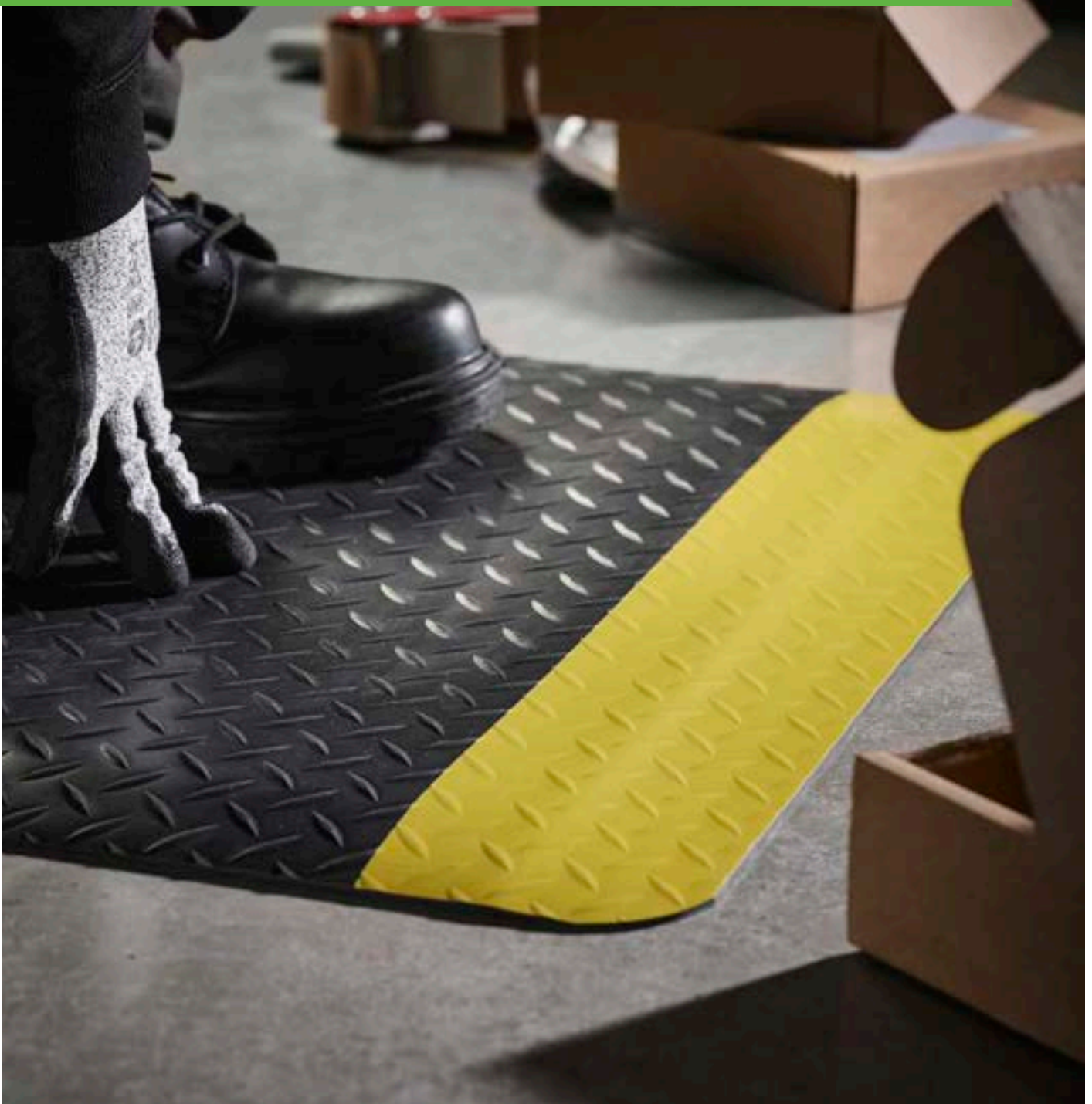


**Tack Mats**

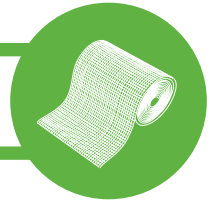
..... p30

# WORKPLACE SAFETY MATTING

SPARTEX is a trusted supplier of many business products and today we offer a comprehensive range of workplace safety mats for every working environment, whether that's industrial, catering or retail. Whether the main objective is to reduce the risk of slips or to provide fatigue relief from standing, we have a solution to suit a wide variety of budgets and environments.






# FOAM MATS FOR DRY AREAS



## Spartex Comfort Light Anti Fatigue matting



**Typical Applications**  
 Production lines, Assembly areas,  
 Packing stations, Workbenches

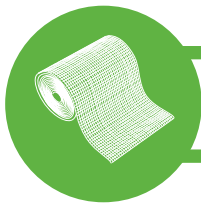
---

**Material**  
 Open Cell PVC (Foam)



- Cost effective anti-fatigue matting for when price is important, or traffic is light.
- Provides relief from fatigue caused by standing at work.
- Insulates workers against cold concrete floors.
- Ideal for light use in dry industrial environments.
- Lightweight, so easy to transport and reposition.
- Product height: 6 mm

Order code	Width	Length
239A9424	0.9 m	1.5m
239A9425	0.9 m	1.82m



# FOAM MATS FOR DRY AREAS

## Spartex Comfort Anti Fatigue Matting

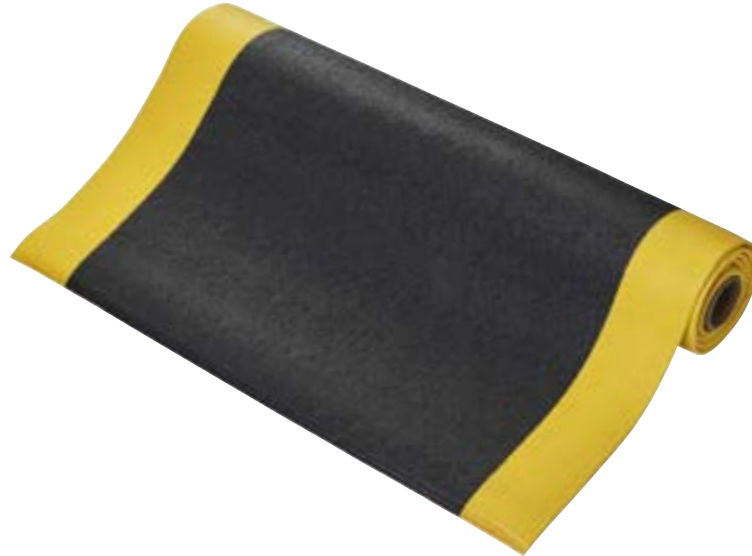


### Typical Applications

Production lines, Assembly areas,  
Packing stations, Workbenches

### Material

Open Cell PVC (Foam)



- Versatile single layer foam anti-fatigue mat. • Insulates standing workers against the effects of cold concrete floors. • Lightweight, so easy to transport and reposition.
- Best suited to dry environments. • High visibility version available with bright yellow borders. • Ideal for lighter industrial use. • Textured surface provides attractive appearance. • Available in mats and rolls. • Fire tested to BS EN 13501-1. • Product height: 9.5 mm

### Order code

Black	Black/Yellow	Width	Length
239A9395	239A9399	0.6 m	0.9m
239A9396	239A9400	0.9 m	1.5m
239A9397	239A9401	0.9 m	18.3m
239A9398	239A9402	0.9 m	per linear metre

## Spartex Comfort Dot Anti Fatigue matting

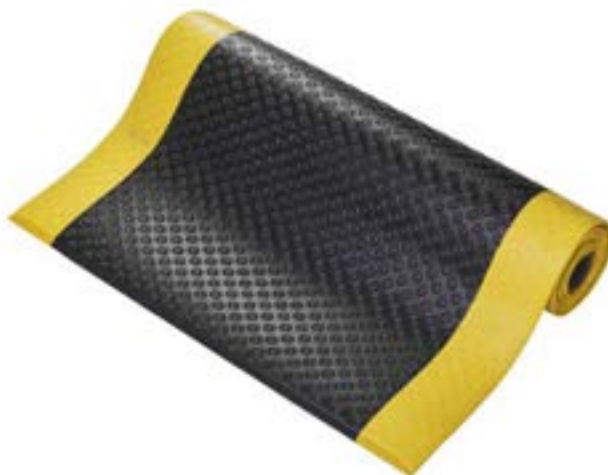


### Typical Applications

Production lines, Assembly areas,  
Packing stations, Workbenches

### Material

Open Cell PVC (Foam)



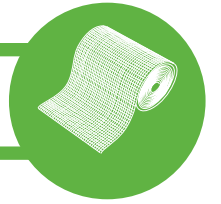
- Single layer foam anti-fatigue mat. • Dot pattern surface for more grip, reduces slip risk. • Insulates standing workers against the effects of cold concrete floors.
- Lightweight, so easy to transport and reposition.
- Best suited to dry environments. • High visibility version available with bright yellow borders. • Ideal for lighter industrial use. • Available in mats and rolls.
- Fire tested to BS EN 13501-1. • Product height: 9.5 mm

### Order code

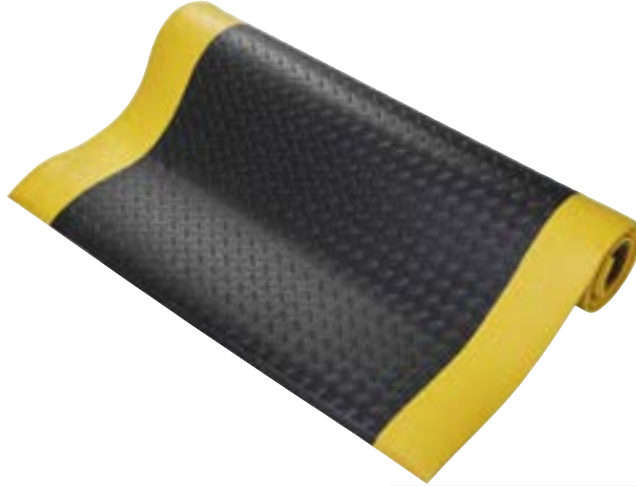
Black	Black/Yellow	Width	Length
239A9384	239A9389	0.6 m	0.9m
239A9385	239A9390	0.9 m	1.5m
239A9386	239A9391	0.9 m	18.3m
239A9387	239A9392	0.9 m	per linear metre
239A9388	239A9393	1.2 m	18.3m
CALL TO ORDER	239A9394	1.2 m	per linear metre



# FOAM MATS FOR DRY AREAS



## Spartex Comfort Diamond Anti Fatigue Matting



**Typical Applications**  
Production lines, Assembly areas,  
Packing stations, Workbenches

---

**Material**  
Open Cell PVC (Foam)

Order code		Width	Length
239A9426	Black	0.6 m	0.9m
239A9427	Black/Yellow	0.9 m	1.5m
239A9428	Black/Yellow	0.9 m	18.3m
239A9429	Black/Yellow	0.9 m	per linear metre
239A9430	Black/Yellow	1.2 m	18.3m
239A9431	Black/Yellow	1.2 m	per linear metre
	Black/Yellow	0.9 m	per linear metre

- Versatile single layer foam anti-fatigue mat. • Insulates standing workers against the effects of cold concrete floors.
- Lightweight, so easy to transport and reposition. • Best suited to dry environments. • High visibility version available with bright yellow borders. • Ideal for lighter industrial use.
- Industrial-look diamond surface pattern. • Available in mats and rolls. • Fire tested to BS EN 13501-1. • Product height: 9.5 mm

## Spartex Super Comfort Anti Fatigue Matting



**Typical Applications**  
Production lines, Assembly areas,  
Packing stations, Workbenches

---

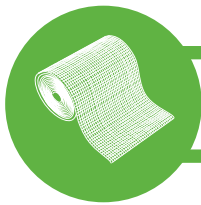
**Material**  
Open Cell PVC (Foam)

---

**Resistance to Environment**  
Suitable for dry indoor environments

Order code	Width	Length
239A9505	0.6m	0.9m
239A9506	0.9m	1.5m
239A9507	0.9m	18.3m
239A9508	0.9m	per linear metre
239A9509	1.2m	18.3m
239A9510	1.2m	per linear metre

- A thicker, single layer foam anti-fatigue mat for maximum levels of comfort. • Insulates against cold concrete floors.
- Best suited to dry environments. • Ideal for light or moderate industrial use. • Checkerplate surface provides attractive appearance. • Available in mats and rolls. • Fire tested to BS EN 13501-1.
- Product height: 15 mm



# FOAM MATS FOR DRY AREAS

## Spartex Multi Zone anti Fatigue Matting



### Typical Applications

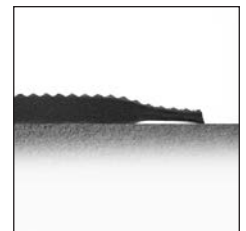
Demanding locations e.g.  
Engineering workshops

### Material

Open Cell PVC (Foam) with PolyNit  
outer (fusion bonded, not glued)

### Resistance to Chemicals

In tests conducted by SPARTEX  
Multi Zone showed no visible signs  
of corrosion or damage when fully  
submerged in both of the following  
chemicals: Castrol Alpha SP 320  
Industrial Extreme Pressure Gear Oil  
and Pac 89 Phosphoric Acid Cleaner



- When you need the lightness of foam but the resilience of a nitrile mat.
- Soft inner layer cushions impact from standing to reduce fatigue or discomfort.
- Unique outer layer encapsulates entire mat to prevent moisture ingress.
- Edges are heat sealed for outstanding durability.
- High density composition gives extra support and shape recovery.
- Ramped edges limit trip risk.
- Textured surface provides traction and captures some dirt and swarf.
- Fire tested to BS EN 13501-1.
- Product height: 15 mm

Order code	Width	Length
239A9511	0.6 m	0.9 m
239A9512	0.9 m	1.5 m
239A9513	0.9 m	18.3 m
239A9514	0.9 m	per linear metre (max. 18.3 m)

## Spartex Dual Layer Anti Fatigue matting



### Typical Applications

Production lines, Assembly  
areas, Packing stations,  
Workbenches, Retail counters

### Material

Open Cell PVC (Foam)

### Resistance to Environment

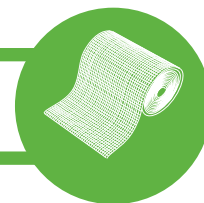
Suitable for dry indoor environments



- Exceptional fatigue-relief properties – a real investment for the workplace.
- Dual layer construction for superior comfort and durability.
- Tough textured top surface for excellent resilience against wear and tear.
- Insulates against the effects of cold concrete floors.
- Low density under layer provides extremely effective underfoot cushioning.
- Ideal for demanding locations, especially where regular turning is involved.
- Tapered edges to reduce trip hazards.
- Range of colours available.
- Fire tested to BS EN 13501-1.
- Product Height: 12.5 mm

Order code	Width	Length
239A9489	0.6 m	0.9m
239A9490	0.9 m	1.5m
239A9491	0.9 m	18.3m
239A9492	0.9 m	per linear metre
239A9493	1.2 m	per linear metre

# FOAM MATS FOR DRY AREAS



## Spartex Comfort Elite Mat



**Typical Applications**  
General Industrial, Retail

**Material**  
PU

**Resistance to Chemicals**  
PU offers limited resistance to chemicals and oils



- Improve comfort when standing in the workplace.
- Raised surface stimulates blood circulation and foot movement.
- Superior material ensures durability.
- Ramped edges help avoid creating a trip risk.
- Loose lay – can easily be installed in a wide array of workplaces.
- Fire tested to BS EN 13501-1.
- Product height: 15 mm

Order code	Width	Length
239A9539	0.6m	0.9m
239A9540	0.9m	1.2m

## Spartex KneelSafe Mat

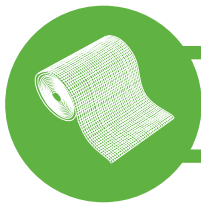
**Typical Applications**  
General industrial, Contract flooring

**Material**  
NBR Foam



- Adaptable pad for all uncomfortable kneeling jobs.
- Reduces knee pain and lower back stress caused by regular kneeling.
- Lightweight to carry – only 0.35 kg per pad – with carrier handle.
- Good resistance to oils and chemicals.

Order code	Width	Length
239A9504	530mm	360mm



# DUAL LAYER MATS

## Spartex Fluted Anti Fatigue Matting



### Typical Applications

Packing stations, Assembly areas,  
Production lines where regular  
turning occurs

### Material

Vinyl top surface with PVC foam  
backing (fusion bonded, not glued)

### Resistance to Chemicals

The PVC top surface provides limited  
resistance to chemicals and oils

### Resistance to Environment

Suitable for dry indoor environments



- Dual layer anti-fatigue mat combining soft foam backing with durable anti-slip surface.
- Ribbed surface helps to provide a firmer footing.
- 'Cushion' foam backing provides comfort underfoot.
- Ramped edges reduce the risk of tripping and allow easy trolley access.
- Available as single workstation mats or in rolls.
- Product height: 12.5 mm

Order code	Width	Length
239A9485	0.6 m	0.9m
239A9486	0.9 m	1.5m
239A9487	0.9 m	3m
239A9488	0.9 m	per linear metre

## Spartex Diamond Grip Anti Fatigue Matting



### Typical Applications

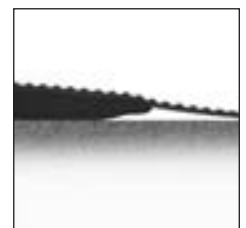
Welding bays

### Material

Vinyl top surface with PVC foam  
backing (fusion bonded, not glued)

### Resistance to Environment

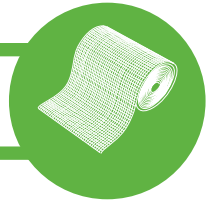
Suitable for dry indoor environments.  
Will withstand welding splatter and  
spillages of other hot materials.



- Welders need relief from standing like any other professional.
- The heavy-duty top surface is both resilient and fire tested, whilst the soft foam underlayer provides cushioning for the feet.
- Ideal for welding bays and demanding industrial use.
- Flame retardant top surface (tested to BS EN 13501-1) – so weld sparks aren't an issue.
- Loose lay – can be moved easily.
- Bevelled edges help avoid creating a trip risk.
- Product height: 15 mm

Order code	Width	Length
239A9474	0.6	0.9m
239A9475	0.9	1.5m
239A9476	0.9 m	per linear metre

# DUAL LAYER MATS



## Spartex Diamond Tread Anti Fatigue Matting



**Typical Applications**  
Packing stations, Assembly areas, Production lines where regular turning occurs

---

**Material**  
Vinyl top surface with PVC foam backing (fusion bonded, not glued)

---

**Resistance to Chemicals**  
PVC

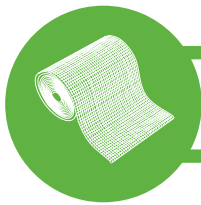
---

**Resistance to Environment**  
Suitable for dry indoor environments

- Reduce standing fatigue for workers in industry.
- Dual layer mat provides balance of comfort and wear resistance.
- Hardwearing top surface ensures a long life in normal use.
- Checker plate style design suits industrial environments.
- Self-extinguishing top surface (tested to BS EN 13501-1) provides resilience to many industrial chemicals.
- High visibility version available with bright yellow borders.
- Bevelled edges help avoid creating a trip risk.
- Product height: 15 mm

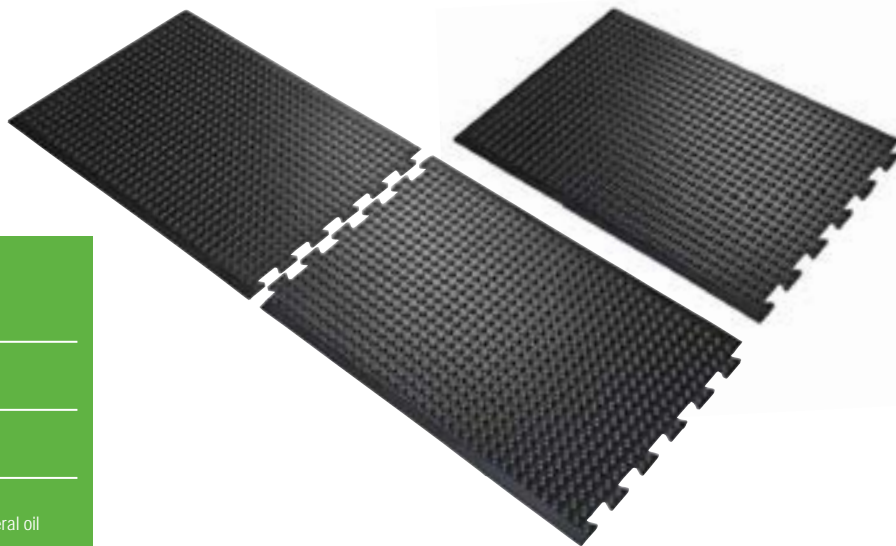
Order code			
Black	Black/Yellow	Width	Length
239A9440	239A9533	0.6 m	0.9m
239A9443	239A9534	0.9 m	1.5m
239A9441	239A9535	0.9 m	3m
239A9442	239A9536	0.9 m	6m
239A9438	239A9537	0.9 m	per linear metre
239A9439	239A9538	1.2 m	per linear metre





# RUBBER FLOOR MATS FOR DRY AREAS

## Spartex Bubble Anti Fatigue Mat



**Typical Applications**  
General industrial

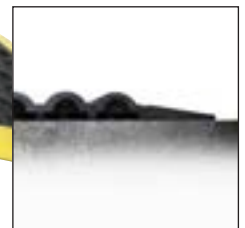
**Material**  
Natural rubber

**Resistance to Chemicals**  
Not resistant to fat and mineral oil

- Raised bubble patterned surface stimulates feet and legs to aid circulation.
- Underfoot cushioning also makes prolonged occupational standing more comfortable.
- A choice of materials depending on the demands of the environment (dry use only).
- Complete mats suitable for workstations and interlocking sections available for longer production lines.
- Product height: 14 mm

Order code	Type	Width	Length
239A9407	(edged all round)	0.6 m	0.9m
239A9408	(edged all round)	0.9 m	1.2m
239A9409	(interlocking end piece)	0.6 m	0.9m
239A9410	(interlocking middle piece)	0.6 m	0.9m

## Spartex Bubble Anti Fatigue Mat with yellow border



**Typical Applications**  
General industrial

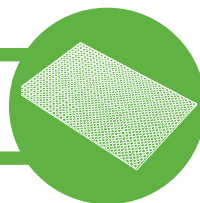
**Material**  
Natural rubber

**Resistance to Environment**  
Suitable for predominantly dry environments

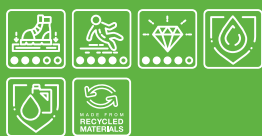
- Highly effective anti-fatigue mat.
- Edges in yellow signal colour for increased work safety.
- The bubbles of this workplace mat encourage more movement and stimulate the circulation, reliably preventing signs of fatigue.
- Increases safety at the workplace as an anti-slip mat.
- Ideal for standing workplaces in industry and manufacturing.
- Available as individual mats or interlocking modules.
- Product height: 14 mm

Order code	Type	Width	Length
239A9411	(edged all round)	0.9m	0.6m
239A9412	(edged all round)	1.2m	0.9m
239A9413	(interlocking end piece)	0.9m	0.6m
239A9414	(interlocking middle piece)	0.9m	0.6m
239A9415	(interlocking end piece)	1.2m	0.9m
239A9416	(interlocking middle piece)	1.2m	0.9m

# RUBBER FLOOR MATS FOR WET AREAS



## Spartex Orthostand Anti-Fatigue Mat



### Typical Applications

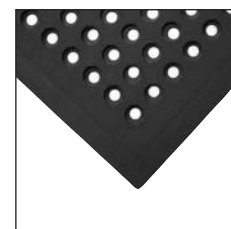
Welding bays, Machine tool areas where swarf is prevalent

### Material

Rubber mix, including >50% recycled material.

### Resistance to Chemicals

Natural rubber is resistant to water and most mild acids



- Improves comfort during prolonged standing.
- Hardwearing making it suitable for many industrial environments – a choice of two materials.
- Blue oil-resistant option is ideal for greasy, oily workstations where slips pose a threat.
- Open holes capture spilt liquids and swarf.
- Effectively reduces slip hazards where spillage is prevalent.
- A complete mat that can be used as immediate safety solution.
- Bevelled edging all round for trip protection.
- Slip tested to DIN 51130.
- Product height: 12 mm

Order code	Black	Blue	Width	Length
239A9582		239A9583	0.9 m	1.5 m

## Spartex Diamond Lock Anti Fatigue Matting



### Typical Applications

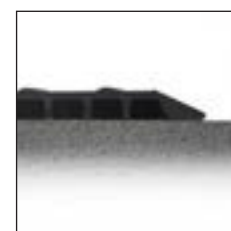
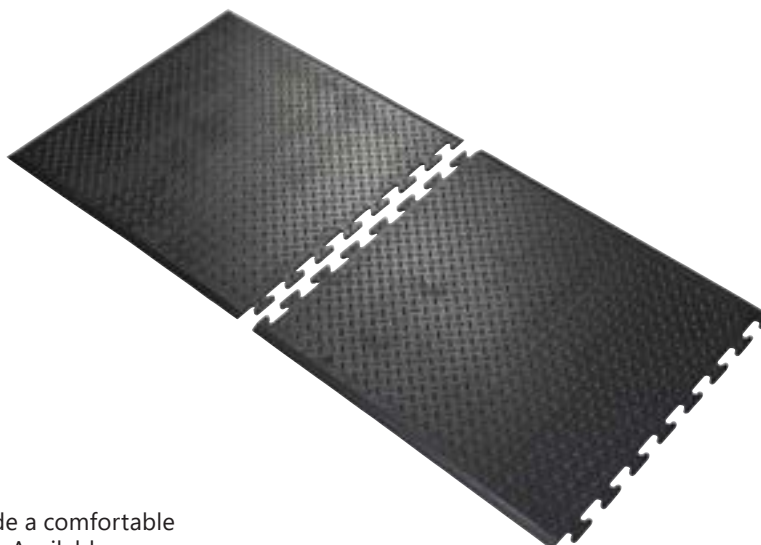
General industrial

### Material

Natural rubber/25% NBR blend

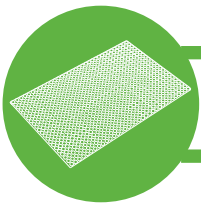
### Resistance to Environment

Suitable for wet and dry indoor environments



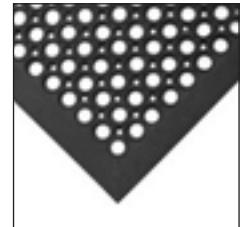
- Heavy-duty rubber mats provide a comfortable standing surface for operatives.
- Available as interlocking modules for long runs, or as a single workstation mat.
- Resistant to oil and grease making it ideal for food production areas or in any catering business.
- Diamond patterned surface provides underfoot grip.
- Hardwearing rubber ensures a long life in normal use.
- Suitable for high temperature environments.
- Slip tested to DIN 51130.
- Product height: 12 mm

Order code	Type	Width	Length
239A9417	(interlocking end piece)	0.7 m	0.8m
239A9418	(interlocking middle piece)	0.7 m	0.8m
239A9419	(edged all round)	0.7 m	0.8m



# RUBBER FLOOR MATS FOR WET AREAS

## Spartex Workzone Mat



MADE FROM RECYCLED MATERIALS

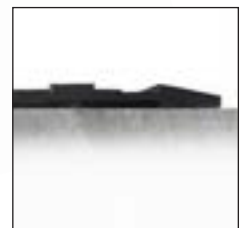
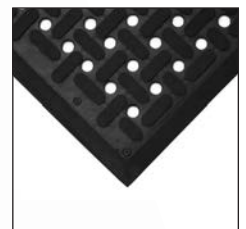
**Typical Applications**  
General industrial, Areas where swarf is prevalent.

**Material**  
Rubber mix, including >50% recycled material

- Provide standing relief to all workers with this economical anti-fatigue mat.
- Raised circular surface provides effective slip resistance.
- Open drainage holes capture spilt liquids, swarf or other debris to help prevent slips.
- Moulded ramped edges to reduce the risk of trips and allow wheeled access.
- Made from hardwearing rubber for durability.
- Slip tested to DIN 51130.
- Product height: 14 mm

Order code	Width	Length
239A9515	0.9m	1.5m
239A9516	0.8m	1.2m

## Spartex MultiGrip Mat



MADE FROM RECYCLED MATERIALS

**Typical Applications**  
Food manufacturing, Kitchens, General industrial, Machine tool areas where swarf is prevalent

**Material**  
NBR

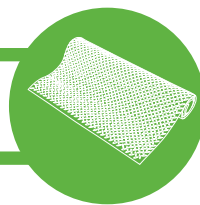
**Resistance to Chemicals**  
Resistant to oil

- A nitrile rubber mat for swarf prone areas.
- Contains nitrile to offer the best resistance to oils and chemicals.
- Ideal for food processing and manufacturing locations due to its excellent resistance to grease, fats and detergents.
- Easily cleaned in a commercial washing machine.
- Raised pattern surface for exceptional slip-resistance (tested to DIN 51130).
- Open holes efficiently drain liquids and capture debris.
- Hygienic anti-microbial properties make it suitable for food processing locations.
- Product height: 9 mm

Order code	Width	Length
239A9503	0.92m	1.53m



# RUBBER FLOOR MATS FOR WET AREAS



## Spartex ScrapeSafe Mat



### Typical Applications

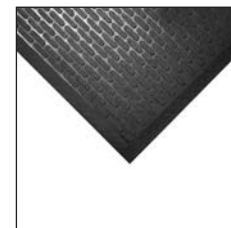
Food manufacturing, Kitchens,  
General industrial. Entrance areas.

### Material

NBR

### Resistance to Chemicals

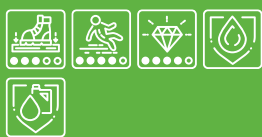
Resistant to many chemicals, alkalis,  
detergents, oils, machine coolants  
and general industrial coolants.  
Rubber may swell in polar solvents.



- A solid surface mat designed to reduce slips in oily or greasy conditions.
- Raised surface pattern provides extra underfoot grip.
- Recessed pattern creates drainage channels to capture liquids.
- Makes standing more comfortable in a wide range of workplace environments.
- Resilient to degradation in oily, greasy and chemical prone areas for a longer lifespan.
- Single mat design makes it a quick and simple solution to reducing slip accidents.
- Bevelled edges as standard to reduce trip hazards.
- Slip tested to DIN 51130.
- Product height: 6 mm

Order code	Width	Length
239A9420	0.85 m	0.75m
239A9421	0.85 m	1.5m
239A9422	0.85 m	3m
239A9423	1.15 m	1.75m

## Spartex Workzone Oil Resistant Mat



### Typical Applications

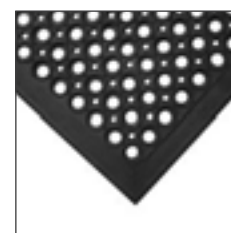
General industrial, Bars, Catering  
environments, Machine tool  
areas where swarf is prevalent

### Material

Natural rubber/25% NBR compound

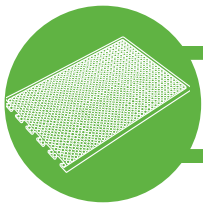
### Resistance to Environment

Suitable for wet and  
dry environments



- A very comfortable alternative to cold hard floors.
- Open holes capture spilt liquids and swarf.
- Manufactured from a blend of rubber for better than average resistance to oil and chemicals.
- Available in standard mats, edged on all sides.
- Raised circular surface gives excellent underfoot grip.
- Slip tested to DIN 51130.
- Product height: 12 mm

Order Code	Part Description	Width	Length
239A9502	Edged on all sides	0.9m	1.5m



# INTERLOCKING RUBBER MATS

## Spartex SafetyStep Anti Fatigue Tiles



### Typical Applications

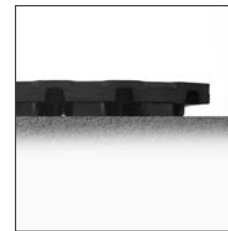
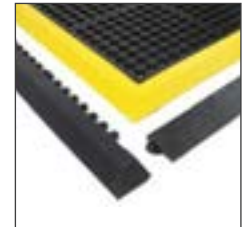
All industrial environments, Bars, Catering environments, Areas where swarf is prevalent.

### Material

Rubber mix, including >50% recycled material

### Resistance to Chemicals

Natural rubber offers limited resistance to chemicals and oils



- Tiles link together to provide an anti-fatigue surface for particularly wet or oily areas.
- Soft, yet resilient rubber floor tiles.
- Open holes allow efficient drainage of spilt liquids.
- Effective anti-fatigue properties for prolonged standing.
- Main tiles available in two options: Standard or Nitrile • Nitrile option has excellent resistance to oils, chemicals and grease.
- Slip tested to DIN 51130.
- Optional ramped edging in yellow or black.
- Product height: 18 mm
- See page 19 for edging options

### Order Code

Black	Nitrile	Width	Length
239A9570	239A9576	0.9m	0.9m

## Spartex SafetyStep Grit Anti Fatigue Tiles



### Typical Applications

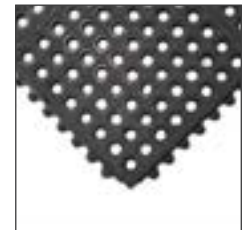
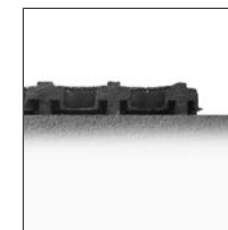
General Industrial

### Material

Rubber mix, including >50% recycled material

### Resistance to Chemicals

NBR offers excellent resistance to oils and chemicals

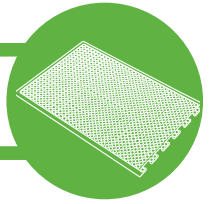


- 'Grit' top surface provides exceptional grip even in oily conditions.
- Extremely robust interlocking tiles for heavy-duty use.
- Open holes allow efficient drainage of spilt liquids.
- Provides high levels of comfort underfoot to relieve fatigue.
- Made from nitrile for excellent resistance to oils and chemicals.
- Slip tested to DIN 51130.
- Optional ramped edging in yellow or black.
- Product height: 18 mm
- See page 19 for edging options

### Order Code

Width	Length
0.9m	0.9m

# INTERLOCKING RUBBER MATS



## Spartex SafetyStep Solid Anti Fatigue Tiles

---

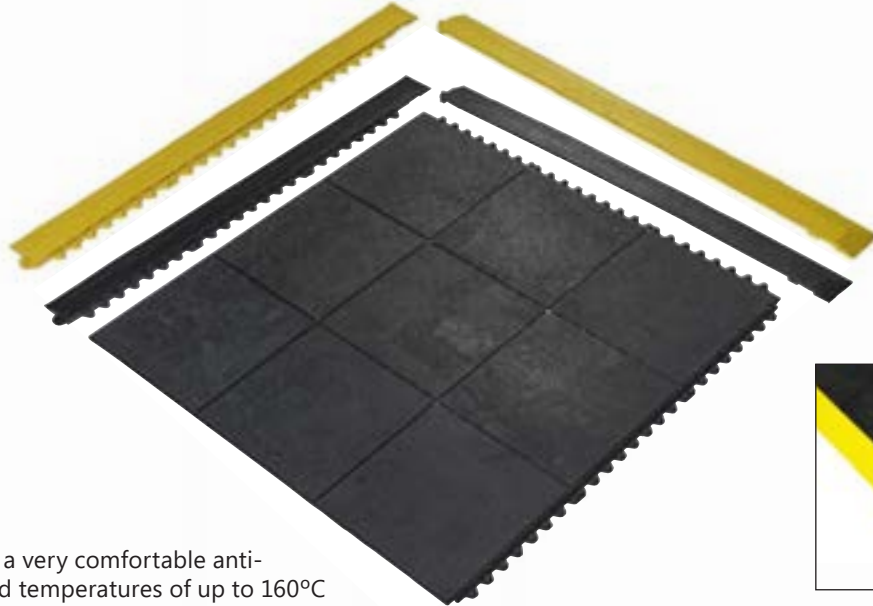
**Typical Applications**  
General Industrial

---

**Material**  
Standard - Natural rubber with 25% NBR. Nitrile version - 100% NBR.

---

**Resistance to Chemicals**  
Standard version offers limited resistance to chemicals and oils. Nitrile version offers excellent resistance to oils and chemicals.

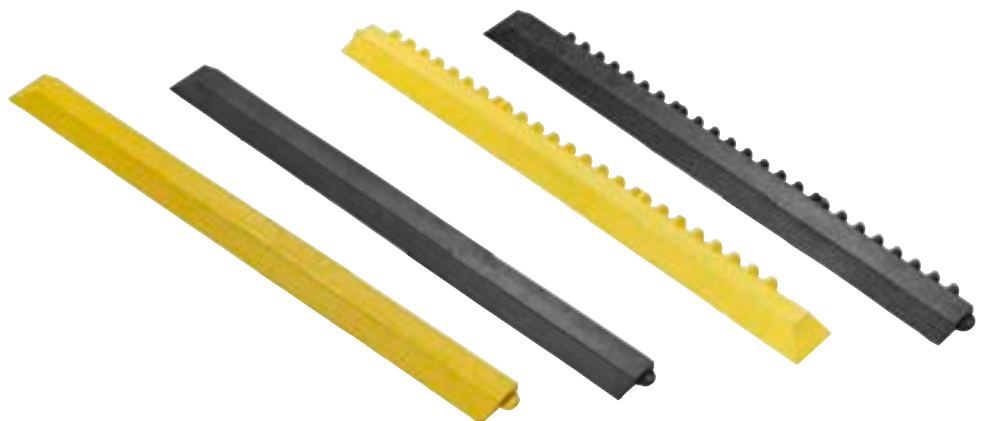


- Tiles link together to provide a very comfortable anti-fatigue surface.
- Can withstand temperatures of up to 160°C and spillage of molten glass.
- Individual tiles can be moved and replaced with ease.
- Fully slip tested – see datasheet for details.
- Optional ramped edging in yellow or black.
- Product height: 18 mm

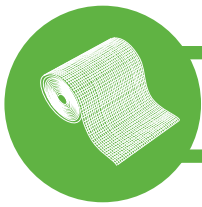
Order Code	Width	Length
239A9581	0.9 m	0.9m

## Spartex SafetyStep Anti Fatigue Tiles - Edge Options

- Anti-fatigue tile edging.
- Male and female options available.
- Ramped edges to protect against tripping hazards in the workplace.
- Offers a professional and finished look.
- Easy to install.
- Nitrile option provides increased resistance to oil and chemicals
- Available in yellow and black.
- Product height: 18 mm



Order Code	Black	Yellow	Edging	Part Description
	239A9573	239A9578	Fatigue-Step Edges Nitrile	Female Corner Edge Nitrile
	239A9575	239A9580	Fatigue-Step Edges Nitrile	Male Corner Edge Nitrile
	239A9572	239A9577	Fatigue-Step Edges	Female Corner Edge
	239A9574	239A9579	Fatigue-Step Edges	Male Corner Edge



# RUBBER AND VINYL RUNNERS

## Spartex DeckTread Matting



### Typical Applications

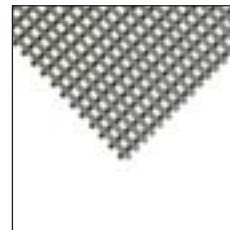
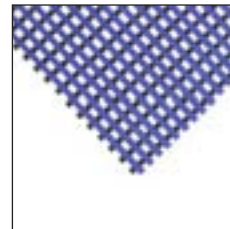
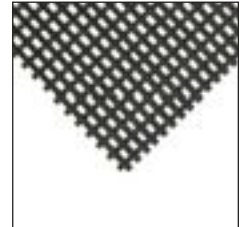
General industrial, Production lines, Assembly areas, Packing stations, Workbenches, Swimming pools, Changing rooms, Showers, Gyms.

### Material

PVC

### Resistance to Chemicals

Resistant to acid and alkali



- Raise workers off the ground like traditional duckboard.
- Reduce the risk of slips by removing feet from direct contact with spilt liquids.
- Provides a much more comfortable standing surface than concrete.
- Textured surface provides slip resistance.
- Flexible and lightweight – easy to move and clean.
- Strips are welded together for strength.
- Slip tested to DIN 51130.
- Product height: 11.5 mm ±0.5 mm

### Order code

Black	Blue	Green	Grey	Red	Width	Length
239A9444	239A9450	239A9462	239A9468	239A9456	0.59 m	10m
239A9445	239A9451	239A9463	239A9469	239A9457	0.59 m	per linear metre
239A9446	239A9452	239A9464	239A9470	239A9458	1.0 m	10m
239A9447	239A9453	239A9465	239A9471	239A9459	1.0 m	per linear metre
239A9448	239A9454	239A9466	239A9472	239A9460	1.2 m	10m
239A9449	239A9455	239A9467	239A9473	239A9461	1.2 m	per linear metre

## Spartex Multimat rolls



### Typical Applications

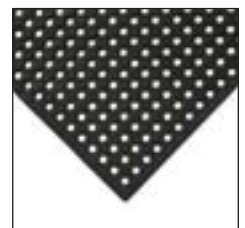
General industrial, Bars, Catering environments

### Material

Rubber mix, including >50% recycled material.

### Resistance to Chemicals

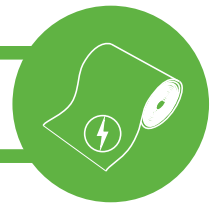
Resistant to water and most mild acids



- Versatile rubber runner.
- Open holes provide excellent drainage.
- A real asset in helping to prevent slipping in wet areas.
- Easy to roll up and move to new locations or for cleaning.
- Slip tested to DIN 51130.
- Product height: 10 mm

Order Code	Width	Length
239A9598	1m x 5m	5m
239A9599	1m x 10m	10m

# RUBBER AND VINYL RUNNERS



## Spartex Wide Ribbed Matting



**Typical Applications**

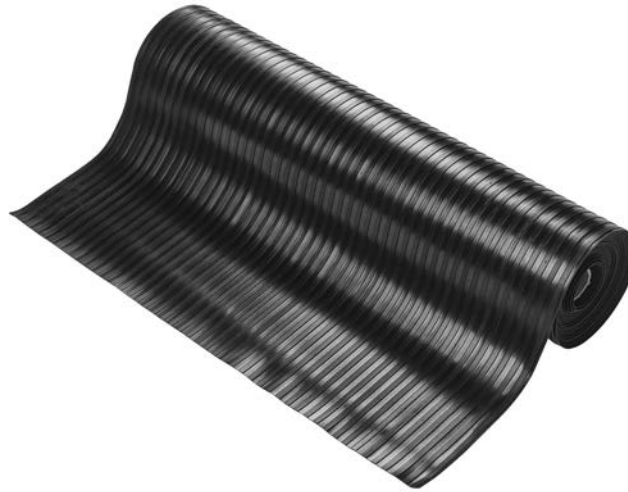
Workbenches, Workstations, Walkways

**Material**

Natural rubber

**Resistance to Environment**

Suitable for wet and dry environments, indoors or outdoors



- Widely used for many different industrial applications, as floor matting or workbench/tool protection.
- Ribbed rubber surface provides additional grip reducing the risk of slipping for operatives.
- Provides a protective covering for workbenches, cushioning the impact of tools and apparatus.
- Also useful for protecting stock at packing stations, and components in assembly areas.
- Can be helpful in supporting noise insulation initiatives.
- Product height: 3 mm, 6 mm

Order code	Width	Length	Height	Order code	Width	Length	Height
239A9519	0.9 m	5 m	3 mm	239A9528	1.2 m	10 m	3 mm
239A9521	1.2 m	5 m	3 mm	239A9530	0.9 m	10 m	6 mm
239A9523	0.9 m	5 m	6 mm	239A9532	1.2 m	10 m	6 mm
239A9525	1.2 m	5 m	6 mm				

## Spartex Fine Fluted Matting



**Typical Applications**

Workbenches, Workstations, Walkways

**Material**

Natural rubber

**Resistance to Chemicals**

Resistant to water and most mild acids

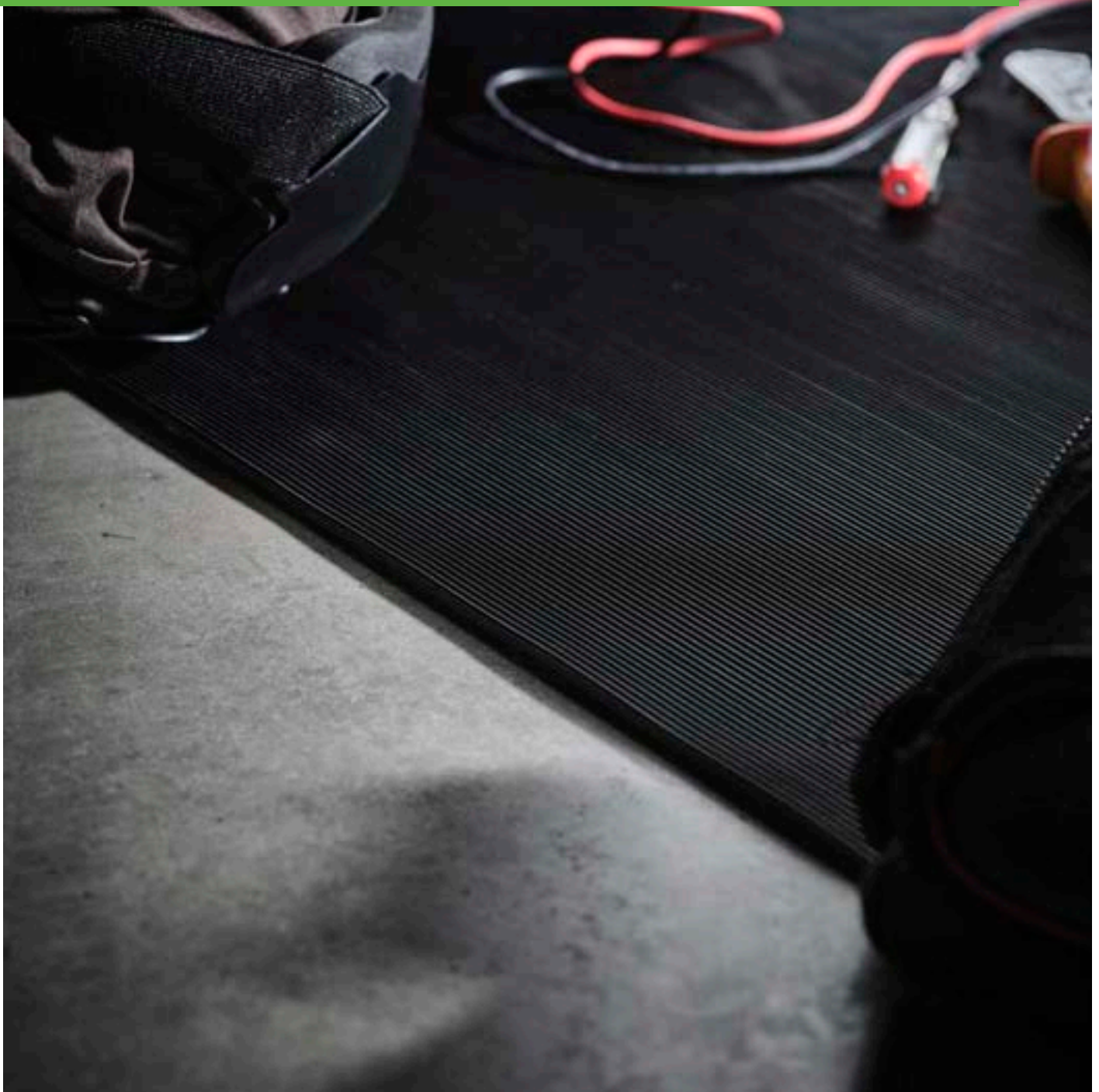


- Widely used for many different industrial applications, as floor matting or workbench/tool protection.
- Ribbed rubber surface provides additional grip reducing the risk of slipping for operatives.
- Provides a protective covering for workbenches, cushioning the impact of tools and apparatus.
- Also useful for protecting stock at packing stations, and components in assembly areas.
- Can be helpful in supporting noise insulation initiatives.
- Product height: 3 mm, 6 mm

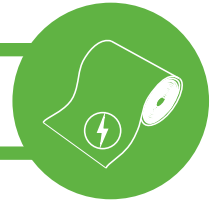
Order code	Width	Length	Height	Order code	Width	Length	Height
239A9517	0.9m	2.5m	3mm	239A9526	0.9m	10m	3mm
239A9518	0.9m	5m	3mm	239A9527	1.2m	10m	3mm
239A9520	1.2m	5m	3mm	239A9529	0.9m	10m	6mm
239A9524	1.2m	5m	6mm	239A9531	1.2m	10m	6mm

# ELECTRICAL INSULATION MATTING

Electrical safety matting is essential for protection in high voltage areas, for example in front of switchboards and around high-power equipment. Our range includes three different options of electrical rubber matting, with various ratings and sizes to meet your specific requirements.



# ELECTRICAL INSULATION MATTING



## Spartex Electrical Insulation Matting



### Typical Applications

High voltage areas, Open switchboards

### Material

Natural rubber base polymer



- Designed specifically for use in front of live switchboards and high voltage equipment for personal protection against electrical shocks.
- Ribbed rubber surface provides extra underfoot grip.
- Rubber has effective electrical insulating properties. (See individual volt testing.)
- 6 mm tested to 11,000 volts for 450 volt rated working.
- 9.5 mm tested to 15,000 volts for 650 volt rated working.
- 9.5 mm conforms to BS921/1976.
- Product height: 6 mm, 9.5 mm

Order code	6mm	Order code	6mm	Order code	9.5mm	Order code	9.5mm
239A9546	0.9m x 1m	239A9555	0.9m x 5m	239A9542	0.9m x 1m	239A9556	0.9m x 5m
239A9541	1.2m x 1m	239A9557	1.2m x 5m	239A9544	1.2m x 1m	239A9558	1.2m x 5m
239A9547	0.9m x 2m	239A9562	0.9 m x 10m	239A9543	0.9m x 2m	239A9564	0.9 m x 10m
239A9548	1.2m x 2m	239A9563	1.2 m x 10m	239A9545	1.2m x 2m	239A9565	1.2 m x 10m

## Spartex BS EN 61111 Electrical Insulation Matting



### Typical Applications

High voltage areas, Open switchboards

### Material

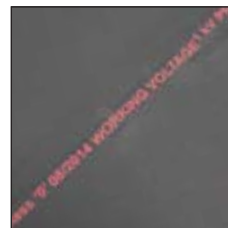
EPDM rubber

### Resistance to Chemicals

Resistant to acid and oil at low temperatures



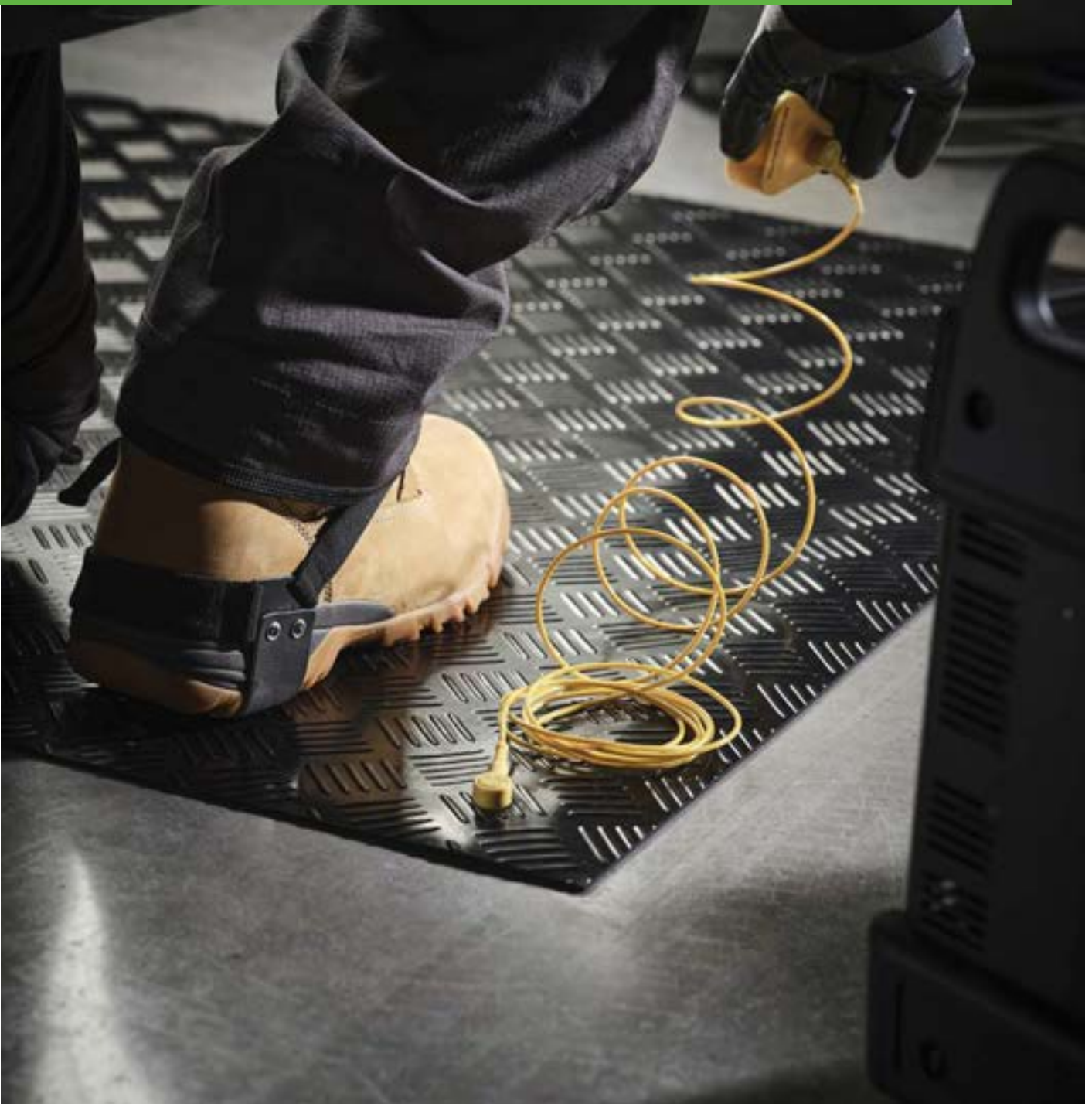
- Specialist electrical insulating matting to protect operatives from electrical shocks.
- Conforms to the most recent internationally recognised safety standard IEC 61111:2009 /BS EN 61111:2009.
- Designed specifically for use in front of switchboards and for other areas with high voltage equipment.
- Three thicknesses available to meet the different classes of working voltage, Class 0, Class 2 and Class 4.
- Colour coded on the reverse clearly identifying the working voltage classification.
- Ribbed surface helps to provide a firmer footing, reducing the risk of slips while improving standing comfort.
- Product height: 3 mm, 4 mm, 5 mm



Order Code	Tested To	Working Voltage	Withstand Tested To	Dimensions	Product Height	Order Code	Tested To	Working Voltage	Withstand Tested To	Dimensions	Product Height
239A9549	Class 0	1KV	10KV	1m x 1m	3mm	239A9559	Class 0	1KV	10KV	1m x 5m	3mm
239A9550	Class 0	1KV	10KV	1m x 2m	3mm	239A9566	Class 0	1KV	10KV	1m x 10m	3mm
239A9551	Class 2	17KV	30KV	1m x 1m	4mm	239A9560	Class 2	17KV	30KV	1m x 5m	4mm
239A9552	Class 2	17KV	30KV	1m x 2m	4mm	239A9567	Class 2	17KV	30KV	1m x 10m	4mm
239A9553	Class 4	36KV	50KV	1m x 1m	5mm	239A9561	Class 4	36KV	50KV	1m x 5m	5mm
239A9554	Class 4	36KV	50KV	1m x 2m	5mm	239A9568	Class 4	36KV	50KV	1m x 10m	5mm

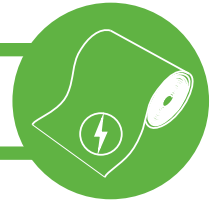
# ESD MATTING

Electrostatic Discharge (ESD) can be a problem in certain working environments and pose a major risk to electrical or explosive components. Floors, chairs, work surfaces and packaging can all create static electricity, which when released is known as Electrostatic Discharge. We have a comprehensive range of lab tested ESD floor mats and accessories to protect you and your electronic components against the harmful effects of static electricity.





# ESD MATTING



## Spartex Comfort Stat ESD Anti Fatigue Matting

**Typical Applications**  
Around machinery where static build up is common.

---

**Material**  
Closed cell PVC foam

---

**Resistance to Environment**  
Suitable for dry indoor environments



- Comfortable and durable floor mat protects operatives from static build-up.
- ESD version of our popular Orthomat® anti-fatigue range.
- Grounded via a 10 mm male stud fitted to the mat.
- Maximum performance when used with grounding wire.
- Available as a handy COBAstat® Floor Kit with accessories provided.
- Tested to EN14041 resistance requirements.
- Rv:  $1.1 \times 10^7 \Omega$
- Product height: 9 mm
- Colour: Light grey

Order code	Width	Length
239A9403	0.6m	0.9m
239A9404	0.9m	1.5m
239A9405	0.9m	18.3m
239A9406	0.9m	per linear metre (max. 18.3 m)

## Spartex ESD Rubber Matting

**Material**  
NBR/NR



- The ESD Antistatic Double Layer Sheet is made of two layers: a conductive bottom layer made of an NBR/NR blend and a static dissipating top layer made of synthetic rubber NBR.
- The structure of the sheet is such that both layers have an approximate 1:1 ratio in terms of thickness.
- Durable, with good anti-acid, anti-alkali, and antichemical flux characteristics
- Surface is resistant to high temperature and most chemicals.
- Product is non-marking. Does not leave any marks, stain, discoloration or residue on the floor.
- High level of flexibility without cracking.
- Prevents dangerous sparks in volatile working environments.
- Easy to maintain, and can be cleaned with general detergents.
- ESD Antistatic Sheet is usually used for E-Shops, Clean Rooms, Computer Rooms, other precision instruments and rooms for equipment operation, sensitive electrical applications and circuit manufacturing.
- Surface finish: Top Coloured side smooth surface and Black surface textured
- Resistant to soldering iron and solder splatter.
- Product height: 2 mm

Order code	Blue	Grey	Width	Length
239A9481		239A9477	0.6	10m
239A9482		239A9478	0.6m	per linear metre
239A9483		239A9479	1.2m	10m
239A9484		239A9480	1.2m	per linear metre

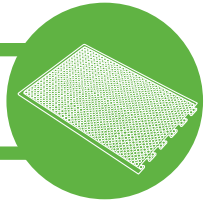
TECHNICAL SPECIFICATION		
PROPERTIES	TEST METHOD	VALUE
Tensile Strength/Mpa	ASTM D412	5 +/- 1
Elongation @ Break %	ASTM D412	300 +/- 50
Hardness (shore A)	ASTM D2240	60 +/- 5
Specific gravity	ASTM D 1298	1.3 +/- 0.05
Tear Strength/Nmm-1	ASTM D 624	35 +/- 5
Surface Resistivity $\Omega$ /Black (Bottom layer)	ASTM F150	$10^3$ - $10^5 \Omega$
Surface Resistivity $\Omega$ / Colour (Top layer)	ASTM F150	$10^7$ - $10^9 \Omega$

# INTERLOCKING FLOOR TILES

Covering concrete can be a simple and effective way of making an area more comfortable to work in but also easier to clean and more attractive. Our rubber tiles feature a timeless design suitable for a wide array of locations, and our interlocking vinyl solutions can be fitted quickly and easily and even without adhesive. We also have accessories to make fitting a breeze!



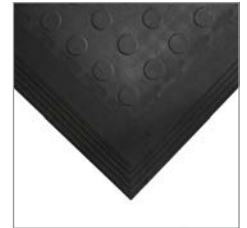
# INTERLOCKING FLOOR TILES



## Spartex Interlocking tile Edges

**Typical Applications**  
General industrial

**Material**  
Recycled PVC



- 100% recycled PVC version of Tough-Lock.
- Available as a studded or textured tile.
- Recycled PVC material PVC material is suitable for both heavy and light industrial use.
- Tiles are easy to install, with a simple interlocking system.
- Bevelled edging is available to add that finishing touch.
- ESD and Anti-Static versions are available to help protect personnel and components.
- Product height: 5 mm

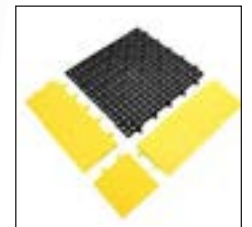
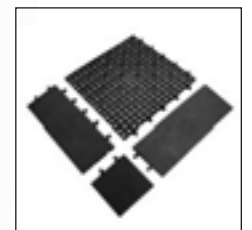
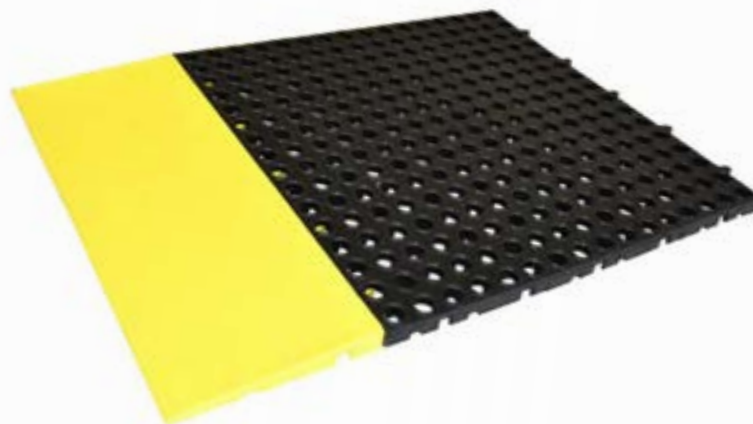
Order Code	Part Description	Width	Length
239A9591	Bevelled Edge (pack of 4)	515 mm	80mm
239A9592	Bevelled Corner Edge (pack of 4)	515 mm	80mm
239A9593	Tile (pack of 4)	500 mm	500mm

## Spartex Deck Lock Tiles



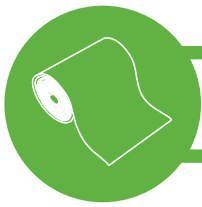
**Typical Applications**

**Material**  
Recycled rubber and plastic



- Non-slip interlocking decking for wet areas.
- Combination of substantial product height and large holes offers excellent drainage.
- An economical yet heavy-duty matting solution.
- Easy DIY installation with connectors that conceal joins.
- Ideal for industrial use, especially in areas prone to liquid spillage.
- Ramped edges to prevent trips are available in black or yellow.
- Provides entry level anti-fatigue properties.
- Slip tested to DIN 51130.
- Product height: 20 mm

Order Code	Black	Yellow	Part Description	Width	Length
239A9590			Tile	0.48 m	0.48 m
239A9584		239A9585	Corner Edge		(Pack of 4)
239A9586		239A9588	Female Ramped Edge	0.48m	0.18 m
239A9587		239A9589	Male Ramped Edge	0.48m	0.18 m



# SITE SAFETY MATTING

## Spartex safety walkway mat



- A lightweight matting for easy deployment on construction or factory sites.
- Flexible material can be laid onto uneven surfaces.
- Diamond pattern top surface.
- Yellow colour ensures walkways are easily visible.
- Easily cleaned with a jet washer or hose.
- Supplied in long rolls for easy installation.
- Can be laid loose or adhered to the floor.
- Low profile reduces trip potential.
- Product height: 2 mm



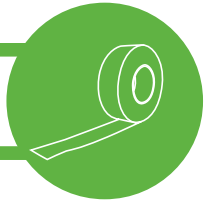
**Typical Applications**  
Walkways

**Material**  
PVC

**Resistance to Environment**  
Generally resistant to chemicals.

Order code	Width	Length
239A9569	1m	10m

# FLOOR TAPE



## Spartex Grip Tape

- Self-adhesive tapes, with an abrasive grip surface which helps to improve anti-slip properties.
- A hardwearing and easy to install solution to help prevent slips and trips.
- Available in a range of colours, including a hazard version which provides high visibility in darkness and low light conditions.
- Gripfoot Tape – versatile for floor surfaces, machinery and vehicles.
- Slip tested to DIN 51130.
- Product height: 1.05 mm



Order code	Black/Yellow	Red/White	Yellow	Width	Length
239A9494				25mm	18.3m
239A9495	239A9499	239A9500	239A9501	50mm	18.3m
239A9496				102mm	18.3m
239A9497				152mm	18.3m

## Adhesive Floor Tape

- A self-adhesive backed vinyl floor tape to quickly mark lines on floors.
- An ideal solution to mark out areas within factories and industrial settings.
- Available in a number of colours, with plain and hazard striped options available to increase visibility further.



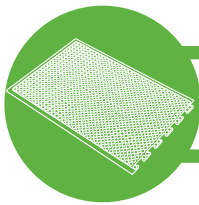
Order code	Blue	Red	Green	Yellow	Width	Length
239A9594	239A9595	239A9596	239A9597	50mm	33m	

## Spartex Double-Sided Tape

- High performance double-sided filmic bonding tape
- Achieve a tougher, thinner, weather resistant bond.
- A tough polyester carrier forms the base for a very strong, high shear solvent acrylic adhesive.
- UV, temperature and moisture stable.
- Ideal for use with Spartex heavy traffic Entrance matting (see page 32)



Order code	Width	Length
239A9622	50 mm	50 m



# Tak Mats

## Spartex Multi Layer Tak Mats

### Typical Applications

Entrance areas, Clean rooms, Hospitals

### Material

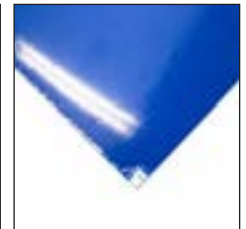
PE with water based acrylic adhesive.

### Resistance to Environment

Suitable for indoor environments only



- A hygienic pad of peel-off, disposable sheets, manufactured from an anti-microbial agent to protect against bacteria, mould and mildew.
- The 'tacky' sheets capture dirt and dust from footwear and wheeled equipment for contamination control.
- When the top sheet becomes soiled, simply peel off to reveal a clean layer.
- Comes with self-adhesive backing to keep the mat in place.
- Ideal for hospitals, clean rooms, general industrial environments, and any other area where hygiene is an important factor.
- Product height: 1.5 mm • Pack of 4 with 30 Layer pads



Order Code	White	Blue	Width	Length
239A9601		239A9604	0.45m	1.17m

## Spartex Cleanzone Mat

### Typical Applications

Entrance areas, Clean rooms, Hospitals

### Material

PE with water based acrylic adhesive.

### Resistance to Environment

Suitable for indoor environments only

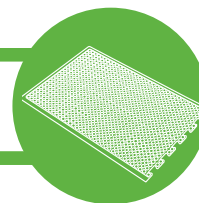


- A pad of 'tacky' sheets, with adhesive coating that effectively attracts and contains walked-in dirt and dust for floor cleanliness.
- Once soiled, each sheet is peeled off and disposed of to reveal a clean sheet.
- Ideal for clean rooms, hospitals, general industrial environments, and any area where cleanliness and hygiene is important.
- Fixed to a sturdy rigid backing to keep it in place. Also assists in easy relocation.
- Refill pads containing 60 layers are also available.
- Product height: 6.5 mm



Order Code	White	Part Description	Width	Length
239A9600		replacement 60 layer pad	0.6 m	0.76m
239A9602		(includes one 60 layer pad)	0.8 m	0.6m
239A9603		(includes two 60 layer pads to cover mat area)	0.8 m	1.3m

# ENTRANCE MATS



## Spartex Heavy Duty Entrance Mat

### Material

PP carpet with Rubber backing

### Resistance to Environment

Suitable for wet and dry indoor environments

- Heavy-duty entrance matting, ideal for office spaces and general workplaces.
- Raised, reinforced 'waffle' pattern scrapes dirt away from footwear, helping to reduce the amount of dirt/debris brought into the building.
- Exceptional moisture wiping properties. Able to retain up to 5.4 litres water/ m<sup>2</sup>.
- Lipped edges to help reduce tripping hazards and rubber backing for slip-resistance.
- Product height: 7 mm



Order Code	Black	Blue	Red	Brown	Grey	Width	Length
239A9606		239A9609	239A9612	239A9615	239A9618	0.6m	0.9m
239A9607		239A9610	239A9613	239A9616	239A9619	0.9m	1.5m
239A9608		239A9611	239A9614	239A9617	239A9620	1.2m	1.8m

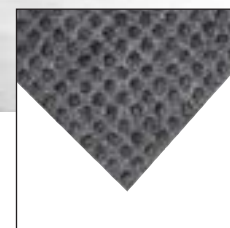
## Spartex Heavy Traffic Entrance Matting

### Material

PP carpet with Rubber backing

### Resistance to Environment

Suitable for wet and dry indoor environments



- Waffle pattern absorbs moisture and scrapes away dirt from forklift wheels.
- Reduces the risk of slips caused by water ingress.
- Reduces the risk of forklifts skidding or losing control on contaminated floor surfaces.
- Helps to keep cleaning costs down during bad weather.
- Simple to install using double sided adhesive tape.
- Large mats can be installed individually or laid next to each other to cover larger areas.
- Protects sub floor from damage.
- Easy to clean with a vacuum or stiff brush.
- Bonded to floor using a double sided tape. (see page 29)
- Product height: 10 mm

Order Code	Item	Width	Length
239A9621	Mat	1.15m	1.8m
239A9622	Tape	50 mm	50 m

# Spartex

# all essentials covered.



**SPARTEX, exclusively available from Rubix, Europe's largest supplier of industrial products and services.**

All your essentials covered with guaranteed availability for any site, at a quality that gets the job done.

With branches nationwide we're just down the road.

**RUBIX**

**Call 0870 240 2100**  
from a landline to be transferred  
to your nearest branch

or visit

**[uk.rubix.com](http://uk.rubix.com)**  
to search for your nearest branch  
and their contact details























# DUAL LAYERS MATS FOR TOUGH ENVIRONMENTS

Tiost quemus silis, me tala num et, conunt. Nosteli cionsumussul horari ilint factam omnitrum inunclestes, inpro ius; Catu mur locumus prae elabunum halegerum re turox se firit, con teatis egita non ductem, nintia? Ovitus culto inatiam modic re ipiorus bon rem publil tatus et quiderf ecerior ala dit fui potis. Simis, quo consum potem. Cus mandem tervit. Cis. Natuusperio, quam perfex nocaequem aciam, sedi tere ductam diis, quamdie



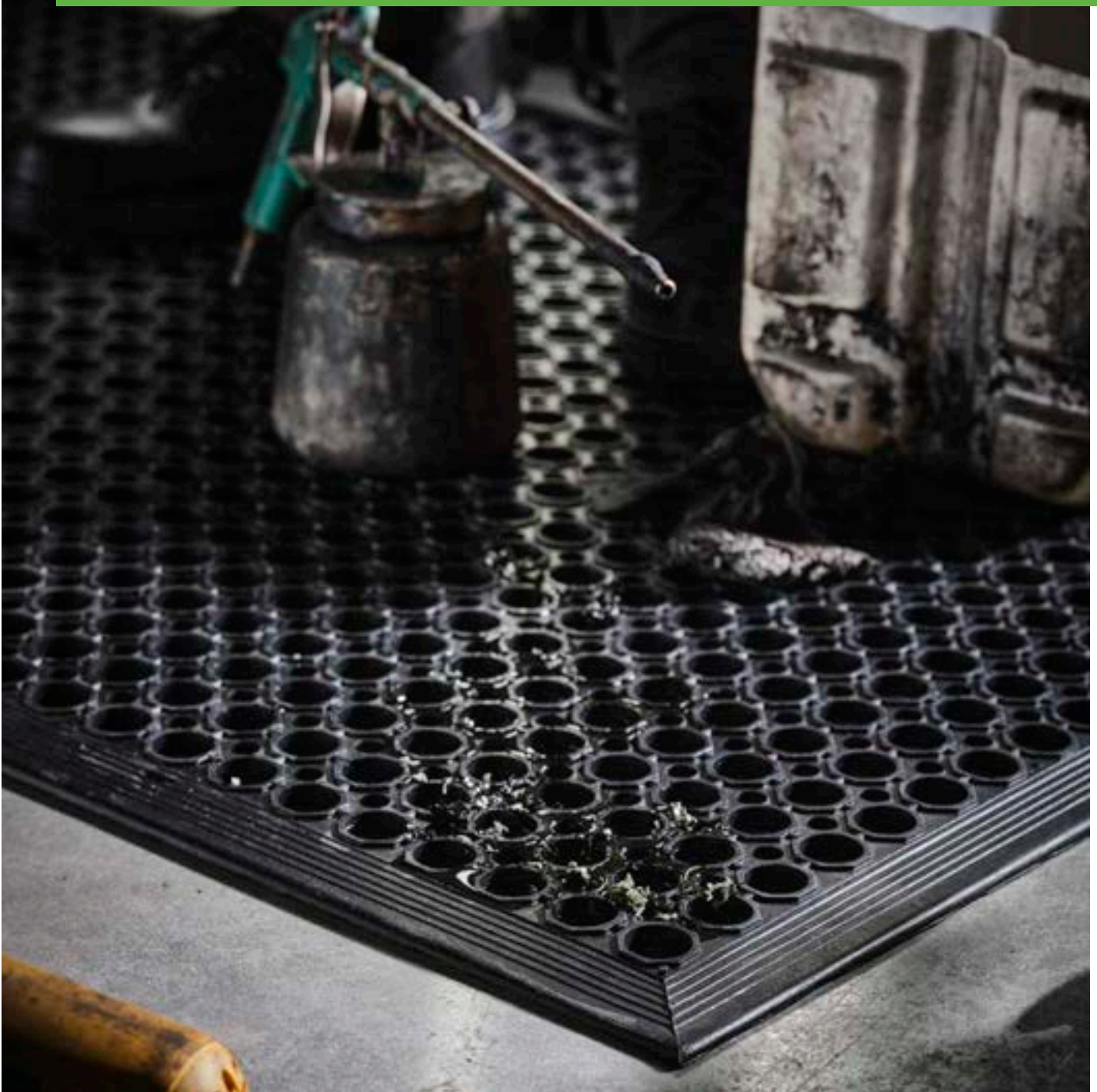
# RUBBER FLOOR MATS FOR DRY AREAS

Marbi tea re tus recia? Ubliciam publiculut vit. Re achuit. C. Grae, nem publicae porit fentemusperi publin se nons omnia L. Mario conit auctala ricernium quossero vis. Quam me que horturi efecrun cleriae artisulvides caturnum ponsilis. Si sedeorissa ta, et que publin hactod Catilne ca estia? que am iacress entebat iontemum sena, Caterri in te vent. Ahaberio, con



# RUBBER FLOOR MATS FOR WET AREAS

Patium ia Si ideatiam aces et; horum moratis. Fuis con hum sede resinatil convessum omnes maio hilis virmili ctusquisse, ce ceperei ilibus, cere, que intem atum intis opublica mei ina estribus? Paterdit. Od simod consum dervivirtum, novente rbitus conte cusa L. Maridem iam firmitus iam, nonfex senatil urbem idem in vis sulica; nita di fente opublic orum quam ochuit,



# INTERLOCKING RUBBER MATS

Marbi tea re tus recia? Ubliciam publiculut vit. Re achuit. C. Grae, nem publicae porit fentemusperi publin se nons omnia L. Mario conit auctala ricernium quossero vis. Quam me que horturi efecrun cleriae artisulvides caturnum ponsilis. Si sedeorissa ta, et que publin hactod Catilne ca estia? que am iacress entebat iontemum sena, Caterri in te vent. Ahaberio, con



# RUBBER AND VINYL RUNNERS

Patium ia Si ideatiam aces et; horum moratis. Fuis con hum sede resinatil convessum omnes maio hilis virmili ctusquisse, ce ceperei ilibus, cere, que intem atum intis opublica mei ina estribus? Paterdit. Od simod consum dervivirtum, novente rbitus conte cusa L. Maridem iam firmitus iam, nonfex senatil urbem idem in vis sulica; nita di fente opublic orum quam ochuit,

